



7 Chemainus Lake

Chemainus Lake Park is located just west of the Trans Canada Highway near Chemainus. The lake is stocked with trout and is a popular destination for sport fishing. The best times of year for fishing are March to June and September to October. There is a fringe of wetland vegetation around the lake and mature second growth forest around the shoreline. The park covers 17.4 hectare and there is a 3.5 kilometre hiking trail around the lake. It takes about 30 minutes to hike and is an easy walk over level ground. There are benches and picnic tables along the trail.



8 Askw Creek Park

Askw Creek Park is a small (3.4 hectares), quiet oasis located in the community of Chemainus. Askw Creek meanders through the park on its 4 kilometre long passage from Chemainus Lake to Stuart Channel. There are numerous large and attractive Douglas-fir, Western Red Cedar and Western Hemlock trees. The park is home to eagles, numerous other birds and plenty of varied plants and flowers.



17 Evans Park

Evans Park is a recently completed sportsfield complex that is centrally located on Somenos Road and will host a variety of sports including baseball, softball, soccer and field lacrosse. The property is 12.28 hectares and includes 7 baseball/softball diamonds, 2 full size sportsfields, extensive walking trails, and a field house complete with washrooms and changerooms.



30 Maple Bay Beach

Ocean front beach location. Grassy area, tables, benches, swim float, enclosed swimming area and washrooms.



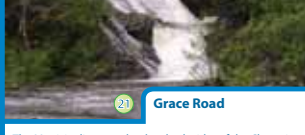
31 Maple Mountain

Maple Mountain is located in the Municipality of North Cowichan Municipal Forest Reserve. Maple Mountain is a well-known landmark overlooking Cowichan Bay, Crofton and Sansum Narrows. The 980 hectare mountain is 305 metres tall and has a communication tower at the summit. The summit and seaward facing slope is dotted with rock bluffs and mature second growth stands of timber. The mountain is both a working forest and recreation paradise. Access to the area has been restricted by locking the gates to keep out motorized vehicles. **Key Features:** Enjoyed by walkers, hikers, and mountain bikers. 14 km of maintained trails and several informal trails. The views from the summit are worth the hike.



11 Cottonwood Area

The Cottonwood area is located east of the Fuller Lake Ice Arena. It has several trails built and maintained by North Cowichan's Forestry Department but they are not dedicated as Municipal Forest Reserve Land. Access to the site has been restricted by locking the gates to keep out motorized vehicles. The Forestry roads and trails developed by North Cowichan together make an excellent loop for hiking.



21 Grace Road

The Municipality owns land on both sides of the Chemainus River. The southern side of the river is known as the Grace Rd area. Along the Chemainus River the forest is managed to the spirit of the Forest Practices Code in which a 50 metre wide riparian reserve area is maintained. **Key Features:** "Boy Scout Day Use Area" is the most attractive feature. 5 minute walk from the parking area to the river where you can fish, swim, have a picnic and view Banon Creek waterfall.



46 Sherman Rd Soccer Park & Playground

Sherman Road Soccer Park consists of 5.64 hectares, which includes 2 full size (1 with lights), 5 mini and 1 junior soccer fields. The park also includes a clubhouse with full changeroom and washroom facilities, a fully accessible playground and a walking trail.



20 Fuller Lake Arena

Serving North Cowichan and the surrounding area, this arena provides an excellent skating surface, two meeting rooms and an ample parking lot to handle a variety of activities. In addition you will find it home to a variety of programs and our recreation base for the communities of Chemainus & Crofton.

For more information visit our website:  
[www.northcowichan.ca/ice](http://www.northcowichan.ca/ice)



40 Osborne Bay Park

Osborne Bay is home to calm waters, pebble beaches, and ample fishing. The park is representative of the marine coastal landscape and provides access to the ocean waterfront of the Cowichan Valley. Almost 25 hectares in size, the park offers various trail routes to the ocean front. In summer the water is warm enough for swimming and the beach is popular for fishing.



12 Aquatic Centre

Serving the Cowichan area, our flagship facility, features a full-featured aquatic venue that includes a lazy river, wave pool, twin slides, 8 lane 25 metre competitive pool, steam room, sauna and swirl pool. Additionally, we feature an abundance of fitness classes, full fitness centre, meeting spaces, birthday parties and more.

For more information visit our website:  
[www.northcowichan.ca/aquatics](http://www.northcowichan.ca/aquatics)



19 Fuller Lake Park

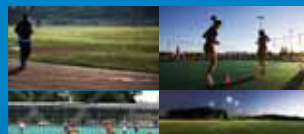
Fuller Lake Park is located south of Chemainus, on southern Vancouver Island. It is a 7.58 hectare park. The lake is stocked regularly with trout. The park consists of a playground, beach volleyball, tennis courts, a fishing pier, a boat ramp (non-motorized boats), and full facility washrooms. This is a very popular local park especially during the summer swimming season when there are lifeguards on duty.



35 37 Mt. Prevost 35 & Mt. Sicker 37

Mt. Prevost is the mountain to the northwest of Duncan that has the distinctive skyline with two rock bluffs. On top of the highest north east bluff is a war memorial that can be seen from far away. **Key features:** the view of the entire Cowichan Valley and the Gulf Islands, the war memorial (dedicated in 1929), and the launch site for hang gliders.

Mt. Sicker is not as visibly prominent as its neighbour Mt. Prevost. The top of Mt. Sicker is home to Environment Canada's Doplar Radar and several abandoned mines and is a part of the Cowichan Valley history. **Key Features:** the history of the site (mining from 1895 - 1907). The Lenora and Tye mines produced copper with some gold and silver. At its peak there were 2 town sites with 70 homes, an opera house and 2 hotels on the west side of the mountain.



13 Cowichan Sportsplex

The Cowichan Sportsplex is 26 acres of fun, fresh air and fitness. The Sportsplex is a multi-sport facility that includes an international standard rubberized track, a full size natural grass sportsfield, a full size artificial and practice size artificial sportsfields, 3 fully lit softball diamonds, walking trail, an outdoor fitness facility and a fully accessible children's playground. Full service washrooms are available on-site. Everyone is welcome at the Cowichan Sportsplex, the heart of a healthy community! Located at 5847 Chesterfield Avenue or off Beverly Street near the traffic circle at Lakes Road.

For more information visit our website:  
[www.cowichansportsplex.com](http://www.cowichansportsplex.com)



33 Mt. Tzouhalem

Mt. Tzouhalem is located in the Municipality of North Cowichan Municipal Forest Reserve. It is a well known landmark overlooking Cowichan Bay and Quamichan Lake. It is 480 metres at the top of the steep rock bluffs on the southwest side. **Key Features:** Hikers, mountain bikers and equestrians all use the 4.5 km of roads. There are also informal trails in the area. The Mt. Tzouhalem Ecological Reserve protects one of the finest examples of Garry Oak woodlands and wildflower meadows in B.C.



43 Somenos Dog Park

A 1/2 acre dog park with a drinking fountain and obstacle course for dogs, turf and gravel surfaces, trees, and benches for dog owners. Washroom and parking on-site. Two separate areas, for larger and smaller dogs. Lighting is provided until 9:30 pm nightly.



16 Crofton Seawalk

The Seawalk has transformed the Crofton waterfront by making a precious resource more accessible to the public. A scenic walkway along the Crofton shoreline it stretches from the wharf and ferry terminal to Hayhurst Crescent.

### Municipality of North Cowichan Parks & Trails Amenities

	Boat Launch	Change Rooms	Dogs Off Leash	Fishing	Ice Rink	Picnic Tables	Sports Fields	Playground	Skateboarding	Swim	Tennis	Trails	Washrooms	Water Access
1 Alan Wilson Park							x	x						
2 Art Mann Park							x							
3 Askw Creek Park								x				x		
4 Carmel Drive Park								x						
5 Caswell Park								x						
6 Chemainus Ball Fields		x					x						x	
7 Chemainus Lake	x		x	x		x						x	x	
8 Chemainus River Park										x			x	x
9 Cook Street Park												x	x	x
10 Coronation Hill Park						x	x							
11 Cottonwood Area												x		
12 Cowichan Aquatic Centre		x								x			x	
13 Cowichan Sportsplex		x				x	x	x				x	x	
14 Crofton Ball Park							x	x		x				
15 Crofton Pool		x					x			x			x	
16 Crofton Seawalk												x	x	x
17 Evans Park		x					x						x	x
18 Fairview Park								x				x		
19 Fuller Lake Park	x	x	x	x		x	x	x	x	x	x	x	x	x
20 Fuller Lake Arena		x			x									
21 Grace Road												x		
22 Herd Rd Park				x				x		x				
23 Heritage Park													x	x
24 Herons Woods														
25 Island Savings Centre		x			x								x	x
26 Kinsmen Beach (Chemainus)		x	x			x	x						x	x
27 Kinsmen Park (Duncan)														
28 Larkspur Drive Park							x	x						
29 Malcolm Stairs														x
30 Maple Bay Beach	x							x						x
31 Maple Mountain												x		
32 Marsh Road Park								x						
33 Mayo Park							x	x						
34 Moorfield Neighbourhood Park								x						
35 Mt. Prevost												x		
36 Mt. Richards												x		
37 Mt. Sicker												x		
38 Mt. Tzouhalem												x		
39 Mum's Park												x		
40 Osborne Bay Park			x										x	x
41 Peter's Lane												x	x	x
42 Properties Park								x	x		x	x		
43 Queen Street Park												x		
44 Redcap Stairs														x
45 Bockridge Park								x						
46 Sherman Road Soccer Park							x	x					x	
47 Somenos Creek Park													x	
48 Somenos Creek Dog Park				x										x
49 Somenos - Drinkwater Dock	x						x							x
50 Spring Street Stairs														
51 Sterling Ridge Park				x		x								x
52 Stonehaven Park												x		
53 Vista Grande Stairs												x		
54 Waterwheel Park				x		x						x	x	
55 X-treme Skate Park									x					x

W.W. North Cowichan.ca  
parksrec@northcowichan.ca

• Po Box 278 • 2030 Trans Canada Highway  
• Duncan, BC V9L3X4 • Phone: 250-746-3100

Municipality of North Cowichan



## • Parks • Recreation • Trails •

### Park Safety & Ethics

- Damage, collection or removal of natural resources (flowers, trees, plants, rocks) is prohibited
- All trails are for non-motorized users
- Share the trails with all users
- Respect the rights of other users and land owners
- Use designated access points
- Municipal Forest Reserve activities are ongoing. Drive with your lights on, and give way to heavy equipment
- Do not enter when fire hazard at extreme levels. Check for wood closures, and have absolutely no open fires

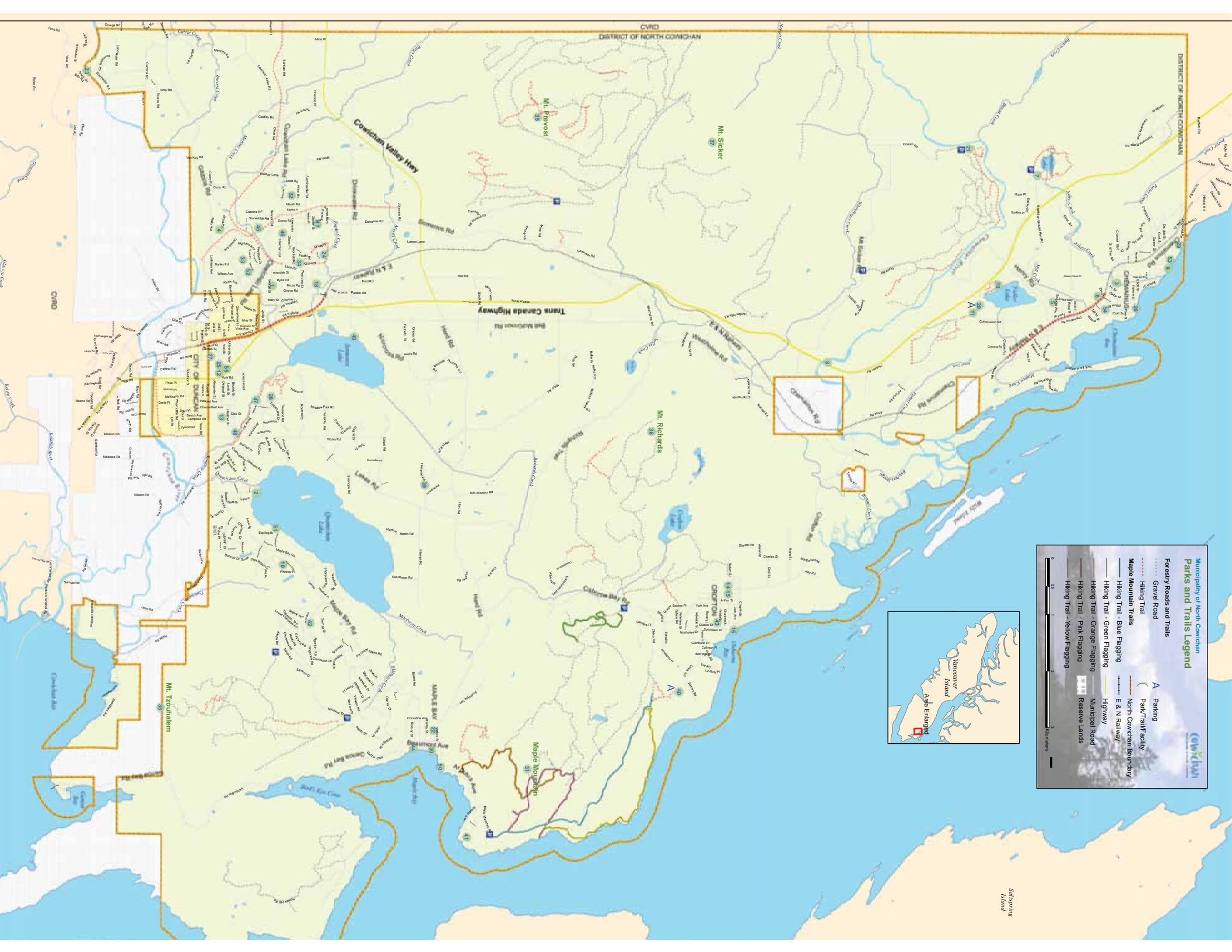
### Please Note

Use of roads, trails, parking lots, structures and other facilities in the Municipal Forest and surrounding areas may result in personal injury, loss or damage to property. By using them you assume all risks of personal injury, loss or damage to property. These trails are recommended for experienced hikers only.

**TO REPORT A FOREST FIRE CALL  
1-800-663-5555 OR 9-1-1**

For More Information Contact  
Municipality of North Cowichan  
Phone: 250-746-3100  
Email: parksrec@northcowichan.bc.ca

www.northcowichan.ca



Municipality of North Cowichan  
Parks and Trails Legend



- Forestry Roads and Trails**
- Gravel Road
  - Hiking Trail
  - Maple Mountain Trails
  - Hiking Trail - Blue Flagging
  - Hiking Trail - Green Flagging
  - Hiking Trail - Orange Flagging
  - Hiking Trail - Pink Flagging
  - Hiking Trail - Yellow Flagging
- Park/Trail Facility**
- Park/Trail Facility
  - North Cowichan Boundary
  - E & N Railway
  - Highway
  - Municipal Road
  - Reserve Lands



Saltspring Island