

NORTH HALF ZONING MAP

15
14
13
12
11
10
09
08

A B C D E F G H J K

The Corporation of the District of North Cowichan NORTH HALF ZONING MAP SCHEDULE "C" TO BYLAW 2950

Scale = 1 : 12,500

Produced by the North Cowichan Engineering Dept.
December 17, 1997

Disclaimer: The zoning information does not represent the official zoning. Contact the Planning Department to confirm zoning information. This map is provided for your convenience. It is intended for schematic representation only. The Municipality of North Cowichan assumes no responsibility for the accuracy of the information contained in this map.

Drawing File: Drawing File: 2024-07-19 - OFFICIAL WORKING COPY ZONING -BL2950.dwg

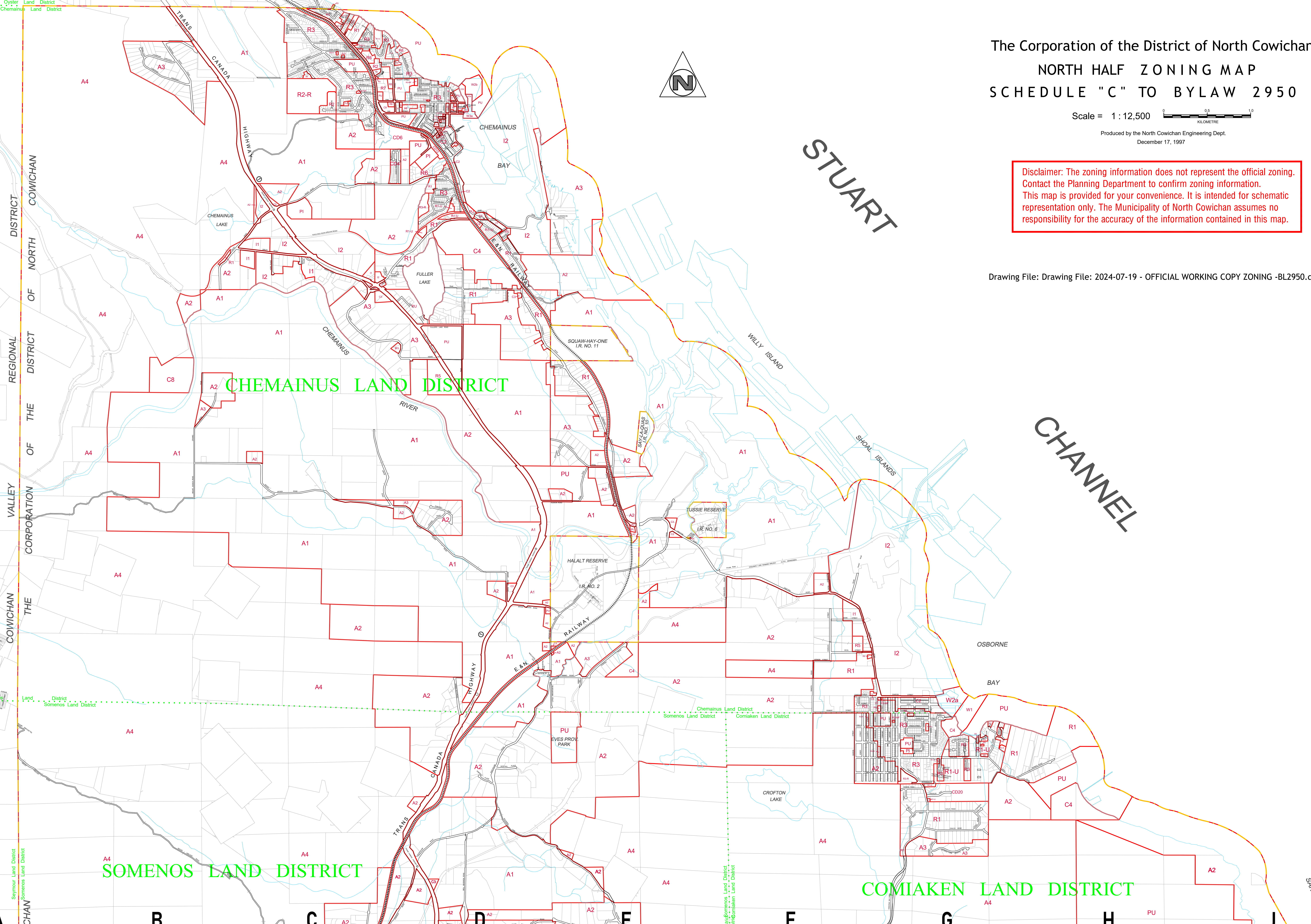
ZONING DESIGNATIONS

- A1 ... AGRICULTURAL
- A2 ... RURAL
- A3 ... RURAL RESTRICTED
- A4 ... RURAL RESOURCES
- A5 ... RURAL RESIDENTIAL
- A6 ... RURAL MARKET
- C1 ... COMMERCIAL LOCAL
- C2 ... COMMERCIAL GENERAL
- C3 ... COMMERCIAL SERVICE
- C4 ... COMMERCIAL RECREATION
- C5 ... COMMERCIAL PROFESSIONAL
- C6 ... COMMERCIAL RURAL HOSPITALITY
- C8 ... COMMERCIAL RURAL RECREATION
- CD ... COMMERCIAL CHEMAINUS
- CD1 ... COMPREHENSIVE DEVELOPMENT (The Drive)
- CD2 ... COMPREHENSIVE DEVELOPMENT (Chemainus Quay)
- CD4 ... COMPREHENSIVE DEVELOPMENT (Mixed Family)
- CD6 ... COMPREHENSIVE DEVELOPMENT (Asian Village)
- CD7 ... COMPREHENSIVE DEVELOPMENT (General)
- CD8 ... COMPREHENSIVE DEVELOPMENT (Made Bay School Site)
- CD9 ... COMPREHENSIVE DEVELOPMENT (Mixed Family)
- CD10 ... COMPREHENSIVE DEVELOPMENT (Urban Medium Density)
- CD11 ... COMPREHENSIVE DEVELOPMENT (Community Services, Health Care)
- CD12 ... COMPREHENSIVE DEVELOPMENT (Residential Two Family)
- CD13 ... COMP. DEV. (Grand Overlook Urban Residential)
- CD14 ... COMP. DEV. (University Village Multi-Fuse Residential)
- CD15 ... COMPREHENSIVE DEVELOPMENT (Mixed Use Residential)
- CD16 ... COMPREHENSIVE DEVELOPMENT (Mixed Use Commercial)
- CD17 ... COMPREHENSIVE DEVELOPMENT (Congregate Housing)
- CD18 ... COMPREHENSIVE DEVELOPMENT (The Commons)
- CD19 ... COMP. DEV. (University Village Mixed Commercial/Residential)
- CD20 ... COMPREHENSIVE DEVELOPMENT (The Commons)
- CD21 ... COMPREHENSIVE DEVELOPMENT (Marineport Quay)
- CD22 ... COMPREHENSIVE DEVELOPMENT (Prairie Road North)
- CD23 ... COMPREHENSIVE DEVELOPMENT (Prairie Road South)
- CD24 ... COMPREHENSIVE DEVELOPMENT (Prairie Road North)
- CD25 ... COMP. DEV. (Island Place Two Family Detached)
- CD26 ... COMP. DEV. (Island Place Multi-Family)
- I1 ... INDUSTRIAL LIGHT
- I2 ... INDUSTRIAL HEAVY
- MA1 ... MARINE UPLAND TOURIST COMMERCIAL
- MA2 ... MARINE UPLAND TOURIST COMMERCIAL / RESIDENTIAL
- PC ... PUBLIC CONSERVATION
- PU ... PUBLIC USE
- R1 ... RESIDENTIAL RURAL
- R2 ... URBAN RESIDENTIAL RURAL
- R3 ... RESIDENTIAL RESTRICTED
- R4 ... RESIDENTIAL ONE AND TWO FAMILY
- R5 ... RESIDENTIAL MEDIUM DENSITY MULTIFAMILY
- R6 ... RURAL RESIDENTIAL ONE AND TWO FAMILY
- R7 ... RESIDENTIAL SMALL LOT SINGLE FAMILY
- R8 ... RESIDENTIAL MOBILE HOME SUBDIVISION
- R9 ... RESIDENTIAL MOBILE HOME PARK
- R10 ... RESIDENTIAL TOWNHOUSE
- R11 ... RESIDENTIAL MULTIFAMILY THREE STOREY
- R1A ... RESIDENTIAL ORCHARD-ORIENTATED MULTIFAMILY
- R1B ... RESIDENTIAL MULTIFAMILY FOUR STOREY
- W1 ... WATER LOT PRIVATE RESIDENCE
- W2 ... WATER LOT LIGHT COMMERCIAL
- W3 ... WATER LOT MIXED USE COMMERCIAL

ZONING AMENDMENTS NORTH HALF MAP

AMENDMENT	BYLAW	DATE
1	1	1997
2	2	1998
3	3	1999
4	4	2000
5	5	2001
6	6	2002
7	7	2003
8	8	2004
9	9	2005
10	10	2006
11	11	2007
12	12	2008
13	13	2009
14	14	2010
15	15	2011
16	16	2012
17	17	2013
18	18	2014
19	19	2015
20	20	2016
21	21	2017
22	22	2018
23	23	2019
24	24	2020
25	25	2021
26	26	2022
27	27	2023
28	28	2024

MAP UPDATED-Cadastral/Zoning
July 19, 2024



CHEMAINUS LAND DISTRICT

SOMENOS LAND DISTRICT

COMIAKEN LAND DISTRICT