

October 15, 2020

File: 5610-55

Environmental Health Officer
Central Vancouver Island Health Region
1665 Grant Avenue
NANAIMO BC V9S 5K7

**Re: Crofton Water System Water Quality Report
Premises Number 1310822
Report for the Period Jan 1/19 to Dec 31/19**

Please find the Municipality of North Cowichan's Water quality report for the Crofton Water System attached.

Sincerely

Clay Reitsma, M. Eng., P. Eng
Senior Manager, Engineering

clay.reitsma@northcowichan.ca



1 Operator Information

Contact Name Clay Reitsma, M.Eng. , P.Eng.
Phone 250-746-3100
Email clay.reitsma@northcowichan.ca

2 System Description

This is a surface water supply. Water is pumped from the Cowichan River to Catalyst's water treatment plant. The water treatment plant consists of a coagulation and flocculation process, followed by sedimentation and filtration. The water is chlorinated at the water treatment plant and pumped to the Robert Street Reservoir where a small amount of additional chlorine is added to ensure adequate reduction of Giardia and Cryptosporidium cysts.

3 Compliance Criteria

In addition to Island Health's permit requirements show in Table 1 below, water samples are regularly analyzed through certified laboratories to ensure water quality meets BC Water Quality Guidelines.

Table 1: Compliance Criteria specified in Island Health Permit.

Parameter	Compliance Criteria	Sampling Criteria	Comments
Viruses (E.coli, Total Coliforms)	>= 4 Log Removal		
Cryptosporidium oocysts and Giardia Cysts	>= 3 Log Removal		
Escherichia Coli and Total Coliforms	None Detectable		
Distribution system Turbidity	<= 1.0 NTU		
Source Water Turbidity	< 0.9 NTU		
Residual Disinfectant (Free Chlorine)	> 0.2 mg/L	Weekly	Maintained throughout entire distribution system

4 Boil Advisories

4.1 Future Improvements

No future improvements are contemplated at this time.

5 Additional Comments

Should you have any questions regarding this report, please do not hesitate to contact the Municipality at (250) 746-3100.

Sincerely



Clay Reitsma, M.Eng., P.Eng.
Senior Manager, Engineering

cc: Robert Bell, Manager, Utilities
Brian Houle, Catalyst Paper

CR/cr

Enclosures

6 Results

See below for the results of various water quality parameters.

Report Name: Crofton Water Quality Report

Report Subtitle: Crofton Water Quality Report

January 2019	Robert St Cl2 (Analyzer Data)			Robert St Reservoir (Turb Meter Data)	Robert St Chlorinator
	Flow (Volumetric Rate) (m ³ /d)	Free Cl2 (Max Day) (mg/L)	Free Cl2 (Min Day) (mg/L)	Turbidity (Daily Avg) (NTU)	Turbidity (NTU)
1	541	0.93	0.91	0.12	
2	483	0.91	0.90	0.11	0.09
3	504	0.89	0.89	0.11	
4	504	0.90	0.89	0.12	
5	526	0.90	0.90	0.23	
6	500	0.91	0.90	0.44	
7	510	0.93	0.91	0.48	
8	479	0.94	0.92	0.36	
9	519	0.93	0.91	0.31	
10	520	0.91	0.87	0.28	
11	464	0.96	0.89	0.23	
12	567	1.01	0.97	0.18	
13	666	1.03	1.01	0.15	
14	735	1.05	1.04	0.10	
15	693	1.06	1.06	0.07	
16	845	1.07	1.06	0.05	
17	728	1.07	0.90	0.04	
18	542	0.90	0.90	0.04	
19	497	0.83	0.83	0.05	
20	622	0.80	0.80	0.06	
21	726	0.78	0.78	0.05	0.53
22	651	0.77	0.77	0.06	
23	565	0.88	0.76	0.09	
24	541	0.92	0.89	0.10	
25	533	0.95	0.93	0.10	
26	555	1.00	0.95	0.09	
27	539	1.12	1.01	0.07	
28	526	1.15	1.12	0.06	0.18
29	500	1.15	1.13	0.06	
30	495	1.13	1.13	0.11	
31	482	1.12	1.08	0.13	
Average	566	0.96	0.94	0.14	0.27
Minimum	464	0.77	0.76	0.04	0.09
Maximum	845	1.15	1.13	0.48	0.53
Count	31	31	31	31	3
Total	17,558				
95 Percentile				0.46	0.53
Exceedences	0	0	0	0	1
Median	533	0.93	0.91	0.10	0.18

February 2019	Robert St Cl2 (Analyzer Data)			Robert St Reservoir (Turb Meter Data)	Robert St Chlorinator
	Flow (Volumetric Rate) (m ³ /d)	Free Cl2 (Max Day) (mg/L)	Free Cl2 (Min Day) (mg/L)	Turbidity (Daily Avg) (NTU)	Turbidity (NTU)
1	528	1.08	1.07	0.11	
2	524	1.02	1.02	0.09	
3	517	1.02	1.00	0.06	
4	567	0.96	0.96	0.06	0.13
5	558	0.96	0.95	0.06	
6	528	0.95	0.95	0.07	
7	561	1.04	0.93	0.10	
8	520	1.02	1.01	0.10	
9	580	1.01	1.01	0.08	
10	527	0.97	0.97	0.08	
11	569	0.96	0.96	0.06	
12	574	0.95	0.95	0.05	
13	715	1.03	0.94	0.05	
14	721	1.04	1.03	0.15	
15	687	1.06	1.05	0.15	
16	852	1.01	1.01	0.15	
17	693	1.01	1.01	0.15	
18	739	1.01	1.01	0.15	
19	578	0.96	0.96	0.15	0.42
20	518	0.96	0.96	0.15	
21	508	0.94	0.94	0.15	
22	565	0.94	0.94	0.15	
23	551	0.94	0.93	0.15	
24	587	0.94	0.94	0.15	
25	558	0.94	0.94	0.15	0.16
26	506	0.94	0.93	0.15	
27	560	0.93	0.93	0.15	
28	528	0.94	0.93	0.15	

Average	586	0.98	0.97	0.12	0.24
Minimum	506	0.93	0.93	0.05	0.13
Maximum	852	1.08	1.07	0.15	0.42
Count	28	28	28	28	3
Total	16,419				
95 Percentile				0.15	0.42
Exceedences	0	0	0	0	0
Median	561	0.96	0.96	0.15	0.16

March 2019	Robert St Cl2 (Analyzer Data)			Robert St Reservoir (Turb Meter Data)	Robert St Chlorinator
	Flow (Volumetric Rate) (m ³ /d)	Free Cl2 (Max Day) (mg/L)	Free Cl2 (Min Day) (mg/L)	Turbidity (Daily Avg) (NTU)	Turbidity (NTU)
1	567	0.93	0.93	0.15	
2	557	0.92	0.92	0.15	
3	577	0.92	0.92	0.15	
4	571	0.92	0.81	0.22	
5	541	0.82	0.82	0.22	0.09
6	530	0.83	0.81	0.22	
7	551	0.94	0.84	0.22	
8	580	0.95	0.94	0.16	
9	581	0.94	0.93	0.16	
10	616	0.93	0.92	0.16	
11	616	0.92	0.91	0.16	
12	571	0.90	0.89	0.16	
13	536	0.89	0.88	0.16	0.12
14	564	0.89	0.88	0.16	
15	575	0.90	0.88	0.16	
16	599	0.90	0.88	0.16	
17	630	0.90	0.89	0.16	
18	578	0.88	0.86	0.16	
19	593	0.87	0.84	0.17	
20	583	0.93	0.84	0.17	
21	572	0.93	0.92	0.11	0.12
22	590	0.94	0.91	0.11	
23	650	0.94	0.93	0.11	
24	684	0.95	0.92	0.11	
25	603	0.95	0.93	0.11	
26	560	0.98	0.95	0.11	
27	610	0.98	0.97	0.11	
28	573	0.98	0.96	0.11	
29	623	0.97	0.95	0.11	
30	634	0.97	0.96	0.11	
31	672	0.98	0.96	0.11	

Average	590	0.92	0.90	0.15	0.11
Minimum	530	0.82	0.81	0.11	0.09
Maximum	684	0.98	0.97	0.22	0.12
Count	31	31	31	31	3
Total	18,287				
95 Percentile				0.22	0.12
Exceedences	0	0	0	0	0
Median	580	0.93	0.92	0.16	0.12

April 2019	Robert St Cl2 (Analyzer Data)			Robert St Reservoir	Robert St Chlorinator
	Flow (Volumetric Rate) (m ³ /d)	Free Cl2 (Max Day) (mg/L)	Free Cl2 (Min Day) (mg/L)	(Turb Meter Data) Turbidity (Daily Avg) (NTU)	Turbidity (NTU)
1	569	0.99	0.98	0.11	
2	609	0.97	0.95	0.11	
3	551	0.96	0.95	0.11	0.07
4	586	0.95	0.94	0.11	
5	552	0.93	0.93	0.11	
6	624	0.91	0.91	0.11	
7	604	0.89	0.89	0.11	
8	618	0.86	0.84	0.11	0.17
9	584	0.85	0.85	0.11	
10	563	0.87	0.85	0.11	
11	560	0.88	0.87	0.11	
12	623	0.91	0.89	0.11	
13	671	0.94	0.92	0.11	
14	615	0.97	0.95	0.11	
15	633	0.99	0.98	0.11	
16	608	0.99	0.97	0.11	0.09
17	635	0.96	0.94	0.11	
18	596	1.00	0.94	0.11	
19	641	1.08	1.00	0.11	
20	644	1.12	1.07	0.11	
21	699	1.18	1.12	0.11	
22	691	1.20	1.16	0.11	
23	662	1.21	1.18	0.11	
24	628	1.21	1.19	0.11	0.14
25	696	1.21	1.18	0.11	
26	680	1.20	1.14	0.11	
27	681	1.12	1.06	0.11	
28	750	1.04	1.01	0.11	
29	909	1.00	0.97	0.11	
30	766	0.98	0.00	0.11	0.10

Average	642	1.01	0.95	0.11	0.11
Minimum	551	0.85	0.00	0.11	0.07
Maximum	909	1.21	1.19	0.11	0.17
Count	30	30	30	30	5
Total	19,248				
95 Percentile				0.11	0.17
Exceedences	0	0	1	0	0
Median	626	0.99	0.95	0.11	0.10

May 2019	Robert St Cl2 (Analyzer Data)			Robert St Reservoir	Robert St Chlorinator
	Flow (Volumetric Rate) (m ³ /d)	Free Cl2 (Max Day) (mg/L)	Free Cl2 (Min Day) (mg/L)	(Turb Meter Data) Turbidity (Daily Avg) (NTU)	Turbidity (NTU)
1	691	0.97	0.95	0.11	
2	709	0.99	0.94	0.11	
3	727	1.00	0.98	0.11	
4	786	1.00	0.98	0.11	
5	893	1.00	0.97	0.11	
6	834	0.98	0.96	0.11	
7	855	0.96	0.92	0.11	0.13
8	870	0.93	0.91	0.11	
9	892	0.93	0.91	0.11	
10	979	0.94	0.92	0.11	
11	1,083	0.94	0.92	0.11	
12	974	0.94	0.92	0.11	
13	853	0.92	0.91	0.11	
14	783	1.01	0.92	0.11	0.15
15	795	0.96	0.95	0.11	
16	803	0.94	0.92	0.11	
17	847	0.92	0.90	0.11	
18	923	0.90	0.88	0.11	
19	966	0.90	0.88	0.11	
20	761	0.90	0.88	0.11	
21	826	0.89	0.87	0.11	
22	961	0.90	0.87	0.11	
23	1,004	0.93	0.87	0.11	0.18
24	813	0.93	0.88	0.11	
25	781	1.01	0.92	0.11	
26	894	1.00	0.96	0.11	
27	997	1.02	0.98	0.11	0.10
28	974	1.04	0.98	0.11	0.13
29	996	1.06	1.01	0.11	
30	1,023	1.15	1.01	0.11	
31	1,085	1.17	1.11	0.11	

Average	883	0.97	0.93	0.11	0.14
Minimum	691	0.89	0.87	0.11	0.10
Maximum	1,085	1.17	1.11	0.11	0.18
Count	31	31	31	31	5
Total	27,378				
95 Percentile				0.11	0.18
Exceedences	0	0	0	0	0
Median	870	0.96	0.92	0.11	0.13

June 2019	Robert St Cl2 (Analyzer Data)			Robert St Reservoir (Turb Meter Data)	Robert St Chlorinator
	Flow (Volumetric Rate) (m ³ /d)	Free Cl2 (Max Day) (mg/L)	Free Cl2 (Min Day) (mg/L)	Turbidity (Daily Avg) (NTU)	Turbidity (NTU)
1	1,102	1.17	1.07	0.11	
2	1,082	1.08	0.97	0.11	
3	1,037	1.11	0.99	0.11	
4	976	1.10	1.00	0.11	0.41
5	863	1.00	0.98	0.11	
6	807	1.05	0.94	0.11	
7	825	0.99	0.97	0.11	
8	981	1.01	1.00	0.11	
9	985	1.01	0.99	0.11	
10	1,058	1.01	0.98	0.11	
11	1,108	1.02	0.97	0.11	0.12
12	1,093	0.99	0.96	0.11	
13	1,062	0.96	0.91	0.11	
14	1,107	0.95	0.93	0.11	
15	1,151	0.95	0.94	0.11	
16	1,021	0.95	0.94	0.11	
17	783	0.94	0.93	0.11	
18	812	0.93	0.92	0.11	0.18
19	661	0.92	0.83	0.11	
20	740	0.84	0.82	0.11	
21	734	0.83	0.83	0.11	
22	780	0.83	0.83	0.11	
23	753	0.85	0.84	0.11	
24	826	0.85	0.82	0.11	
25	809	0.84	0.83	0.11	0.12
26	757	0.83	0.83	0.11	
27	702	0.99	0.81	0.11	
28	713	0.96	0.93	0.11	
29	782	0.98	0.96	0.11	
30	916	0.98	0.95	0.11	

Average	901	0.96	0.92	0.11	0.21
Minimum	661	0.83	0.81	0.11	0.12
Maximum	1,151	1.17	1.07	0.11	0.41
Count	30	30	30	30	4
Total	27,026				
95 Percentile				0.11	0.41
Exceedences	0	0	0	0	0
Median	845	0.97	0.94	0.11	0.15

July 2019	Robert St Cl2 (Analyzer Data)			Robert St Reservoir	Robert St Chlorinator
	Flow (Volumetric Rate) (m ³ /d)	Free Cl2 (Max Day) (mg/L)	Free Cl2 (Min Day) (mg/L)	(Turb Meter Data) Turbidity (Daily Avg) (NTU)	Turbidity (NTU)
1	853	0.95	0.94	0.11	
2	703	0.95	0.94	0.11	
3	737	0.95	0.93	0.11	
4	856	0.96	0.94	0.11	0.17
5	780	0.98	0.94	0.11	
6	804	0.98	0.96	0.11	
7	733	0.99	0.97	0.11	
8	810	0.98	0.98	0.11	
9	684	0.98	0.98	0.11	0.27
10	640	1.01	0.97	0.11	
11	636	1.02	0.97	0.11	
12	738	0.97	0.91	0.11	
13	726	0.92	0.87	0.11	
14	859	0.90	0.87	0.11	
15	769	0.91	0.89	0.11	0.10
16	767	0.93	0.91	0.11	
17	714	0.93	0.91	0.11	
18	748	0.93	0.90	0.11	
19	752	0.98	0.92	0.11	
20	808	0.99	0.96	0.11	
21	833	1.00	0.96	0.11	
22	890	0.99	0.95	0.11	
23	850	0.99	0.96	0.11	0.1
24	858	1.00	0.97	0.11	
25	839	1.02	0.99	0.11	
26	838	1.00	0.95	0.11	
27	843	0.97	0.92	0.11	
28	925	0.93	0.91	0.11	
29	885	0.92	0.91	0.11	0.16
30	891	0.93	0.90	0.11	
31	858	0.99	0.93	0.11	

Average	794	0.97	0.94	0.11	0.16
Minimum	636	0.90	0.87	0.11	0.1
Maximum	925	1.02	0.99	0.11	0.27
Count	31	31	31	31	5
Total	24,627				
95 Percentile				0.11	0.27
Exceedences	0	0	0	0	0
Median	808	0.98	0.94	0.11	0.16

August 2019	Robert St Cl2 (Analyzer Data)			Robert St Reservoir (Turb Meter Data)	Robert St Chlorinator
	Flow (Volumetric Rate) (m ³ /d)	Free Cl2 (Max Day) (mg/L)	Free Cl2 (Min Day) (mg/L)	Turbidity (Daily Avg) (NTU)	Turbidity (NTU)
1	745	1.01	0.97	0.11	
2	793	1.00	0.97	0.11	
3	823	1.02	0.97	0.11	
4	872	1.05	1.00	0.11	
5	898	1.05	1.02	0.11	
6	920	1.06	1.01	0.11	
7	876	1.05	1.01	0.11	0.11
8	756	1.06	0.96	0.11	
9	728	0.98	0.95	0.11	
10	681	1.00	0.96	0.11	
11	662	1.00	0.98	0.11	
12	712	1.02	0.97	0.11	0.12
13	777	1.05	1.01	0.11	
14	774	1.04	0.99	0.11	
15	739	1.02	0.99	0.11	
16	709	1.00	0.95	0.11	
17	718	0.97	0.90	0.11	
18	734	0.90	0.88	0.11	
19	715	0.89	0.87	0.11	
20	666	0.88	0.84	0.11	0.15
21	610	0.86	0.83	0.11	
22	678	0.91	0.84	0.11	
23	636	0.92	0.90	0.11	
24	667	0.93	0.91	0.11	
25	730	0.94	0.92	0.11	
26	714	0.96	0.93	0.11	
27	748	0.95	0.93	0.11	0.10
28	763	0.94	0.92	0.11	
29	724	0.94	0.91	0.11	0.10
30	660	0.93	0.90	0.11	
31	672	0.94	0.92	0.11	
Average	739	0.98	0.94	0.11	0.12
Minimum	610	0.86	0.83	0.11	0.10
Maximum	920	1.06	1.02	0.11	0.15
Count	31	31	31	31	5
Total	22,900				
95 Percentile				0.11	0.15
Exceedences	0	0	0	0	0
Median	728	0.98	0.95	0.11	0.11

September 2019	Robert St Cl2 (Analyzer Data)			Robert St Reservoir (Turb Meter Data)	Robert St Chlorinator
	Flow (Volumetric Rate) (m ³ /d)	Free Cl2 (Max Day) (mg/L)	Free Cl2 (Min Day) (mg/L)	Turbidity (Daily Avg) (NTU)	Turbidity (NTU)
1	693	0.94	0.92	0.11	
2	688	0.96	0.92	0.11	
3	643	0.97	0.92	0.11	
4	643	0.97	0.93	0.11	
5	643	0.96	0.93	0.11	
6	652	0.98	0.96	0.11	
7	598	0.97	0.95	0.11	
8	649	0.97	0.95	0.11	
9	533	0.98	0.95	0.11	
10	574	0.98	0.95	0.11	0.11
11	502	1.00	0.98	0.11	
12	512	1.02	0.98	0.11	
13	526	1.03	1.01	0.11	
14	566	1.04	1.02	0.11	
15	531	1.06	1.03	0.11	
16	462	1.05	1.01	0.11	
17	442	1.02	0.99	0.11	
18	470	1.00	0.97	0.11	
19	504	0.98	0.93	0.11	0.07
20	522	0.95	0.90	0.11	
21	513	0.91	0.88	0.11	
22	561	0.89	0.87	0.11	
23	495	0.92	0.88	0.11	0.10
24	496	0.93	0.91	0.11	
25	450	0.92	0.89	0.11	0.13
26	464	0.90	0.89	0.11	
27	451	0.90	0.88	0.11	
28	505	0.91	0.89	0.11	
29	485	0.93	0.91	0.11	
30	467	0.95	0.92	0.11	

Average	541	0.97	0.94	0.11	0.10
Minimum	442	0.89	0.87	0.11	0.07
Maximum	693	1.06	1.03	0.11	0.13
Count	30	30	30	30	4
Total	16,240				
95 Percentile				0.11	0.13
Exceedences	0	0	0	0	0
Median	518	0.97	0.93	0.11	0.11

October 2019	Robert St Cl2 (Analyzer Data)			Robert St Reservoir (Turb Meter Data)	Robert St Chlorinator
	Flow (Volumetric Rate) (m ³ /d)	Free Cl2 (Max Day) (mg/L)	Free Cl2 (Min Day) (mg/L)	Turbidity (Daily Avg) (NTU)	Turbidity (NTU)
1	450	1.00	0.94	0.11	0.09
2	451	1.00	0.98	0.11	
3	431	1.01	1.00	0.11	
4	468	1.03	0.89	0.11	
5	505	0.95	0.92	0.11	
6	506	0.99	0.96	0.11	
7	432	1.00	0.98	0.11	0.09
8	454	1.02	0.99	0.11	
9	461	1.00	0.99	0.11	
10	450	0.99	0.97	0.11	
11	446	0.97	0.96	0.11	
12	476	0.96	0.95	0.11	
13	478	0.95	0.95	0.11	
14	480	0.95	0.94	0.11	
15	447	0.95	0.95	0.11	
16	445	0.94	0.92	0.11	
17	467	0.92	0.91	0.11	0.19
18	489	0.92	0.92	0.11	
19	497	0.92	0.91	0.11	
20	465	0.92	0.90	0.11	
21	461	0.91	0.90	0.11	0.20
22	454	0.92	0.91	0.11	
23	523	0.93	0.90	0.11	
24	485	0.93	0.92	0.11	
25	557	0.96	0.92	0.11	
26	649	0.97	0.95	0.11	
27	721	0.98	0.97	0.11	
28	421	0.97	0.95	0.11	12
29	413	0.95	0.95	0.11	0.18
30	431	0.94	0.93	0.11	
31	422	0.96	0.92	0.11	

Average	479	0.96	0.94	0.11	2.13
Minimum	413	0.91	0.89	0.11	0.09
Maximum	721	1.03	1.00	0.11	12
Count	31	31	31	31	6
Total	14,835				
95 Percentile				0.11	12.00
Exceedences	0	0	0	0	1
Median	461	0.96	0.94	0.11	0.19

November 2019	Robert St Cl2 (Analyzer Data)			Robert St Reservoir (Turb Meter Data)	Robert St Chlorinator
	Flow (Volumetric Rate) (m ³ /d)	Free Cl2 (Max Day) (mg/L)	Free Cl2 (Min Day) (mg/L)	Turbidity (Daily Avg) (NTU)	Turbidity (NTU)
1	444	0.94	0.92	0.11	
2	444	0.96	0.92	0.11	
3	449	1.00	0.97	0.11	
4	414	1.00	0.98	0.11	
5	416	0.99	0.97	0.11	
6	420	1.00	0.99	0.11	0.11
7	414	1.02	0.96	0.11	
8	411	0.96	0.96	0.11	
9	444	0.98	0.96	0.11	
10	437	0.98	0.97	0.11	
11	446	0.99	0.97	0.11	
12	398	1.01	0.97	0.11	
13	391	0.99	0.98	0.11	
14	414	1.01	0.98	0.11	
15	408	0.99	0.99	0.11	0.52
16	415	1.00	0.98	0.11	
17	440	1.00	0.99	0.11	
18	402	0.97	0.94	0.11	
19	412	0.97	0.95	0.11	
20	423	0.98	0.96	0.11	
21	425	1.02	0.99	0.11	
22	436	1.03	0.89	0.11	0.36
23	445	0.93	0.91	0.11	
24	479	0.94	0.92	0.11	
25	439	0.96	0.94	0.11	
26	430	0.95	0.94	0.11	0.32
27	447	0.97	0.95	0.11	
28	443	0.96	0.94	0.11	
29	436	0.96	0.93	0.11	
30	456	0.95	0.93	0.11	

Average	429	0.98	0.96	0.11	0.33
Minimum	391	0.93	0.89	0.11	0.11
Maximum	479	1.03	0.99	0.11	0.52
Count	30	30	30	30	4
Total	12,878				
95 Percentile				0.11	0.52
Exceedences	0	0	0	0	1
Median	433	0.98	0.96	0.11	0.34

December 2019	Robert St Cl2 (Analyzer Data)			Robert St Reservoir (Turb Meter Data)	Robert St Chlorinator
	Flow (Volumetric Rate) (m ³ /d)	Free Cl2 (Max Day) (mg/L)	Free Cl2 (Min Day) (mg/L)	Turbidity (Daily Avg) (NTU)	Turbidity (NTU)
1	479	0.95	0.93	0.11	
2	407	0.96	0.94	0.11	
3	407	0.98	0.94	0.11	0.19
4	395	0.96	0.95	0.11	
5	407	0.96	0.93	0.11	
6	410	0.93	0.92	0.11	
7	425	0.93	0.91	0.11	
8	443	0.92	0.91	0.11	
9	446	0.94	0.91	0.11	
10	476	0.95	0.93	0.11	0.12
11	463	0.95	0.94	0.11	
12	458	0.96	0.94	0.11	
13	415	0.97	0.95	0.11	
14	397	0.99	0.97	0.11	
15	412	1.01	0.99	0.11	
16	390	1.02	1.00	0.11	0.10
17	381	1.01	1.00	0.11	0.11
18	443	1.03	1.01	0.11	
19	390	1.05	1.02	0.11	
20	390	1.04	1.02	0.11	
21	395	1.04	1.01	0.11	
22	413	1.05	1.01	0.11	
23	401	1.07	1.03	0.11	0.32
24	398	1.10	1.04	0.11	
25	395	1.11	1.08	0.11	
26	404	1.12	1.08	0.11	
27	394	1.11	1.09	0.11	
28	410	1.12	1.10	0.11	
29	430			0.11	
30	426			0.11	
31	432			0.11	

Average	417	1.01	0.98	0.11	0.17
Minimum	381	0.92	0.91	0.11	0.10
Maximum	479	1.12	1.10	0.11	0.32
Count	31	28	28	31	5
Total	12,932				
95 Percentile				0.11	0.32
Exceedences	0	0	0	0	0
Median	410	1.00	0.98	0.11	0.12

* indicates Geometric Mean
** indicates Intraday Average

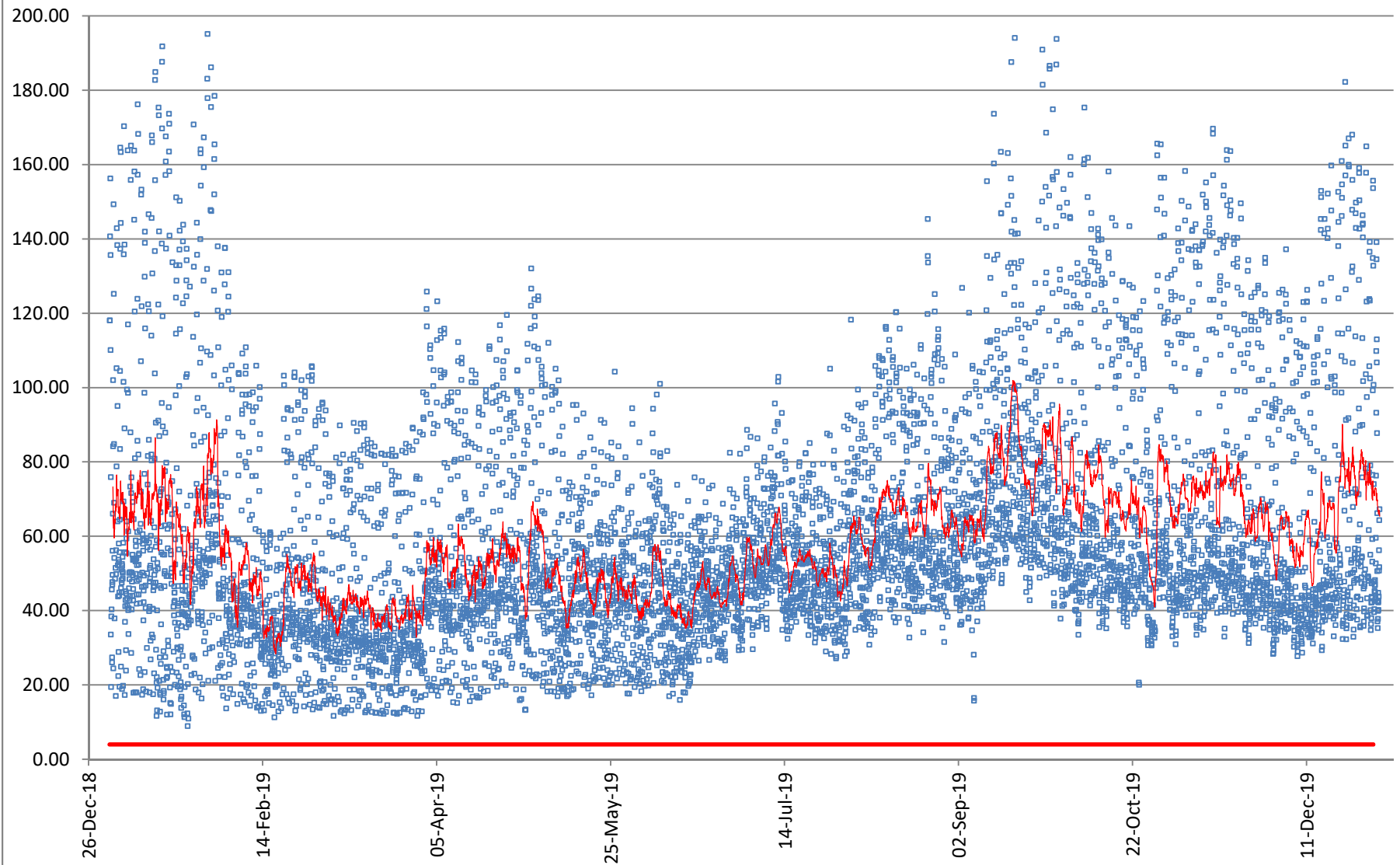
Report Name: E.Coli and Total Coliforms

Water System	Facility	Sampling Point	Collection Date	Escherichia coli / E. coli (Count)	Total Coliforms (count)
				Escherichia coli / E. coli (counts)	Total Coliforms (counts)
				Laboratory Report	Laboratory Report
				counts/100ml	counts/100ml
Crofton Drinking Water	Distribution System Sampling Sites	Crofton Auto Service	01/08/2019	0	0
Crofton Drinking Water	Distribution System Sampling Sites	Crofton Auto Service	02/04/2019	0	0
Crofton Drinking Water	Distribution System Sampling Sites	Crofton Auto Service	03/04/2019	0	0
Crofton Drinking Water	Distribution System Sampling Sites	Crofton Auto Service	04/01/2019	0	0
Crofton Drinking Water	Distribution System Sampling Sites	Crofton Auto Service	05/06/2019	0	0
Crofton Drinking Water	Distribution System Sampling Sites	Crofton Auto Service	06/03/2019	0	0
Crofton Drinking Water	Distribution System Sampling Sites	Crofton Auto Service	07/03/2019	0	0
Crofton Drinking Water	Distribution System Sampling Sites	Crofton Auto Service	08/07/2019	0	0
Crofton Drinking Water	Distribution System Sampling Sites	Crofton Auto Service	09/03/2019	0	0
Crofton Drinking Water	Distribution System Sampling Sites	Crofton Auto Service	10/08/2019	0	0
Crofton Drinking Water	Distribution System Sampling Sites	Crofton Auto Service	11/04/2019	0	0
Crofton Drinking Water	Distribution System Sampling Sites	Crofton Auto Service	12/02/2019	0	0
Crofton Drinking Water	Water Treatment Facilities	Robert St Pump Station	01/21/2019	0	0
Crofton Drinking Water	Water Treatment Facilities	Robert St Pump Station	02/25/2019	0	0
Crofton Drinking Water	Water Treatment Facilities	Robert St Pump Station	03/25/2019	0	0
Crofton Drinking Water	Water Treatment Facilities	Robert St Pump Station	04/23/2019	0	0
Crofton Drinking Water	Water Treatment Facilities	Robert St Pump Station	05/27/2019	0	0
Crofton Drinking Water	Water Treatment Facilities	Robert St Pump Station	06/25/2019	0	0
Crofton Drinking Water	Water Treatment Facilities	Robert St Pump Station	07/23/2019	0	0
Crofton Drinking Water	Water Treatment Facilities	Robert St Pump Station	08/27/2019	0	0
Crofton Drinking Water	Water Treatment Facilities	Robert St Pump Station	09/23/2019	0	0
Crofton Drinking Water	Water Treatment Facilities	Robert St Pump Station	10/28/2019	0	0
Crofton Drinking Water	Water Treatment Facilities	Robert St Pump Station	11/26/2019	0	0
Crofton Drinking Water	Water Treatment Facilities	Robert St Pump Station	12/16/2019	0	0
Crofton Drinking Water	Distribution System Sampling Sites	1414 Tatlo	01/14/2019	0	0
Crofton Drinking Water	Distribution System Sampling Sites	1414 Tatlo	02/19/2019	0	0
Crofton Drinking Water	Distribution System Sampling Sites	1414 Tatlo	03/18/2019	0	0
Crofton Drinking Water	Distribution System Sampling Sites	1414 Tatlo	04/15/2019	0	0
Crofton Drinking Water	Distribution System Sampling Sites	1414 Tatlo	05/21/2019	0	0
Crofton Drinking Water	Distribution System Sampling Sites	1414 Tatlo	06/18/2019	0	0
Crofton Drinking Water	Distribution System Sampling Sites	1414 Tatlo	07/15/2019	0	0
Crofton Drinking Water	Distribution System Sampling Sites	1414 Tatlo	08/19/2019	0	0
Crofton Drinking Water	Distribution System Sampling Sites	1414 Tatlo	09/16/2019	0	0
Crofton Drinking Water	Distribution System Sampling Sites	1414 Tatlo	10/21/2019	0	0
Crofton Drinking Water	Distribution System Sampling Sites	1414 Tatlo	11/20/2019	0	0
Crofton Drinking Water	Distribution System Sampling Sites	1414 Tatlo	12/16/2019	0	0
Crofton Drinking Water	Distribution System Sampling Sites	Crofton Treatment Plant	01/08/2019	0	0
Crofton Drinking Water	Distribution System Sampling Sites	Crofton Treatment Plant	02/19/2019	0	0
Crofton Drinking Water	Distribution System Sampling Sites	Crofton Treatment Plant	03/11/2019	0	0
Crofton Drinking Water	Distribution System Sampling Sites	Crofton Treatment Plant	04/08/2019	0	0
Crofton Drinking Water	Distribution System Sampling Sites	Crofton Treatment Plant	05/13/2019	0	0
Crofton Drinking Water	Distribution System Sampling Sites	Crofton Treatment Plant	06/10/2019	0	0
Crofton Drinking Water	Distribution System Sampling Sites	Crofton Treatment Plant	07/08/2019	0	0
Crofton Drinking Water	Distribution System Sampling Sites	Crofton Treatment Plant	08/13/2019	0	0
Crofton Drinking Water	Distribution System Sampling Sites	Crofton Treatment Plant	09/10/2019	0	0
Crofton Drinking Water	Distribution System Sampling Sites	Crofton Treatment Plant	10/15/2019	0	0
Crofton Drinking Water	Distribution System Sampling Sites	Crofton Treatment Plant	11/12/2019	0	0
Crofton Drinking Water	Distribution System Sampling Sites	Crofton Treatment Plant	12/09/2019	0	0
Crofton Drinking Water	Distribution System Sampling Sites	Camp Qwanoes	01/08/2019	0	0
Crofton Drinking Water	Distribution System Sampling Sites	Camp Qwanoes	02/04/2019	0	0
Crofton Drinking Water	Distribution System Sampling Sites	Camp Qwanoes	03/04/2019	0	0
Crofton Drinking Water	Distribution System Sampling Sites	Camp Qwanoes	04/01/2019	0	0
Crofton Drinking Water	Distribution System Sampling Sites	Camp Qwanoes	05/06/2019	0	0
Crofton Drinking Water	Distribution System Sampling Sites	Camp Qwanoes	06/03/2019	0	0
Crofton Drinking Water	Distribution System Sampling Sites	Camp Qwanoes	07/03/2019	0	0

Crofton Drinking Water	Distribution System Sampling Sites	Camp Qwanoes	08/07/2019	0	0
Crofton Drinking Water	Distribution System Sampling Sites	Camp Qwanoes	09/03/2019	0	0
Crofton Drinking Water	Distribution System Sampling Sites	Camp Qwanoes	10/08/2019	0	0
Crofton Drinking Water	Distribution System Sampling Sites	Camp Qwanoes	11/04/2019	0	0
Crofton Drinking Water	Distribution System Sampling Sites	Camp Qwanoes	12/02/2019	0	0
Crofton Drinking Water	Water Treatment Facilities	Crofton Reservoir #1	01/08/2019	0	0
Crofton Drinking Water	Water Treatment Facilities	Crofton Reservoir #1	02/04/2019	0	0
Crofton Drinking Water	Water Treatment Facilities	Crofton Reservoir #1	03/04/2019	0	0
Crofton Drinking Water	Water Treatment Facilities	Crofton Reservoir #1	04/01/2019	0	0
Crofton Drinking Water	Water Treatment Facilities	Crofton Reservoir #1	05/06/2019	0	0
Crofton Drinking Water	Water Treatment Facilities	Crofton Reservoir #1	06/03/2019	0	0
Crofton Drinking Water	Water Treatment Facilities	Crofton Reservoir #1	07/03/2019	0	0
Crofton Drinking Water	Water Treatment Facilities	Crofton Reservoir #1	08/07/2019	0	0
Crofton Drinking Water	Water Treatment Facilities	Crofton Reservoir #1	09/03/2019	0	0
Crofton Drinking Water	Water Treatment Facilities	Crofton Reservoir #1	10/08/2019	0	0
Crofton Drinking Water	Water Treatment Facilities	Crofton Reservoir #1	11/04/2019	0	0
Crofton Drinking Water	Water Treatment Facilities	Crofton Reservoir #1	12/02/2019	0	0
Crofton Drinking Water	Water Treatment Facilities	Crofton Reservoir #2	01/14/2019	0	0
Crofton Drinking Water	Water Treatment Facilities	Crofton Reservoir #2	02/19/2019	0	0
Crofton Drinking Water	Water Treatment Facilities	Crofton Reservoir #2	03/18/2019	0	0
Crofton Drinking Water	Water Treatment Facilities	Crofton Reservoir #2	04/15/2019	0	0
Crofton Drinking Water	Water Treatment Facilities	Crofton Reservoir #2	05/21/2019	0	0
Crofton Drinking Water	Water Treatment Facilities	Crofton Reservoir #2	06/18/2019	0	0
Crofton Drinking Water	Water Treatment Facilities	Crofton Reservoir #2	07/15/2019	0	0
Crofton Drinking Water	Water Treatment Facilities	Crofton Reservoir #2	08/19/2019	0	0
Crofton Drinking Water	Water Treatment Facilities	Crofton Reservoir #2	09/16/2019	0	0
Crofton Drinking Water	Water Treatment Facilities	Crofton Reservoir #2	10/21/2019	0	0
Crofton Drinking Water	Water Treatment Facilities	Crofton Reservoir #2	11/20/2019	0	0
Crofton Drinking Water	Water Treatment Facilities	Crofton Reservoir #2	12/16/2019	0	0

* indicates Geometric Mean
 ** indicates Intraday Average

Crofton Water Quality - Log Reduction of Viruses



□ Log Reduction of Viruses — Operating Permit Limit (Minimum Allowable) — 24 per. Mov. Avg. (Log Reduction of Viruses)

Aluminum (total)(Lab Data Transfer)		Sampling Point ID	Measurement Name	Criteria
01/28/2019 13:00	0.0218 mg/L	6-3-SR	Aluminum (total)	<=0.2 Secondary Standard
# samples:	1	min:	0.0218 mg/L	
# detects:	1	max:	0.0218 mg/L	
# non-detects:	0	avg:	0.0218 mg/L (based on 1 numerical results)	
# of Exceedences:	0			

Antimony (total)(Lab Data Transfer)		Sampling Point ID	Measurement Name	Criteria
01/28/2019 13:00	< 0.00020 mg/L	6-3-SR	Antimony (total)	<=0.006 MCL
# samples:	1	min:	< 0.00020 mg/L	
# detects:	0	max:	< 0.00020 mg/L	
# non-detects:	1	avg:	n/a (based on 0 numerical results)	
# of Exceedences:	0			

Arsenic (total)(Lab Data Transfer)		Sampling Point ID	Measurement Name	Criteria
01/28/2019 13:00	< 0.00050 mg/L	6-3-SR	Arsenic (total)	<=0.010 MCL
# samples:	1	min:	< 0.00050 mg/L	
# detects:	0	max:	< 0.00050 mg/L	
# non-detects:	1	avg:	n/a (based on 0 numerical results)	
# of Exceedences:	0			

Barium (total)(Lab Data Transfer)		Sampling Point ID	Measurement Name	Criteria
01/28/2019 13:00	< 0.0050 mg/L	6-3-SR	Barium (total)	<=2 MCL
# samples:	1	min:	< 0.0050 mg/L	
# detects:	0	max:	< 0.0050 mg/L	
# non-detects:	1	avg:	n/a (based on 0 numerical results)	
# of Exceedences:	0			

Beryllium (total)(Lab Data Transfer)		Sampling Point ID	Measurement Name	Criteria
01/28/2019 13:00	< 0.00010 mg/L	6-3-SR	Beryllium (total)	<=0.004 MCL
# samples:	1	min:	< 0.00010 mg/L	



# detects:	0	max:	< 0.00010 mg/L
# non-detects:	1	avg:	n/a (based on 0 numerical results)
# of Exceedences:	0		

Bismuth (total)(Lab Data Transfer)		Sampling Point ID	Measurement Name	Criteria
01/28/2019 13:00	< 0.10 ug/L	6-3-SR	Bismuth (total)	

# samples:	1	min:	< 0.10 ug/L
# detects:	0	max:	< 0.10 ug/L
# non-detects:	1	avg:	n/a (based on 0 numerical results)
# of Exceedences:	0		

Boron (total)(Lab Data Transfer)		Sampling Point ID	Measurement Name	Criteria
01/28/2019 13:00	0.0097 mg/L	6-3-SR	Boron (total)	<=5 MAC

# samples:	1	min:	0.0097 mg/L
# detects:	1	max:	0.0097 mg/L
# non-detects:	0	avg:	0.0097 mg/L (based on 1 numerical results)
# of Exceedences:	0		

Bromate(Lab Data Transfer)		Sampling Point ID	Measurement Name	Criteria
01/28/2019 13:00	< 0.01 mg/L	6-3-SR	Bromate	<=0.01 MAC

# samples:	1	min:	< 0.01 mg/L
# detects:	0	max:	< 0.01 mg/L
# non-detects:	1	avg:	n/a (based on 0 numerical results)
# of Exceedences:	0		

Cadmium (total)(Lab Data Transfer)		Sampling Point ID	Measurement Name	Criteria
01/28/2019 13:00	< 0.000010 mg/L	6-3-SR	Cadmium (total)	<=0.005 MCL

# samples:	1	min:	< 0.000010 mg/L
# detects:	0	max:	< 0.000010 mg/L
# non-detects:	1	avg:	n/a (based on 0 numerical results)
# of Exceedences:	0		

Calcium (total)(Lab Data Transfer)		Sampling Point ID	Measurement Name	Criteria
01/28/2019 13:00	7,400 ug/L	6-3-SR	Calcium (total)	
# samples:	1	min:	7,400 ug/L	
# detects:	1	max:	7,400 ug/L	
# non-detects:	0	avg:	7,400 ug/L (based on 1 numerical results)	
# of Exceedences:	0			

Chromium (total)(Lab Data Transfer)		Sampling Point ID	Measurement Name	Criteria
01/28/2019 13:00	< 0.00050 mg/L	6-3-SR	Chromium (total)	<=0.1 MCL
# samples:	1	min:	< 0.00050 mg/L	
# detects:	0	max:	< 0.00050 mg/L	
# non-detects:	1	avg:	n/a (based on 0 numerical results)	
# of Exceedences:	0			

Cobalt (total)(Lab Data Transfer)		Sampling Point ID	Measurement Name	Criteria
01/28/2019 13:00	< 0.10 ug/L	6-3-SR	Cobalt (total)	
# samples:	1	min:	< 0.10 ug/L	
# detects:	0	max:	< 0.10 ug/L	
# non-detects:	1	avg:	n/a (based on 0 numerical results)	
# of Exceedences:	0			

Copper (total)(Lab Data Transfer)		Sampling Point ID	Measurement Name	Criteria
01/28/2019 13:00	0.00162 mg/L	6-3-SR	Copper (total)	<=1 Secondary Standard
# samples:	1	min:	0.00162 mg/L	
# detects:	1	max:	0.00162 mg/L	
# non-detects:	0	avg:	0.00162 mg/L (based on 1 numerical results)	
# of Exceedences:	0			

Cyanide (total)(Lab Data Transfer)		Sampling Point ID	Measurement Name	Criteria
01/28/2019 13:00	< 0.0020 mg/L	6-3-SR	Cyanide (total)	<=0.2 MAC for Cyanide (free)
# samples:	1	min:	< 0.0020 mg/L	
# detects:	0	max:	< 0.0020 mg/L	



# non-detects:	1	avg:	n/a (based on 0 numerical results)
# of Exceedences:	0		

Diquat(Lab Data Transfer)		Sampling Point ID	Measurement Name	Criteria	
01/28/2019 13:00	< 0.0100 mg/L	6-3-SR	Diquat	<=0.02	MCL

# samples:	1	min:	< 0.0100 mg/L
# detects:	0	max:	< 0.0100 mg/L
# non-detects:	1	avg:	n/a (based on 0 numerical results)
# of Exceedences:	0		

Fluoride(Lab Data Transfer)		Sampling Point ID	Measurement Name	Criteria	
01/28/2019 13:00	< 0.1 mg/L	6-3-SR	Fluoride	<=4.0	MCL

# samples:	1	min:	< 0.1 mg/L
# detects:	0	max:	< 0.1 mg/L
# non-detects:	1	avg:	n/a (based on 0 numerical results)
# of Exceedences:	0		

Glyphosate(Lab Data Transfer)		Sampling Point ID	Measurement Name	Criteria	
01/28/2019 13:00	< 0.05 mg/L	6-3-SR	Glyphosate	<=0.7	MCL

# samples:	1	min:	< 0.05 mg/L
# detects:	0	max:	< 0.05 mg/L
# non-detects:	1	avg:	n/a (based on 0 numerical results)
# of Exceedences:	0		

Hardness (total, as CaCO3)(Lab Data Transfer)		Sampling Point ID	Measurement Name	Criteria	
01/28/2019 13:00	21.3 mg/L	6-3-SR	Hardness (total, as CaCO3)		

# samples:	1	min:	21.3 mg/L
# detects:	1	max:	21.3 mg/L
# non-detects:	0	avg:	21.3 mg/L (based on 1 numerical results)
# of Exceedences:	0		

Iron(Lab Data Transfer)		Sampling Point ID	Measurement Name	Criteria
01/28/2019 13:00	< 0.01 mg/L	6-3-SR	Iron	<=0.3 Secondary Standard
# samples:	1	min:	< 0.01 mg/L	
# detects:	0	max:	< 0.01 mg/L	
# non-detects:	1	avg:	n/a (based on 0 numerical results)	
# of Exceedences:	0			

Lead (total)(Lab Data Transfer)		Sampling Point ID	Measurement Name	Criteria
01/28/2019 13:00	0.00056 mg/L	6-3-SR	Lead (total)	<=0.015 MCL
11/21/2019 00:00	0.00042 mg/L	6-3-SR	Lead (total)	<=0.015 MCL
# samples:	2	min:	0.00042 mg/L	
# detects:	2	max:	0.00056 mg/L	
# non-detects:	0	avg:	0.00049 mg/L (based on 2 numerical results)	
# of Exceedences:	0			

Lithium (total)(Lab Data Transfer)		Sampling Point ID	Measurement Name	Criteria
01/28/2019 13:00	< 0.10 ug/L	6-3-SR	Lithium (total)	
# samples:	1	min:	< 0.10 ug/L	
# detects:	0	max:	< 0.10 ug/L	
# non-detects:	1	avg:	n/a (based on 0 numerical results)	
# of Exceedences:	0			

Magnesium (total)(Lab Data Transfer)		Sampling Point ID	Measurement Name	Criteria
01/28/2019 13:00	685 ug/L	6-3-SR	Magnesium (total)	
# samples:	1	min:	685 ug/L	
# detects:	1	max:	685 ug/L	
# non-detects:	0	avg:	685 ug/L (based on 1 numerical results)	
# of Exceedences:	0			

Manganese (total)(Lab Data Transfer)		Sampling Point ID	Measurement Name	Criteria
01/28/2019 13:00	0.00117 mg/L	6-3-SR	Manganese (total)	<=0.05 Secondary Standard
# samples:	1	min:	0.00117 mg/L	
# detects:	1	max:	0.00117 mg/L	

# non-detects:	0	avg:	0.00117 mg/L (based on 1 numerical results)
# of Exceedences:	0		

Mercury (total)(Lab Data Transfer)		Sampling Point ID	Measurement Name	Criteria	
01/28/2019 13:00	< 0.000010 mg/L	6-3-SR	Mercury (total)	<=0.002	MCL

# samples:	1	min:	< 0.000010 mg/L
# detects:	0	max:	< 0.000010 mg/L
# non-detects:	1	avg:	n/a (based on 0 numerical results)
# of Exceedences:	0		

Molybdenum (total)(Lab Data Transfer)		Sampling Point ID	Measurement Name	Criteria	
01/28/2019 13:00	< 0.10 ug/L	6-3-SR	Molybdenum (total)		

# samples:	1	min:	< 0.10 ug/L
# detects:	0	max:	< 0.10 ug/L
# non-detects:	1	avg:	n/a (based on 0 numerical results)
# of Exceedences:	0		

Nickel (total)(Lab Data Transfer)		Sampling Point ID	Measurement Name	Criteria	
01/28/2019 13:00	< 0.00040 mg/L	6-3-SR	Nickel (total)	<=0.1	MCL

# samples:	1	min:	< 0.00040 mg/L
# detects:	0	max:	< 0.00040 mg/L
# non-detects:	1	avg:	n/a (based on 0 numerical results)
# of Exceedences:	0		

Nitrate (as N)(Lab Data Transfer)		Sampling Point ID	Measurement Name	Criteria	
01/28/2019 13:00	0.048 mg/L	6-3-SR	Nitrate (as N)	<=10	MCL

# samples:	1	min:	0.048 mg/L
# detects:	1	max:	0.048 mg/L
# non-detects:	0	avg:	0.048 mg/L (based on 1 numerical results)
# of Exceedences:	0		



Nitrilotriacetic acid / NTA(Lab Data Transfer)		Sampling Point ID	Measurement Name	Criteria	
01/28/2019 13:00	< 0.2 mg/L	6-3-SR	Nitrilotriacetic acid / NTA	<=0.4	MAC
# samples:	1	min:	< 0.2 mg/L		
# detects:	0	max:	< 0.2 mg/L		
# non-detects:	1	avg:	n/a (based on 0 numerical results)		
# of Exceedences:	0				

Paraquat(Lab Data Transfer)		Sampling Point ID	Measurement Name	Criteria	
01/28/2019 13:00	< 0.0050 mg/L	6-3-SR	Paraquat	<=0.007	MAC for Paraquat ion. Equivalent to 0.01 mg/L for paraquat as dichloride
# samples:	1	min:	< 0.0050 mg/L		
# detects:	0	max:	< 0.0050 mg/L		
# non-detects:	1	avg:	n/a (based on 0 numerical results)		
# of Exceedences:	0				

Potassium (total)(Lab Data Transfer)		Sampling Point ID	Measurement Name	Criteria	
01/28/2019 13:00	160 ug/L	6-3-SR	Potassium (total)		
# samples:	1	min:	160 ug/L		
# detects:	1	max:	160 ug/L		
# non-detects:	0	avg:	160 ug/L (based on 1 numerical results)		
# of Exceedences:	0				

Selenium (total)(Lab Data Transfer)		Sampling Point ID	Measurement Name	Criteria	
01/28/2019 13:00	< 0.00050 mg/L	6-3-SR	Selenium (total)	<=0.05	MCL
# samples:	1	min:	< 0.00050 mg/L		
# detects:	0	max:	< 0.00050 mg/L		
# non-detects:	1	avg:	n/a (based on 0 numerical results)		
# of Exceedences:	0				

Silicon (total, as Si)(Lab Data Transfer)		Sampling Point ID	Measurement Name	Criteria
01/28/2019 13:00	1,800 ug/L	6-3-SR	Silicon (total, as Si)	
# samples:	1	min:	1,800 ug/L	
# detects:	1	max:	1,800 ug/L	
# non-detects:	0	avg:	1,800 ug/L (based on 1 numerical results)	
# of Exceedences:	0			

Silver (total)(Lab Data Transfer)		Sampling Point ID	Measurement Name	Criteria
01/28/2019 13:00	< 0.000050 mg/L	6-3-SR	Silver (total)	<=0.1 Secondary Standard
# samples:	1	min:	< 0.000050 mg/L	
# detects:	0	max:	< 0.000050 mg/L	
# non-detects:	1	avg:	n/a (based on 0 numerical results)	
# of Exceedences:	0			

Sodium (total)(Lab Data Transfer)		Sampling Point ID	Measurement Name	Criteria
01/28/2019 13:00	2.34 mg/L	6-3-SR	Sodium (total)	<=160 MCL
# samples:	1	min:	2.34 mg/L	
# detects:	1	max:	2.34 mg/L	
# non-detects:	0	avg:	2.34 mg/L (based on 1 numerical results)	
# of Exceedences:	0			

Strontium (total)(Lab Data Transfer)		Sampling Point ID	Measurement Name	Criteria
01/28/2019 13:00	19.2 ug/L	6-3-SR	Strontium (total)	
# samples:	1	min:	19.2 ug/L	
# detects:	1	max:	19.2 ug/L	
# non-detects:	0	avg:	19.2 ug/L (based on 1 numerical results)	
# of Exceedences:	0			

Sulfur (total)(Lab Data Transfer)		Sampling Point ID	Measurement Name	Criteria
01/28/2019 13:00	< 3,000 ug/L	6-3-SR	Sulfur (total)	
# samples:	1	min:	< 3,000 ug/L	
# detects:	0	max:	< 3,000 ug/L	
# non-detects:	1	avg:	n/a (based on 0 numerical results)	



of Exceedences: 0

Sulphate(Lab Data Transfer)		Sampling Point ID	Measurement Name	Criteria
01/28/2019 13:00	8 mg/L	6-3-SR	Sulphate	<=250 Secondary Standard
# samples:	1	min:	8 mg/L	
# detects:	1	max:	8 mg/L	
# non-detects:	0	avg:	8 mg/L (based on 1 numerical results)	
# of Exceedences:	0			

Sulphide (total, as S)(Lab Data Transfer)		Sampling Point ID	Measurement Name	Criteria
01/28/2019 13:00	< 20 ug/L	6-3-SR	Sulphide (total, as S)	
# samples:	1	min:	< 20 ug/L	
# detects:	0	max:	< 20 ug/L	
# non-detects:	1	avg:	n/a (based on 0 numerical results)	
# of Exceedences:	0			

Thallium (total)(Lab Data Transfer)		Sampling Point ID	Measurement Name	Criteria
01/28/2019 13:00	< 0.000020 mg/L	6-3-SR	Thallium (total)	<=0.002 MCL
# samples:	1	min:	< 0.000020 mg/L	
# detects:	0	max:	< 0.000020 mg/L	
# non-detects:	1	avg:	n/a (based on 0 numerical results)	
# of Exceedences:	0			

Tin (total)(Lab Data Transfer)		Sampling Point ID	Measurement Name	Criteria
01/28/2019 13:00	< 0.20 ug/L	6-3-SR	Tin (total)	
# samples:	1	min:	< 0.20 ug/L	
# detects:	0	max:	< 0.20 ug/L	
# non-detects:	1	avg:	n/a (based on 0 numerical results)	
# of Exceedences:	0			

Titanium (total)(Lab Data Transfer)		Sampling Point ID	Measurement Name	Criteria
01/28/2019 13:00	< 5.0 ug/L	6-3-SR	Titanium (total)	



# samples:	1	min:	< 5.0 ug/L
# detects:	0	max:	< 5.0 ug/L
# non-detects:	1	avg:	n/a (based on 0 numerical results)
# of Exceedences:	0		

Total Chloramines (as combined chlorine)(Lab Data Transfer)		Sampling Point ID	Measurement Name	Criteria	
01/28/2019 13:00	0.150 mg/L	6-3-SR	Total Chloramines (as combined chlorine)	<=3.0	MAC

# samples:	1	min:	0.150 mg/L
# detects:	1	max:	0.150 mg/L
# non-detects:	0	avg:	0.150 mg/L (based on 1 numerical results)
# of Exceedences:	0		

Uranium (total)(Lab Data Transfer)		Sampling Point ID	Measurement Name	Criteria	
01/28/2019 13:00	< 0.000020 mg/L	6-3-SR	Uranium (total)	<=0.02	MAC

# samples:	1	min:	< 0.000020 mg/L
# detects:	0	max:	< 0.000020 mg/L
# non-detects:	1	avg:	n/a (based on 0 numerical results)
# of Exceedences:	0		

Vanadium (total)(Lab Data Transfer)		Sampling Point ID	Measurement Name	Criteria	
01/28/2019 13:00	< 1.0 ug/L	6-3-SR	Vanadium (total)		

# samples:	1	min:	< 1.0 ug/L
# detects:	0	max:	< 1.0 ug/L
# non-detects:	1	avg:	n/a (based on 0 numerical results)
# of Exceedences:	0		

Zinc (total)(Lab Data Transfer)		Sampling Point ID	Measurement Name	Criteria	
01/28/2019 13:00	< 0.0040 mg/L	6-3-SR	Zinc (total)	<=5	Secondary Standard

# samples:	1	min:	< 0.0040 mg/L
# detects:	0	max:	< 0.0040 mg/L
# non-detects:	1	avg:	n/a (based on 0 numerical results)
# of Exceedences:	0		

Zirconium (total)(Lab Data Transfer)		Sampling Point ID	Measurement Name Criteria
01/28/2019 13:00	< 0.10 ug/L	6-3-SR	Zirconium (total)
# samples:	1	min:	< 0.10 ug/L
# detects:	0	max:	< 0.10 ug/L
# non-detects:	1	avg:	n/a (based on 0 numerical results)
# of Exceedences:	0		

Result Legend:

P=present, A=absent, PR=presumptive, ND=non-detect, OR=over-range, OG=overgrown, Y=yes, N=no, TNTC=too numerous to count, NR=no result, NT=not tested, IG=ignore, ER=external report, SC=see comment

- < means less than lower detection limit shown
- > means greater than upper detection limit shown
- « means detected & less than number shown
- » means detected & greater than number shown

* Indicates Criteria is exceeded

