

December 6, 2021

File: 5610-55

Environmental Health Officer
Central Vancouver Island Health Region
1665 Grant Avenue
NANAIMO BC V9S 5K7

**Re: Crofton Water System Water Quality Report
Premises Number 1310822
Report for the Period Jan 1/20 to Dec 31/20**

Please find the Municipality of North Cowichan's Water quality report for the Crofton Water System attached.

Sincerely

Clay Reitsma, M. Eng., P. Eng
Senior Manager, Engineering

clay.reitsma@northcowichan.ca



1 Operator Information

Contact Name Clay Reitsma, M.Eng. , P.Eng.
Phone 250-746-3100
Email clay.reitsma@northcowichan.ca

2 System Description

This is a surface water supply. Water is pumped from the Cowichan River to Catalyst's water treatment plant. The water treatment plant consists of a coagulation and flocculation process, followed by sedimentation and filtration. The water is chlorinated at the water treatment plant and pumped to the Robert Street Reservoir where a small amount of additional chlorine is added to ensure adequate reduction of Giardia and Cryptosporidium cysts.

3 Compliance Criteria

In addition to Island Health's permit requirements show in Table 1 below, water samples are regularly analyzed through certified laboratories to ensure water quality meets BC Water Quality Guidelines.

Table 1: Compliance Criteria specified in Island Health Permit.

Parameter	Compliance Criteria	Sampling Criteria	Comments
Viruses (E.coli, Total Coliforms)	>= 4 Log Removal		
Cryptosporidium oocysts and Giardia Cysts	>= 3 Log Removal		
Escherichia Coli and Total Coliforms	None Detectable		
Distribution system Turbidity	<= 1.0 NTU		
Source Water Turbidity	< 0.9 NTU		
Residual Disinfectant (Free Chlorine)	> 0.2 mg/L	Weekly	Maintained throughout entire distribution system

4 Boil Advisories

4.1 Future Improvements

No future improvements are contemplated at this time.

5 Additional Comments

Should you have any questions regarding this report, please do not hesitate to contact the Municipality at (250) 746-3100.

Sincerely

A handwritten signature in blue ink, appearing to read 'Clay Reitsma', with a stylized, cursive script.

Clay Reitsma, M.Eng., P.Eng.
Senior Manager, Engineering

cc: Robert Bell, Manager, Utilities
Brian Houle, Catalyst Paper

CR/cr

Enclosures

6 Results

See below for the results of various water quality parameters.

Report Name: Crofton Water Quality Report

Report Subtitle: Crofton Water Quality Report

January 2020	Robert St Cl2 (Analyzer Data)			Robert St Reservoir (Turb Meter Data)	Robert St Chlorinator
	Flow (Volumetric Rate) (m³/d)	Free Cl2 (Max Day) (mg/L)	Free Cl2 (Min Day) (mg/L)	Turbidity (Daily Avg) (NTU)	Turbidity (NTU)
1	434.27	1.16	1.14	0.11	
2	423.19	1.16	1.13	0.11	
3	405.01	1.14	1.11	0.11	
4	402.65	1.12	1.08	0.11	
5	417.27	1.09	1.07	0.11	
6	411.69	1.08	1.06	0.11	0.10
7	397.24	1.07	1.05	0.11	
8	410.54	1.05	1.03	0.11	
9	419.59	1.06	1.03	0.11	
10	417.76	1.06	1.05	0.11	
11	439.38	1.06	1.05	0.11	
12	481.31	1.06	1.04	0.11	
13	498.02	1.05	1.04	0.11	
14	503.04	1.03	1.03	0.11	0.24
15	519.79	1.03	1.02	0.11	
16	552.5	1.02	0.95	0.11	
17	561.48	0.94	0.94	0.11	
18	565.93	0.94	0.92	0.11	
19	605.89	0.92	0.92	0.11	
20	624.67	0.92	0.92	0.11	0.11
21	623.96	0.92	0.91	0.11	
22	600.93	0.98	0.9	0.11	
23	523.86	0.99	0.97	0.11	
24	471.07	1.05	1	0.11	
25	501.31	1.1	1.07	0.11	
26	535.99	1.14	1.1	0.11	
27	520.54	1.18	1.15	0.11	0.11
28	458.9	1.57	1.18	0.11	
29	249.35	1.25	1.22	0.11	
30	384.11	1.23	1.22	0.11	
31	401.77	1.23	1.23	0.11	
Average	476.23	1.08	1.05	0.11	0.14
Minimum	249.35	0.92	0.9	0.11	0.10
Maximum	624.67	1.57	1.23	0.11	0.24
Count	31	31	31	31	4
Total	14,763.01				
95 Percentile				0.11	0.24
Exceedences	0	0	0	0	0
Median	471.07	1.06	1.05	0.11	0.11

February 2020	Robert St Cl2 (Analyzer Data)			Robert St Reservoir	Robert St Chlorinator
	Flow (Volumetric Rate) (m ³ /d)	Free Cl2 (Max Day) (mg/L)	Free Cl2 (Min Day) (mg/L)	(Turb Meter Data) Turbidity (Daily Avg) (NTU)	Turbidity (NTU)
1	427.74	1.22	1.21	0.11	
2	431.93	1.26	1.12	0.11	
3	431.77	1.13	1.12	0.11	
4	434.53	1.11	1.11	0.11	0.12
5	433.25	1.07	1.05	0.11	
6	439.03	1.04	1.04	0.11	
7	465.03	1.02	0.97	0.17	
8	503.36	1.03	1	0.17	
9	519.26	1.06	1.05	0.17	
10	484.34	1.08	1.07	0.17	
11	424.36	1.1	1.1	0.17	
12	423.44	1.1	1.09	0.17	
13	415.12	1.18	1.09	0.17	0.36
14	417.21	1.18	1.17	0.17	
15	434.84	1.15	1.15	0.17	
16	429.4	1.11	1.11	0.18	
17	434.23	1.09	1.09	0.18	
18	436.13	1.08	1.08	0.18	0.17
19	399.73	1.07	1.07	0.19	
20	417.34	1.06	1.06	0.18	
21	411.46	1.07	1.07	0.19	
22	413.89	1.09	1.07	0.19	
23	446.07	1.22	1.1	0.21	
24	499.65	1.22	1.22	0.32	0.35
25	444.67	1.17	1.12	0.27	
26	431.09	1.11	1.07	0.24	
27	454.94	1.04	1.04	0.23	
28	205.79	1.02	0.88	0.46	
29	218.91	0.97	0.95	0.29	

Average	425.12	1.11	1.08	0.19	0.25
Minimum	205.79	0.97	0.88	0.11	0.12
Maximum	519.26	1.26	1.22	0.46	0.36
Count	29	29	29	29	4
Total	12,328.51				
95 Percentile				0.39	0.36
Exceedences	0	0	0	0	0
Median	431.93	1.09	1.08	0.17	0.26

March 2020	Robert St Cl2 (Analyzer Data)			Robert St Reservoir	Robert St Chlorinator
	Flow (Volumetric Rate) (m ³ /d)	Free Cl2 (Max Day) (mg/L)	Free Cl2 (Min Day) (mg/L)	(Turb Meter Data) Turbidity (Daily Avg) (NTU)	Turbidity (NTU)
1	127.34	1	0.89	0.22	
2	19.56	1.06	0.93	0.17	0.23
3	102.45	0.96	0.95	0.2	
4	380.09	0.94	0.93	0.2	
5	431.01	0.92	0.92	0.2	
6	434.16	0.91	0.91	0.2	
7	444.18	0.93	0.92	0.2	
8	454.84	0.94	0.93	0.2	
9	443.91	0.95	0.95	0.2	
10	439.61	0.96	0.96	0.2	0.17
11	431.41	0.97	0.96	0.2	
12	430.8	1.01	0.97	0.2	
13	430.08	1.01	0.99	0.2	
14	453.26	1.01	1.01	0.2	
15	479.05	1	1	0.2	
16	462.31	0.99	0.99	0.2	0.37
17	453.93	0.99	0.99	0.2	
18	478.22	1	0.98	0.2	
19	474.69	0.99	0.99	0.09	
20	480.06	0.99	0.99	0.08	
21	497.74	0.98	0.97	0.08	
22	482.51	0.98	0.98	0.07	
23	488.01	0.98	0.96	0.07	0.27
24	470.79	3.03	0.94	0.07	
25	568.46	1.13	0.93	0.08	
26	560.73	0.99	0.91	0.07	
27	473.15	0.99	0.98	0.07	
28	480.04	0.95	0.95	0.07	
29	492.09	0.94	0.94	0.07	
30	476.12	0.92	0.92	0.07	0.16
31					

Average	428.02	1.05	0.95	0.15	0.24
Minimum	19.56	0.91	0.89	0.07	0.16
Maximum	568.46	3.03	1.01	0.22	0.37
Count	30	30	30	30	5
Total	12,840.60				
95 Percentile				0.21	0.37
Exceedences	0	0	0	0	0
Median	458.58	0.99	0.96	0.20	0.23

April 2020	Robert St Cl2 (Analyzer Data)			Robert St Reservoir (Turb Meter Data)	Robert St Chlorinator
	Flow (Volumetric Rate) (m³/d)	Free Cl2 (Max Day) (mg/L)	Free Cl2 (Min Day) (mg/L)	Turbidity (Daily Avg) (NTU)	Turbidity (NTU)
1	464.12	0.9	0.9	0.08	
2	467.84	0.98	0.89	0.1	
3	471.45	0.99	0.98	0.09	
4	480.71	0.99	0.99	0.09	
5	496.8	1	0.99	0.08	
6	493.53	1.01	0.99	0.09	0.12
7	487.6	1	0.99	0.08	
8	491.34	1	0.9	0.07	
9	499.79	0.91	0.9	0.07	
10	525.54	0.91	0.9	0.07	
11	542	0.91	0.89	0.07	
12	565.45	0.9	0.89	0.06	
13	585.62	0.89	0.88	0.06	
14	561.01	1.12	0.27	0.06	
15	544.77	0.92	0.89	0.06	
16	559.61	0.93	0.91	0.06	
17	546.46	0.94	0.93	0.06	0.49
18	528.52	0.94	0.93	0.06	
19	542.76	0.93	0.93	0.06	
20	550.28	0.93	0.92	0.06	0.08
21	524.89	0.92	0.91	0.06	
22	500.3	0.9	0.9	0.06	
23	501.28	0.96	0.87	0.06	
24	493.54	0.96	0.94	0.06	
25	497.36	0.93	0.92	0.07	
26	518.86	0.92	0.91	0.07	
27	517.48	0.91	0.9	0.07	
28	493.7	0.9	0.88	0.07	0.07
29	480.25	0.89	0.86	0.07	
30	480.86	0.86	0.86	0.07	

Average	513.79	0.94	0.89	0.07	0.19
Minimum	464.12	0.86	0.27	0.06	0.07
Maximum	585.62	1.12	0.99	0.1	0.49
Count	30	30	30	30	4
Total	15,413.72				
95 Percentile				0.09	0.49
Exceedences	0	0	0	0	0
Median	500.79	0.93	0.90	0.07	0.10

May 2020	Robert St Cl2 (Analyzer Data)			Robert St Reservoir (Turb Meter Data)	Robert St Chlorinator
	Flow (Volumetric Rate) (m³/d)	Free Cl2 (Max Day) (mg/L)	Free Cl2 (Min Day) (mg/L)	Turbidity (Daily Avg) (NTU)	Turbidity (NTU)
1	488.11	0.97	0.85	0.06	
2	495.93	1.01	0.97	0.06	
3	504.92	1.05	1.02	0.06	
4	508.75	1.07	1.05	0.06	0.10
5	513.17	1.06	1.05	0.06	
6	529.48	1.08	0.93	0.06	
7	550.14	0.94	0.93	0.06	
8	587.3	0.93	0.93	0.06	
9	652.24	0.93	0.92	0.06	
10	701.5	0.92	0.92	0.06	
11	668.92	0.92	0.92	0.06	
12	568.07	0.9	0.9	0.06	
13	525.88	0.9	0.9	0.06	0.27
14	532.19	0.9	0.89	0.07	
15	535.43	0.9	0.86	0.08	
16	517.39	0.89	0.87	0.08	
17	503.76	0.89	0.88	0.09	
18	548.67	0.9	0.89	0.09	
19	578.26	0.89	0.87	0.09	
20	565.57	0.89	0.86	0.11	0.14
21	549.28	0.9	0.88	0.11	
22	551.76	0.9	0.88	0.1	
23	596.06	0.89	0.88	0.09	
24	604.55	0.86	0.86	0.09	
25	557.5	0.86	0.85	0.08	0.25
26	550.87	0.85	0.82	0.08	0.25
27	611.69	0.85	0.82	0.08	
28	668.48	0.86	0.83	0.07	
29	641.54	0.87	0.85	0.08	
30	598.48	0.87	0.85	0.07	
31	599.6	0.87	0.86	0.07	

Average	567.92	0.92	0.90	0.07	0.20
Minimum	488.11	0.85	0.82	0.06	0.10
Maximum	701.5	1.08	1.05	0.11	0.27
Count	31	31	31	31	5
Total	17,605.49				
95 Percentile				0.11	0.27
Exceedences	0	0	0	0	0
Median	551.76	0.90	0.88	0.07	0.25

June 2020	Robert St Cl2 (Analyzer Data)			Robert St Reservoir (Turb Meter Data)	Robert St Chlorinator
	Flow (Volumetric Rate) (m³/d)	Free Cl2 (Max Day) (mg/L)	Free Cl2 (Min Day) (mg/L)	Turbidity (Daily Avg) (NTU)	Turbidity (NTU)
1	630.56	0.9	0.87	0.06	
2	591.4	0.9	0.89	0.06	
3	560.95	0.89	0.89	0.06	
4	602.57	0.9	0.89	0.05	0.07
5	616.49	0.91	0.91	0.05	
6	592.53	0.91	0.9	0.05	
7	653.61	0.92	0.91	0.05	
8	725.47	0.92	0.91	0.05	
9	618.17	0.91	0.9	0.05	
10	523.93	0.9	0.9	0.05	
11	525.86	0.9	0.88	0.05	0.18
12	506.96	0.88	0.88	0.05	
13	502.67	0.89	0.89	0.05	
14	543.54	0.9	0.88	0.05	
15	540.07	0.91	0.89	0.05	0.16
16	532.64	0.91	0.9	0.05	
17	571.97	0.96	0.91	0.05	
18	580.01	0.97	0.93	0.05	
19	550.17	0.97	0.93	0.05	
20	531.71	0.96	0.94	0.05	
21	569.27	0.95	0.94	0.05	
22	601.91	0.95	0.93	0.05	
23	593.38	0.94	0.92	0.04	0.10
24	612.89	0.91	0.9	0.05	
25	666.21	0.9	0.89	0.05	
26	659.84	0.9	0.88	0.05	
27	628.29	0.91	0.89	0.05	
28	686.15	0.92	0.9	0.05	
29	749.17	0.92	0.9	0.05	
30	723.31	0.93	0.92	0.05	

Average	599.72	0.92	0.90	0.05	0.13
Minimum	502.67	0.88	0.87	0.04	0.07
Maximum	749.17	0.97	0.94	0.06	0.18
Count	30	30	30	30	4
Total	17,991.70				
95 Percentile				0.06	0.18
Exceedences	0	0	0	0	0
Median	592.96	0.91	0.90	0.05	0.13

July 2020	Robert St Cl2 (Analyzer Data)			Robert St Reservoir (Turb Meter Data)	Robert St Chlorinator
	Flow (Volumetric Rate) (m³/d)	Free Cl2 (Max Day) (mg/L)	Free Cl2 (Min Day) (mg/L)	Turbidity (Daily Avg) (NTU)	Turbidity (NTU)
1	688.4	0.93	0.91	0.04	
2	669.05	0.92	0.91	0.04	
3	578.89	0.92	0.9	0.04	
4	536.85	0.9	0.89	0.04	
5	612.27	0.89	0.89	0.04	
6	643.77	0.89	0.88	0.05	
7	619.55	0.89	0.88	0.05	0.08
8	620.06	0.89	0.88	0.05	
9	608.7	1	0.89	0.07	
10	624.57	0.95	0.89	0.13	
11	602.09	0.9	0.84	0.19	
12	641.67	0.84	0.82	0.2	
13	723.28	1.1	0.75	0.2	
14	727.08	1.11	0.98	0.2	
15	783.7	0.97	0.78	0.2	
16	778.76	0.71	0.7	0.2	0.47
17	737.13	0.75	0.67	0.2	
18	804.19	0.76	0.72	0.2	
19	891.71	0.8	0.76	0.2	
20	878.46	0.79	0.73	0.2	
21	860.64	0.79	0.76	0.2	
22	880.8	0.8	0.76	0.2	
23	852.19	0.79	0.75	0.2	0.59
24	803.08	0.78	0.75	0.2	
25	833.28	0.81	0.76	0.2	
26	935.97	0.82	0.79	0.2	
27	920.98	0.82	0.77	0.26	0.65
28	865.33	0.81	0.78	0.26	0.65
29	927.38	0.83	0.78	0.26	
30	941.92	0.83	0.81	0.27	
31	890.28	0.83	0.79	0.27	

Average	757.48	0.87	0.81	0.16	0.49
Minimum	536.85	0.71	0.67	0.04	0.08
Maximum	941.92	1.11	0.98	0.27	0.65
Count	31	31	31	31	5
Total	23,482.03				
95 Percentile				0.27	0.65
Exceedences	0	0	0	0	3
Median	778.76	0.83	0.79	0.20	0.59

August 2020	Robert St Cl2 (Analyzer Data)			Robert St Reservoir (Turb Meter Data)	Robert St Chlorinator
	Flow (Volumetric Rate) (m³/d)	Free Cl2 (Max Day) (mg/L)	Free Cl2 (Min Day) (mg/L)	Turbidity (Daily Avg) (NTU)	Turbidity (NTU)
1	897.76	0.83	0.8	0.27	
2	925.12	0.85	0.81	0.27	
3	908.72	0.86	0.83	0.27	
4	911.35	0.85	0.81	0.26	
5	879.31	0.85	0.79	0.27	
6	722.55	0.82	0.76	0.27	
7	625.42	0.78	0.75	0.27	
8	622.62	0.79	0.74	0.27	
9	689.54	0.81	0.77	0.27	
10	785.48	0.91	0.8	0.27	0.26
11	778.96	0.95	0.89	0.27	
12	757.37	0.94	0.91	0.27	
13	782.88	0.93	0.91	0.27	
14	819.78	0.93	0.9	0.27	
15	854.75	0.92	0.88	0.27	
16	904.61	0.94	0.87	0.28	
17	886.2	0.93	0.87	0.28	
18	822.46	0.93	0.82	0.29	
19	804.99	0.92	0.88	0.29	
20	714.17	0.88	0.81	0.28	0.58
21	609.5	0.87	0.8	0.27	
22	630.61	0.93	0.86	0.17	
23	677.02	0.89	0.83	0.18	
24	677	0.83	0.78	0.24	0.49
25	669.68	0.78	0.76	0.26	
26	714.95	0.78	0.76	0.26	0.25
27	714.38	0.79	0.76	0.26	
28	676.46	0.82	0.78	0.26	
29	717.96	0.86	0.82	0.26	
30	737.06	0.88	0.83	0.26	
31	666.66	0.89	0.86	0.26	

Average	760.82	0.87	0.82	0.26	0.40
Minimum	609.5	0.78	0.74	0.17	0.25
Maximum	925.12	0.95	0.91	0.29	0.58
Count	31	31	31	31	4
Total	23,585.32				
95 Percentile				0.29	0.58
Exceedences	0	0	0	0	1
Median	737.06	0.87	0.81	0.27	0.38

September 2020	Robert St Cl2 (Analyzer Data)			Robert St Reservoir (Turb Meter Data)	Robert St Chlorinator
	Flow (Volumetric Rate) (m³/d)	Free Cl2 (Max Day) (mg/L)	Free Cl2 (Min Day) (mg/L)	Turbidity (Daily Avg) (NTU)	Turbidity (NTU)
1	662.74	0.93	0.87	0.26	0.36
2	741.95	0.98	0.93	0.27	
3	773.34	0.99	0.92	0.27	
4	769.85	0.99	0.93	0.27	
5	765.06	0.98	0.95	0.26	
6	774.94	0.99	0.96	0.27	
7	787.48	1.01	0.98	0.27	
8	765.81	1	0.96	0.27	
9	772.62	0.97	0.95	0.27	
10	870.27	1	0.93	0.28	
11	822.38	0.95	0.92	0.28	0.27
12	667.73	0.93	0.89	0.28	
13	631.46	0.91	0.88	0.28	
14	618.56	0.9	0.87	0.28	
15	574.29	0.91	0.88	0.28	0.27
16	560.71	1.1	0.92	0.24	
17	568.18	1.18	1.06	0.17	
18	535.44	1.22	1.08	0.16	
19	520.08	1.2	1.11	0.16	
20	549.69	1.13	0.9	0.16	
21	528.8	0.89	0.84	0.17	
22	504.69	0.84	0.81	0.21	0.31
23	512.15	0.86	0.81	0.23	
24	501.78	0.91	0.85	0.17	
25	493.22	0.97	0.92	0.17	
26	505.74	1.06	0.98	0.17	
27	515.56	1.1	1.06	0.17	
28	494.78	1.14	1.07	0.16	
29	473.41	1.15	1.11	0.16	
30	489.43	1.19	1.13	0.17	0.11

Average	625.07	1.01	0.95	0.23	0.26
Minimum	473.41	0.84	0.81	0.16	0.11
Maximum	870.27	1.22	1.13	0.28	0.36
Count	30	30	30	30	5
Total	18,752.14				
95 Percentile				0.28	0.36
Exceedences	0	0	0	0	0
Median	571.24	0.99	0.93	0.25	0.27

October 2020	Robert St Cl2 (Analyzer Data)			Robert St Reservoir (Turb Meter Data)	Robert St Chlorinator
	Flow (Volumetric Rate) (m³/d)	Free Cl2 (Max Day) (mg/L)	Free Cl2 (Min Day) (mg/L)	Turbidity (Daily Avg) (NTU)	Turbidity (NTU)
1	396.88	1.19	0.9	0.16	
2	396.99	0.96	0.91	0.16	
3	410.89	1.02	0.91	0.16	
4	415.09	1.09	0.92	0.16	
5	417.45	1.11	0.93	0.16	
6	417.58	1.14	0.93	0.16	0.10
7	422.82	1.16	0.93	0.16	
8	423.53	1.16	0.93	0.16	
9	424.61	1.13	0.93	0.07	
10	425.01	1.03	0.95	0.06	
11	425.34	1.01	0.95	0.06	
12	426.22	1	0.96	0.08	
13	428.53	3.42	0.96	0.11	
14	430.6	0.96	0.96	0.14	0.13
15	431.06	0.95	0.96	0.13	
16	431.31	0.94	0.97	0.12	
17	437.15	0.93	0.97	0.12	
18	437.21	0.94	0.97	0.11	
19	439.15	0.94	0.98	0.1	
20	439.88	0.98	0.98	0.09	
21	441.28	1.03	0.98	0.08	0.13
22	443.79	1.07	1.01	0.06	
23	445.85	1.09	1.02	0.06	
24	449.17	1.11	1.03	0.05	
25	452.56	1.12	1.04	0.04	
26	456.89	0.99	1.07	0.04	0.12
27	464.85	0.98	1.08	0.04	
28	467.07	0.98	1.09	0.05	
29	471.48	0.99	1.11	0.05	
30	485.63	1	1.13	0.05	
31	502.2	1.01	1.13	0.06	

Average	437.36	1.11	0.99	0.10	0.12
Minimum	396.88	0.93	0.9	0.04	0.10
Maximum	502.2	3.42	1.13	0.16	0.13
Count	31	31	31	31	4
Total	13,558.07				
95 Percentile				0.16	0.13
Exceedences	0	0	0	0	0
Median	431.31	1.01	0.97	0.09	0.13

November 2020	Robert St Cl2 (Analyzer Data)			Robert St Reservoir	Robert St Chlorinator
	Flow (Volumetric Rate) (m³/d)	Free Cl2 (Max Day) (mg/L)	Free Cl2 (Min Day) (mg/L)	(Turb Meter Data) Turbidity (Daily Avg) (NTU)	Turbidity (NTU)
1	458.13	0.99	0.96	0.06	
2	456.09	0.99	0.97	0.06	
3	431.43	0.99	0.97	0.09	
4	424.24	0.99	0.96	0.15	
5	431.04	0.99	0.97	0.16	0.14
6	428.83	0.99	0.97	0.16	
7	436.05	1	0.97	0.16	
8	461.23	1.01	0.88	0.14	
9	449.68	0.89	0.87	0.11	
10	415.9	0.88	0.87	0.09	
11	426.8	0.87	0.85	0.08	
12	430.2	0.85	0.83	0.07	0.20
13	412.41	0.83	0.81	0.07	
14	419.21	0.82	0.8	0.07	
15	452.17	0.81	0.8	0.07	
16	494.17	0.87	0.81	0.07	0.29
17	507.2	0.91	0.86	0.08	
18	509.72	0.94	0.91	0.09	
19	586.02	1.02	0.95	0.1	
20	708.03	1.03	1.01	0.09	
21	641.27	1.02	0.99	0.08	
22	547.67	1.02	1	0.07	
23	792.13	1.04	0.93	0.07	0.07
24	908.73	1.03	0.96	0.09	0.16
25	812.95	1.1	1.06	0.12	
26	739.37	1.12	1.11	0.11	
27	613.1	1.14	1.13	0.1	
28	482.58	1.15	1.14	0.09	
29	437.13	1.19	1.16	0.09	
30	530.06	1.19	1.17	0.09	

Average	528.12	0.99	0.96	0.10	0.17
Minimum	412.41	0.81	0.8	0.06	0.07
Maximum	908.73	1.19	1.17	0.16	0.29
Count	30	30	30	30	5
Total	15,843.54				
95 Percentile				0.16	0.29
Exceedences	0	0	0	0	0
Median	459.68	0.99	0.96	0.09	0.16

December 2020	Robert St Cl2 (Analyzer Data)			Robert St Reservoir (Turb Meter Data)	Robert St Chlorinator
	Flow (Volumetric Rate) (m³/d)	Free Cl2 (Max Day) (mg/L)	Free Cl2 (Min Day) (mg/L)	Turbidity (Daily Avg) (NTU)	Turbidity (NTU)
1	512.43	1.18	1.14	0.1	0.11
2	415.64	1.14	1.12	0.1	
3	406.02	1.13	1.11	0.1	
4	405.73	1.11	1.09	0.1	
5	414.69	1.09	1.08	0.1	
6	439.64	1.08	1.06	0.09	
7	426.43	1.07	1.05	0.08	
8	396.87	1.05	1.03	0.08	0.31
9	387.88	1.06	1.03	0.12	
10	277.03	1.42	1	1.33	
11	268.95	1.12	1.09	0.16	
12	380.95	1.11	1.09	0.16	
13	424.45	1.11	1.09	0.14	
14	424.4	1.1	1.06	0.12	
15	388.9	1.06	1.02	0.11	0.47
16	382.06	1.02	1	0.1	
17	404.99	1	0.95	0.09	
18	419.54	0.94	0.92	0.08	
19	432.19	0.93	0.91	0.08	
20	438.62	0.94	0.91	0.08	
21	429.92	0.94	0.91	0.09	
22	421	0.96	0.95	0.13	
23	425.51	0.97	0.95	0.15	0.20
24	435.34	0.97	0.95	0.15	
25	433.8	0.96	0.94	0.16	
26	421.84	0.96	0.93	0.17	
27	432.49	1	0.96	0.17	
28	439.46	1.01	0.99	0.17	
29	432.74	1	0.95	0.17	
30	426.9	0.97	0.94	0.17	0.20
31	427.32	0.96	0.94	0.17	

Average	412.06	1.04	1.01	0.16	0.26
Minimum	268.95	0.93	0.91	0.08	0.11
Maximum	512.43	1.42	1.14	1.33	0.47
Count	31	31	31	31	5
Total	12,773.73				
95 Percentile				0.63	0.47
Exceedences	0	0	0	1	0
Median	424.40	1.02	1.00	0.12	0.20

* indicates Geometric Mean
** indicates Intraday Average

Report Name: E.Coli and Total Coliforms

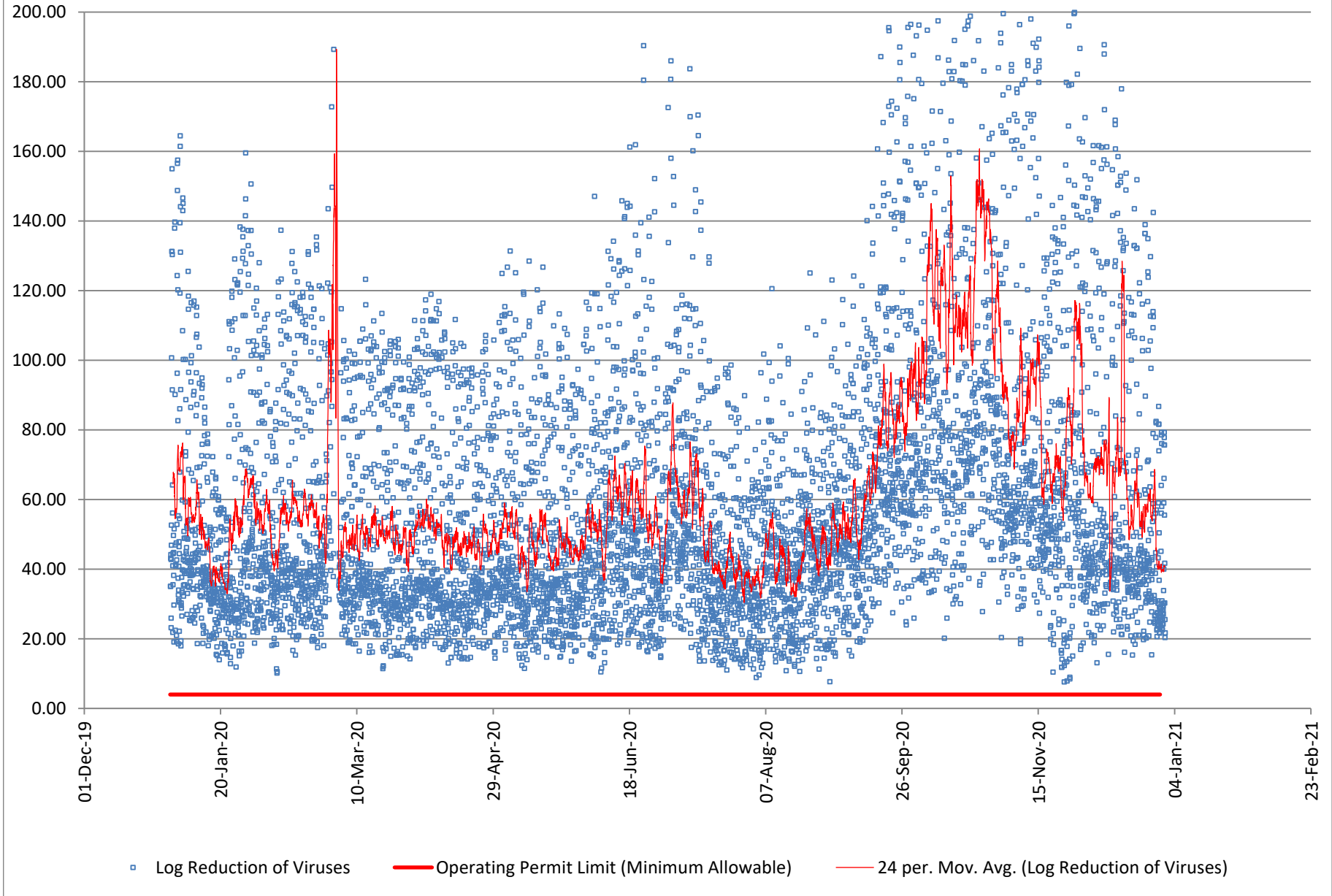
Water System	Facility	Sampling Point	Collection Date	Escherichia coli / E. coli (Count)	Total Coliforms (count)
				Escherichia coli / E. coli (counts)	Total Coliforms (counts)
				Laboratory Report counts/100ml	Laboratory Report counts/100ml
Crofton Drinking Water	Distribution System Sampling Sites	Crofton Auto Service	01/06/2020	0	0
Crofton Drinking Water	Distribution System Sampling Sites	Crofton Auto Service	02/04/2020	0	0
Crofton Drinking Water	Distribution System Sampling Sites	Crofton Auto Service	03/02/2020	0	0
Crofton Drinking Water	Distribution System Sampling Sites	Crofton Auto Service	04/06/2020	0	0
Crofton Drinking Water	Distribution System Sampling Sites	Crofton Auto Service	05/04/2020	0	0
Crofton Drinking Water	Distribution System Sampling Sites	Crofton Auto Service	06/01/2020	0	0
Crofton Drinking Water	Distribution System Sampling Sites	Crofton Auto Service	07/07/2020	0	0
Crofton Drinking Water	Distribution System Sampling Sites	Crofton Auto Service	08/04/2020	0	0
Crofton Drinking Water	Distribution System Sampling Sites	Crofton Auto Service	09/08/2020	0	0
Crofton Drinking Water	Distribution System Sampling Sites	Crofton Auto Service	10/05/2020	0	0
Crofton Drinking Water	Distribution System Sampling Sites	Crofton Auto Service	11/02/2020	0	0
Crofton Drinking Water	Distribution System Sampling Sites	Crofton Auto Service	11/30/2020	0	0
Crofton Drinking Water	Water Treatment Facilities	Robert St Pump Station	01/27/2020	0	0
Crofton Drinking Water	Water Treatment Facilities	Robert St Pump Station	02/18/2020	0	0
Crofton Drinking Water	Water Treatment Facilities	Robert St Pump Station	03/23/2020	0	0
Crofton Drinking Water	Water Treatment Facilities	Robert St Pump Station	04/28/2020	0	0
Crofton Drinking Water	Water Treatment Facilities	Robert St Pump Station	05/25/2020	0	0
Crofton Drinking Water	Water Treatment Facilities	Robert St Pump Station	06/23/2020	0	0
Crofton Drinking Water	Water Treatment Facilities	Robert St Pump Station	07/27/2020	0	0
Crofton Drinking Water	Water Treatment Facilities	Robert St Pump Station	09/28/2020	0	0
Crofton Drinking Water	Water Treatment Facilities	Robert St Pump Station	10/26/2020	0	0
Crofton Drinking Water	Distribution System Sampling Sites	1414 Tatlo	01/20/2020	0	0
Crofton Drinking Water	Distribution System Sampling Sites	1414 Tatlo	02/24/2020	0	0
Crofton Drinking Water	Distribution System Sampling Sites	1414 Tatlo	03/16/2020	0	0
Crofton Drinking Water	Distribution System Sampling Sites	1414 Tatlo	04/20/2020	0	0
Crofton Drinking Water	Distribution System Sampling Sites	1414 Tatlo	05/19/2020	0	0
Crofton Drinking Water	Distribution System Sampling Sites	1414 Tatlo	06/15/2020	0	0
Crofton Drinking Water	Distribution System Sampling Sites	1414 Tatlo	07/21/2020	0	0
Crofton Drinking Water	Distribution System Sampling Sites	1414 Tatlo	08/17/2020	0	0
Crofton Drinking Water	Distribution System Sampling Sites	1414 Tatlo	09/22/2020	0	0
Crofton Drinking Water	Distribution System Sampling Sites	1414 Tatlo	10/19/2020	0	0
Crofton Drinking Water	Distribution System Sampling Sites	1414 Tatlo	11/16/2020	0	0
Crofton Drinking Water	Distribution System Sampling Sites	1414 Tatlo	12/07/2020	0	0
Crofton Drinking Water	Distribution System Sampling Sites	Crofton Treatment Plant	01/13/2020	0	0
Crofton Drinking Water	Distribution System Sampling Sites	Crofton Treatment Plant	02/10/2020	0	0
Crofton Drinking Water	Distribution System Sampling Sites	Crofton Treatment Plant	03/09/2020	0	0
Crofton Drinking Water	Distribution System Sampling Sites	Crofton Treatment Plant	04/15/2020	0	0
Crofton Drinking Water	Distribution System Sampling Sites	Crofton Treatment Plant	05/11/2020	0	0
Crofton Drinking Water	Distribution System Sampling Sites	Crofton Treatment Plant	06/08/2020	0	0
Crofton Drinking Water	Distribution System Sampling Sites	Crofton Treatment Plant	07/13/2020	0	0
Crofton Drinking Water	Distribution System Sampling Sites	Crofton Treatment Plant	08/10/2020	0	0
Crofton Drinking Water	Distribution System Sampling Sites	Crofton Treatment Plant	09/14/2020	0	0
Crofton Drinking Water	Distribution System Sampling Sites	Crofton Treatment Plant	10/13/2020	0	0
Crofton Drinking Water	Distribution System Sampling Sites	Crofton Treatment Plant	11/09/2020	0	0
Crofton Drinking Water	Distribution System Sampling Sites	Crofton Treatment Plant	12/07/2020	0	0
Crofton Drinking Water	Distribution System Sampling Sites	Camp Qwanoes	01/06/2020	0	0
Crofton Drinking Water	Distribution System Sampling Sites	Camp Qwanoes	02/04/2020	0	0
Crofton Drinking Water	Distribution System Sampling Sites	Camp Qwanoes	03/02/2020	0	0
Crofton Drinking Water	Distribution System Sampling Sites	Camp Qwanoes	04/06/2020	0	0
Crofton Drinking Water	Distribution System Sampling Sites	Camp Qwanoes	05/04/2020	0	0
Crofton Drinking Water	Distribution System Sampling Sites	Camp Qwanoes	06/01/2020	0	0
Crofton Drinking Water	Distribution System Sampling Sites	Camp Qwanoes	07/07/2020	0	0
Crofton Drinking Water	Distribution System Sampling Sites	Camp Qwanoes	08/04/2020	0	0
Crofton Drinking Water	Distribution System Sampling Sites	Camp Qwanoes	09/08/2020	0	0
Crofton Drinking Water	Distribution System Sampling Sites	Camp Qwanoes	10/05/2020	0	0
Crofton Drinking Water	Distribution System Sampling Sites	Camp Qwanoes	11/02/2020	0	0

Crofton Drinking Water	Distribution System Sampling Sites	Camp Qwanoes	11/30/2020	0	0
Crofton Drinking Water	Water Treatment Facilities	Crofton Reservoir #1	01/06/2020	0	0
Crofton Drinking Water	Water Treatment Facilities	Crofton Reservoir #1	02/04/2020	0	0
Crofton Drinking Water	Water Treatment Facilities	Crofton Reservoir #1	03/02/2020	0	0
Crofton Drinking Water	Water Treatment Facilities	Crofton Reservoir #1	04/06/2020	0	0
Crofton Drinking Water	Water Treatment Facilities	Crofton Reservoir #1	05/04/2020	0	0
Crofton Drinking Water	Water Treatment Facilities	Crofton Reservoir #1	06/01/2020	0	0
Crofton Drinking Water	Water Treatment Facilities	Crofton Reservoir #1	07/07/2020	0	0
Crofton Drinking Water	Water Treatment Facilities	Crofton Reservoir #1	08/04/2020	0	0
Crofton Drinking Water	Water Treatment Facilities	Crofton Reservoir #1	09/08/2020	0	0
Crofton Drinking Water	Water Treatment Facilities	Crofton Reservoir #1	10/05/2020	0	0
Crofton Drinking Water	Water Treatment Facilities	Crofton Reservoir #1	11/02/2020	0	0
Crofton Drinking Water	Water Treatment Facilities	Crofton Reservoir #1	11/30/2020	0	0
Crofton Drinking Water	Water Treatment Facilities	Crofton Reservoir #2	01/20/2020	0	0
Crofton Drinking Water	Water Treatment Facilities	Crofton Reservoir #2	03/16/2020	0	0
Crofton Drinking Water	Water Treatment Facilities	Crofton Reservoir #2	04/20/2020	0	0
Crofton Drinking Water	Water Treatment Facilities	Crofton Reservoir #2	05/19/2020	0	0
Crofton Drinking Water	Water Treatment Facilities	Crofton Reservoir #2	06/15/2020	0	0
Crofton Drinking Water	Water Treatment Facilities	Crofton Reservoir #2	07/21/2020	0	0
Crofton Drinking Water	Water Treatment Facilities	Crofton Reservoir #2	08/17/2020	0	0
Crofton Drinking Water	Water Treatment Facilities	Crofton Reservoir #2	09/22/2020	0	0
Crofton Drinking Water	Water Treatment Facilities	Crofton Reservoir #2	10/19/2020	0	0
Crofton Drinking Water	Water Treatment Facilities	Crofton Reservoir #2	11/16/2020	0	0
Crofton Drinking Water	Water Treatment Facilities	Crofton Reservoir #2	12/07/2020	0	0

* indicates Geometric Mean

** indicates Intraday Average

Crofton Water Quality - Log Reduction of Viruses



1,1,1-Trichloroethane(Lab Data Transfer)		Sampling Point ID	Measurement Name	Criteria
01/27/2020 11:30	< 0.0010 mg/L	6-3-SR	1,1,1-Trichloroethane	<=0.2 MCL
08/04/2020 11:40	< 0.0010 mg/L	6-3-SR	1,1,1-Trichloroethane	<=0.2 MCL
# samples:	2	min:	< 0.0010 mg/L	
# detects:	0	max:	< 0.0010 mg/L	
# non-detects:	2	avg:	n/a (based on 0 numerical results)	
# of Exceedences:	0			

1,1,2,2-Tetrachloroethane(Lab Data Transfer)		Sampling Point ID	Measurement Name	Criteria
01/27/2020 11:30	< 0.5 ug/L	6-3-SR	1,1,2,2-Tetrachloroethane	
08/04/2020 11:40	< 0.5 ug/L	6-3-SR	1,1,2,2-Tetrachloroethane	
# samples:	2	min:	< 0.5 ug/L	
# detects:	0	max:	< 0.5 ug/L	
# non-detects:	2	avg:	n/a (based on 0 numerical results)	
# of Exceedences:	0			

1,1,2-Trichloroethane(Lab Data Transfer)		Sampling Point ID	Measurement Name	Criteria
01/27/2020 11:30	< 0.0010 mg/L	6-3-SR	1,1,2-Trichloroethane	<=0.005 MCL
08/04/2020 11:40	< 0.0010 mg/L	6-3-SR	1,1,2-Trichloroethane	<=0.005 MCL
# samples:	2	min:	< 0.0010 mg/L	
# detects:	0	max:	< 0.0010 mg/L	
# non-detects:	2	avg:	n/a (based on 0 numerical results)	
# of Exceedences:	0			

1,1-Dichloroethane(Lab Data Transfer)		Sampling Point ID	Measurement Name	Criteria
01/27/2020 11:30	< 1.0 ug/L	6-3-SR	1,1-Dichloroethane	
08/04/2020 11:40	< 1.0 ug/L	6-3-SR	1,1-Dichloroethane	
# samples:	2	min:	< 1.0 ug/L	



# detects:	0	max:	< 1.0 ug/L
# non-detects:	2	avg:	n/a (based on 0 numerical results)
# of Exceedences:	0		

1,1-Dichloroethylene(Lab Data Transfer)		Sampling Point ID	Measurement Name	Criteria	
01/27/2020 11:30	< 0.0010 mg/L	6-3-SR	1,1-Dichloroethylene	<=0.007	MCL
08/04/2020 11:40	< 0.0010 mg/L	6-3-SR	1,1-Dichloroethylene	<=0.007	MCL

# samples:	2	min:	< 0.0010 mg/L
# detects:	0	max:	< 0.0010 mg/L
# non-detects:	2	avg:	n/a (based on 0 numerical results)
# of Exceedences:	0		

1,2-Dichlorobenzene(Lab Data Transfer)		Sampling Point ID	Measurement Name	Criteria	
01/27/2020 11:30	< 0.0005 mg/L	6-3-SR	1,2-Dichlorobenzene	<=0.6	MCL
08/04/2020 11:40	< 0.0005 mg/L	6-3-SR	1,2-Dichlorobenzene	<=0.6	MCL

# samples:	2	min:	< 0.0005 mg/L
# detects:	0	max:	< 0.0005 mg/L
# non-detects:	2	avg:	n/a (based on 0 numerical results)
# of Exceedences:	0		

1,2-Dichloroethene(Lab Data Transfer)		Sampling Point ID	Measurement Name	Criteria	
01/27/2020 11:30	< 1.0 ug/L	6-3-SR	1,2-Dichloroethene		
08/04/2020 11:40	< 1.0 ug/L	6-3-SR	1,2-Dichloroethene		

# samples:	2	min:	< 1.0 ug/L
# detects:	0	max:	< 1.0 ug/L
# non-detects:	2	avg:	n/a (based on 0 numerical results)
# of Exceedences:	0		

1,2-Dichloropropane(Lab Data Transfer)		Sampling Point ID	Measurement Name	Criteria	
01/27/2020 11:30	< 0.0010 mg/L	6-3-SR	1,2-Dichloropropane	<=0.005	MCL
08/04/2020 11:40	< 0.0010 mg/L	6-3-SR	1,2-Dichloropropane	<=0.005	MCL

# samples:	2	min:	< 0.0010 mg/L
# detects:	0	max:	< 0.0010 mg/L
# non-detects:	2	avg:	n/a (based on 0 numerical results)

of Exceedences: 0

1,3-Dichlorobenzene(Lab Data Transfer)		Sampling Point ID	Measurement Name	Criteria
01/27/2020 11:30	< 1.0 ug/L	6-3-SR	1,3-Dichlorobenzene	
08/04/2020 11:40	< 1.0 ug/L	6-3-SR	1,3-Dichlorobenzene	
# samples:	2	min:	< 1.0 ug/L	
# detects:	0	max:	< 1.0 ug/L	
# non-detects:	2	avg:	n/a (based on 0 numerical results)	
# of Exceedences:	0			

1,3-Dichloropropene(Lab Data Transfer)		Sampling Point ID	Measurement Name	Criteria
01/27/2020 11:30	< 1.0 ug/L	6-3-SR	1,3-Dichloropropene	
08/04/2020 11:40	< 1.0 ug/L	6-3-SR	1,3-Dichloropropene	
# samples:	2	min:	< 1.0 ug/L	
# detects:	0	max:	< 1.0 ug/L	
# non-detects:	2	avg:	n/a (based on 0 numerical results)	
# of Exceedences:	0			

1,4-Dichlorobenzene(Lab Data Transfer)		Sampling Point ID	Measurement Name	Criteria
01/27/2020 11:30	< 0.0010 mg/L	6-3-SR	1,4-Dichlorobenzene	<=0.075 MCL
08/04/2020 11:40	< 0.0010 mg/L	6-3-SR	1,4-Dichlorobenzene	<=0.075 MCL
# samples:	2	min:	< 0.0010 mg/L	
# detects:	0	max:	< 0.0010 mg/L	
# non-detects:	2	avg:	n/a (based on 0 numerical results)	
# of Exceedences:	0			

1-Methylnaphthalene(Lab Data Transfer)		Sampling Point ID	Measurement Name	Criteria
01/27/2020 11:30	< 0.100 ug/L	6-3-SR	1-Methylnaphthalene	
08/04/2020 11:40	< 0.100 ug/L	6-3-SR	1-Methylnaphthalene	
# samples:	2	min:	< 0.100 ug/L	
# detects:	0	max:	< 0.100 ug/L	
# non-detects:	2	avg:	n/a (based on 0 numerical results)	
# of Exceedences:	0			



2,3,4,6 + 2,3,5,6-Tetrachlorophenol(Lab Data Transfer)		Sampling Point ID	Measurement Name	Criteria
01/27/2020 11:30	< 0.50 ug/L	6-3-SR	2,3,4,6 + 2,3,5,6-Tetrachlorophenol	
08/04/2020 11:40	< 0.50 ug/L	6-3-SR	2,3,4,6 + 2,3,5,6-Tetrachlorophenol	
# samples:	2	min:	< 0.50 ug/L	
# detects:	0	max:	< 0.50 ug/L	
# non-detects:	2	avg:	n/a (based on 0 numerical results)	
# of Exceedences:	0			

2,3,4,6-Tetrachlorophenol(Lab Data Transfer)		Sampling Point ID	Measurement Name	Criteria
01/27/2020 11:30	< 0.00050 mg/L	6-3-SR	2,3,4,6-Tetrachlorophenol	<=0.001 AO (MAC is 0.1 mg/L)
08/04/2020 11:40	< 0.00050 mg/L	6-3-SR	2,3,4,6-Tetrachlorophenol	<=0.001 AO (MAC is 0.1 mg/L)
# samples:	2	min:	< 0.00050 mg/L	
# detects:	0	max:	< 0.00050 mg/L	
# non-detects:	2	avg:	n/a (based on 0 numerical results)	
# of Exceedences:	0			

2,3,4-Trichlorophenol(Lab Data Transfer)		Sampling Point ID	Measurement Name	Criteria
01/27/2020 11:30	< 0.50 ug/L	6-3-SR	2,3,4-Trichlorophenol	
08/04/2020 11:40	< 0.50 ug/L	6-3-SR	2,3,4-Trichlorophenol	
# samples:	2	min:	< 0.50 ug/L	
# detects:	0	max:	< 0.50 ug/L	
# non-detects:	2	avg:	n/a (based on 0 numerical results)	
# of Exceedences:	0			

2,3,5-Trichlorophenol(Lab Data Transfer)		Sampling Point ID	Measurement Name	Criteria
01/27/2020 11:30	< 0.50 ug/L	6-3-SR	2,3,5-Trichlorophenol	
08/04/2020 11:40	< 0.50 ug/L	6-3-SR	2,3,5-Trichlorophenol	
# samples:	2	min:	< 0.50 ug/L	
# detects:	0	max:	< 0.50 ug/L	



# non-detects:	2	avg:	n/a (based on 0 numerical results)
# of Exceedences:	0		

2,3,6-Trichlorophenol(Lab Data Transfer)		Sampling Point ID	Measurement Name Criteria
01/27/2020 11:30	< 0.50 ug/L	6-3-SR	2,3,6-Trichlorophenol
08/04/2020 11:40	< 0.50 ug/L	6-3-SR	2,3,6-Trichlorophenol

# samples:	2	min:	< 0.50 ug/L
# detects:	0	max:	< 0.50 ug/L
# non-detects:	2	avg:	n/a (based on 0 numerical results)
# of Exceedences:	0		

2,3-Dichlorophenol(Lab Data Transfer)		Sampling Point ID	Measurement Name Criteria
01/27/2020 11:30	< 0.20 ug/L	6-3-SR	2,3-Dichlorophenol
08/04/2020 11:40	< 0.20 ug/L	6-3-SR	2,3-Dichlorophenol

# samples:	2	min:	< 0.20 ug/L
# detects:	0	max:	< 0.20 ug/L
# non-detects:	2	avg:	n/a (based on 0 numerical results)
# of Exceedences:	0		

2,4 + 2,5-Dichlorophenol(Lab Data Transfer)		Sampling Point ID	Measurement Name Criteria
01/27/2020 11:30	< 0.20 ug/L	6-3-SR	2,4 + 2,5-Dichlorophenol
08/04/2020 11:40	< 0.20 ug/L	6-3-SR	2,4 + 2,5-Dichlorophenol

# samples:	2	min:	< 0.20 ug/L
# detects:	0	max:	< 0.20 ug/L
# non-detects:	2	avg:	n/a (based on 0 numerical results)
# of Exceedences:	0		

2,4,5-Trichlorophenol(Lab Data Transfer)		Sampling Point ID	Measurement Name Criteria
01/27/2020 11:30	< 0.50 ug/L	6-3-SR	2,4,5-Trichlorophenol
08/04/2020 11:40	< 0.50 ug/L	6-3-SR	2,4,5-Trichlorophenol

# samples:	2	min:	< 0.50 ug/L
# detects:	0	max:	< 0.50 ug/L

# non-detects:	2	avg:	n/a (based on 0 numerical results)
# of Exceedences:	0		

2,4,5-Trichlorophenoxyacetic acid / 2,4,5-T(Lab Data Transfer)		Sampling Point ID	Measurement Name	Criteria
01/27/2020 11:30	< 0.10 ug/L	6-3-SR	2,4,5-Trichlorophenoxyacetic acid / 2,4,5-T	
08/04/2020 11:40	< 0.10 ug/L	6-3-SR	2,4,5-Trichlorophenoxyacetic acid / 2,4,5-T	

# samples:	2	min:	< 0.10 ug/L
# detects:	0	max:	< 0.10 ug/L
# non-detects:	2	avg:	n/a (based on 0 numerical results)
# of Exceedences:	0		

2,4,6-Trichlorophenol(Lab Data Transfer)		Sampling Point ID	Measurement Name	Criteria
01/27/2020 11:30	< 0.00050 mg/L	6-3-SR	2,4,6-Trichlorophenol	<=0.002 AO (MAC is 0.005 mg/L)
08/04/2020 11:40	< 0.00050 mg/L	6-3-SR	2,4,6-Trichlorophenol	<=0.002 AO (MAC is 0.005 mg/L)

# samples:	2	min:	< 0.00050 mg/L
# detects:	0	max:	< 0.00050 mg/L
# non-detects:	2	avg:	n/a (based on 0 numerical results)
# of Exceedences:	0		

2,4-Dichlorophenoxyacetic acid / 2,4-D(Lab Data Transfer)		Sampling Point ID	Measurement Name	Criteria
01/27/2020 11:30	< 0.00010 mg/L	6-3-SR	2,4-Dichlorophenoxyacetic acid / 2,4-D	<=0.07 MCL
08/04/2020 11:40	< 0.00010 mg/L	6-3-SR	2,4-Dichlorophenoxyacetic acid / 2,4-D	<=0.07 MCL

# samples:	2	min:	< 0.00010 mg/L
# detects:	0	max:	< 0.00010 mg/L
# non-detects:	2	avg:	n/a (based on 0 numerical results)
# of Exceedences:	0		



2,6-Dichlorophenol(Lab Data Transfer)		Sampling Point ID	Measurement Name	Criteria
01/27/2020 11:30	< 0.20 ug/L	6-3-SR	2,6-Dichlorophenol	
08/04/2020 11:40	< 0.20 ug/L	6-3-SR	2,6-Dichlorophenol	
# samples:	2	min:	< 0.20 ug/L	
# detects:	0	max:	< 0.20 ug/L	
# non-detects:	2	avg:	n/a (based on 0 numerical results)	
# of Exceedences:	0			

2-Chloronaphthalene(Lab Data Transfer)		Sampling Point ID	Measurement Name	Criteria
01/27/2020 11:30	< 0.100 ug/L	6-3-SR	2-Chloronaphthalene	
08/04/2020 11:40	< 0.100 ug/L	6-3-SR	2-Chloronaphthalene	
# samples:	2	min:	< 0.100 ug/L	
# detects:	0	max:	< 0.100 ug/L	
# non-detects:	2	avg:	n/a (based on 0 numerical results)	
# of Exceedences:	0			

2-Chlorophenol(Lab Data Transfer)		Sampling Point ID	Measurement Name	Criteria
01/27/2020 11:30	< 0.10 ug/L	6-3-SR	2-Chlorophenol	
08/04/2020 11:40	< 0.10 ug/L	6-3-SR	2-Chlorophenol	
# samples:	2	min:	< 0.10 ug/L	
# detects:	0	max:	< 0.10 ug/L	
# non-detects:	2	avg:	n/a (based on 0 numerical results)	
# of Exceedences:	0			

2-methyl-4-chlorophenoxyacetic acid / MCPA(Lab Data Transfer)		Sampling Point ID	Measurement Name	Criteria
01/27/2020 11:30	< 0.20 ug/L	6-3-SR	2-methyl-4-chlorophe noxyacetic acid / MCPA	
08/04/2020 11:40	< 0.20 ug/L	6-3-SR	2-methyl-4-chlorophe noxyacetic acid / MCPA	
# samples:	2	min:	< 0.20 ug/L	
# detects:	0	max:	< 0.20 ug/L	
# non-detects:	2	avg:	n/a (based on 0 numerical results)	
# of Exceedences:	0			



2-Methylnaphthalene(Lab Data Transfer)		Sampling Point ID	Measurement Name	Criteria
01/27/2020 11:30	< 0.100 ug/L	6-3-SR	2-Methylnaphthalene	
08/04/2020 11:40	< 0.100 ug/L	6-3-SR	2-Methylnaphthalene	
# samples:	2	min:	< 0.100 ug/L	
# detects:	0	max:	< 0.100 ug/L	
# non-detects:	2	avg:	n/a (based on 0 numerical results)	
# of Exceedences:	0			

3 and 4-Chlorophenol (Lab Data Transfer)		Sampling Point ID	Measurement Name	Criteria
01/27/2020 11:30	< 0.10 ug/L	6-3-SR	3 and 4-Chlorophenol	
08/04/2020 11:40	< 0.10 ug/L	6-3-SR	3 and 4-Chlorophenol	
# samples:	2	min:	< 0.10 ug/L	
# detects:	0	max:	< 0.10 ug/L	
# non-detects:	2	avg:	n/a (based on 0 numerical results)	
# of Exceedences:	0			

3,4,5-Trichlorophenol(Lab Data Transfer)		Sampling Point ID	Measurement Name	Criteria
01/27/2020 11:30	< 0.50 ug/L	6-3-SR	3,4,5-Trichlorophenol	
08/04/2020 11:40	< 0.50 ug/L	6-3-SR	3,4,5-Trichlorophenol	
# samples:	2	min:	< 0.50 ug/L	
# detects:	0	max:	< 0.50 ug/L	
# non-detects:	2	avg:	n/a (based on 0 numerical results)	
# of Exceedences:	0			

3,4-Dichlorophenol(Lab Data Transfer)		Sampling Point ID	Measurement Name	Criteria
01/27/2020 11:30	< 0.20 ug/L	6-3-SR	3,4-Dichlorophenol	
08/04/2020 11:40	< 0.20 ug/L	6-3-SR	3,4-Dichlorophenol	
# samples:	2	min:	< 0.20 ug/L	
# detects:	0	max:	< 0.20 ug/L	
# non-detects:	2	avg:	n/a (based on 0 numerical results)	
# of Exceedences:	0			

3,5-Dichlorophenol(Lab Data Transfer)		Sampling Point ID	Measurement Name	Criteria
01/27/2020 11:30	< 0.20 ug/L	6-3-SR	3,5-Dichlorophenol	
08/04/2020 11:40	< 0.40 ug/L	6-3-SR	3,5-Dichlorophenol	
# samples:	2	min:	< 0.20 ug/L	
# detects:	0	max:	< 0.40 ug/L	
# non-detects:	2	avg:	n/a (based on 0 numerical results)	
# of Exceedences:	0			

4-Chloro-3-methylphenol (Parachlorometacresol)(Lab Data Transfer)		Sampling Point ID	Measurement Name	Criteria
01/27/2020 11:30	< 0.50 ug/L	6-3-SR	4-Chloro-3-methylphenol (Parachlorometacresol)	
08/04/2020 11:40	< 0.50 ug/L	6-3-SR	4-Chloro-3-methylphenol (Parachlorometacresol)	
# samples:	2	min:	< 0.50 ug/L	
# detects:	0	max:	< 0.50 ug/L	
# non-detects:	2	avg:	n/a (based on 0 numerical results)	
# of Exceedences:	0			

Acenaphthene(Lab Data Transfer)		Sampling Point ID	Measurement Name	Criteria
01/27/2020 11:30	< 0.050 ug/L	6-3-SR	Acenaphthene	
08/04/2020 11:40	< 0.050 ug/L	6-3-SR	Acenaphthene	
# samples:	2	min:	< 0.050 ug/L	
# detects:	0	max:	< 0.050 ug/L	
# non-detects:	2	avg:	n/a (based on 0 numerical results)	
# of Exceedences:	0			

Acenaphthylene(Lab Data Transfer)		Sampling Point ID	Measurement Name	Criteria
01/27/2020 11:30	< 0.200 ug/L	6-3-SR	Acenaphthylene	
08/04/2020 11:40	< 0.200 ug/L	6-3-SR	Acenaphthylene	
# samples:	2	min:	< 0.200 ug/L	
# detects:	0	max:	< 0.200 ug/L	

# non-detects:	2	avg:	n/a (based on 0 numerical results)
# of Exceedences:	0		

Acridine(Lab Data Transfer)		Sampling Point ID	Measurement Name	Criteria
01/27/2020 11:30	< 0.050 ug/L	6-3-SR	Acridine	
08/04/2020 11:40	< 0.050 ug/L	6-3-SR	Acridine	

# samples:	2	min:	< 0.050 ug/L
# detects:	0	max:	< 0.050 ug/L
# non-detects:	2	avg:	n/a (based on 0 numerical results)
# of Exceedences:	0		

Alachlor(Lab Data Transfer)		Sampling Point ID	Measurement Name	Criteria
08/04/2020 11:40	< 0.000100 mg/L	6-3-SR	Alachlor	<=0.002 MCL

# samples:	1	min:	< 0.000100 mg/L
# detects:	0	max:	< 0.000100 mg/L
# non-detects:	1	avg:	n/a (based on 0 numerical results)
# of Exceedences:	0		

Aldrin(Lab Data Transfer)		Sampling Point ID	Measurement Name	Criteria
08/04/2020 11:40	< 0.006 ug/L	6-3-SR	Aldrin	

# samples:	1	min:	< 0.006 ug/L
# detects:	0	max:	< 0.006 ug/L
# non-detects:	1	avg:	n/a (based on 0 numerical results)
# of Exceedences:	0		

alpha-BHC(Lab Data Transfer)		Sampling Point ID	Measurement Name	Criteria
08/04/2020 11:40	< 0.010 ug/L	6-3-SR	alpha-BHC	

# samples:	1	min:	< 0.010 ug/L
# detects:	0	max:	< 0.010 ug/L
# non-detects:	1	avg:	n/a (based on 0 numerical results)
# of Exceedences:	0		

Aluminum (total)(Lab Data Transfer)		Sampling Point ID	Measurement Name	Criteria
01/27/2020 11:30	< 0.0050 mg/L	6-3-SR	Aluminum (total)	<=0.2 Secondary Standard
# samples:	1	min:	< 0.0050 mg/L	
# detects:	0	max:	< 0.0050 mg/L	
# non-detects:	1	avg:	n/a (based on 0 numerical results)	
# of Exceedences:	0			

Anthracene(Lab Data Transfer)		Sampling Point ID	Measurement Name	Criteria
01/27/2020 11:30	< 0.010 ug/L	6-3-SR	Anthracene	
08/04/2020 11:40	< 0.010 ug/L	6-3-SR	Anthracene	
# samples:	2	min:	< 0.010 ug/L	
# detects:	0	max:	< 0.010 ug/L	
# non-detects:	2	avg:	n/a (based on 0 numerical results)	
# of Exceedences:	0			

Antimony (total)(Lab Data Transfer)		Sampling Point ID	Measurement Name	Criteria
01/27/2020 11:30	< 0.00020 mg/L	6-3-SR	Antimony (total)	<=0.006 MCL
# samples:	1	min:	< 0.00020 mg/L	
# detects:	0	max:	< 0.00020 mg/L	
# non-detects:	1	avg:	n/a (based on 0 numerical results)	
# of Exceedences:	0			

Aroclor 1016(Lab Data Transfer)		Sampling Point ID	Measurement Name	Criteria
01/27/2020 11:30	< 0.050 ug/L	6-3-SR	Aroclor 1016	
08/04/2020 11:40	< 0.050 ug/L	6-3-SR	Aroclor 1016	
# samples:	2	min:	< 0.050 ug/L	
# detects:	0	max:	< 0.050 ug/L	
# non-detects:	2	avg:	n/a (based on 0 numerical results)	
# of Exceedences:	0			

Aroclor 1221(Lab Data Transfer)		Sampling Point ID	Measurement Name	Criteria
01/27/2020 11:30	< 0.050 ug/L	6-3-SR	Aroclor 1221	
08/04/2020 11:40	< 0.050 ug/L	6-3-SR	Aroclor 1221	

# samples:	2	min:	< 0.050 ug/L
# detects:	0	max:	< 0.050 ug/L
# non-detects:	2	avg:	n/a (based on 0 numerical results)
# of Exceedences:	0		

Aroclor 1232(Lab Data Transfer)		Sampling Point ID	Measurement Name Criteria
01/27/2020 11:30	< 0.050 ug/L	6-3-SR	Aroclor 1232
08/04/2020 11:40	< 0.050 ug/L	6-3-SR	Aroclor 1232

# samples:	2	min:	< 0.050 ug/L
# detects:	0	max:	< 0.050 ug/L
# non-detects:	2	avg:	n/a (based on 0 numerical results)
# of Exceedences:	0		

Aroclor 1242(Lab Data Transfer)		Sampling Point ID	Measurement Name Criteria
01/27/2020 11:30	< 0.050 ug/L	6-3-SR	Aroclor 1242
08/04/2020 11:40	< 0.050 ug/L	6-3-SR	Aroclor 1242

# samples:	2	min:	< 0.050 ug/L
# detects:	0	max:	< 0.050 ug/L
# non-detects:	2	avg:	n/a (based on 0 numerical results)
# of Exceedences:	0		

Aroclor 1248(Lab Data Transfer)		Sampling Point ID	Measurement Name Criteria
01/27/2020 11:30	< 0.050 ug/L	6-3-SR	Aroclor 1248
08/04/2020 11:40	< 0.050 ug/L	6-3-SR	Aroclor 1248

# samples:	2	min:	< 0.050 ug/L
# detects:	0	max:	< 0.050 ug/L
# non-detects:	2	avg:	n/a (based on 0 numerical results)
# of Exceedences:	0		

Aroclor 1254(Lab Data Transfer)		Sampling Point ID	Measurement Name Criteria
01/27/2020 11:30	< 0.050 ug/L	6-3-SR	Aroclor 1254
08/04/2020 11:40	< 0.050 ug/L	6-3-SR	Aroclor 1254

# samples:	2	min:	< 0.050 ug/L
# detects:	0	max:	< 0.050 ug/L

non-detects: 2 **avg:** n/a (based on 0 numerical results)
of Exceedences: 0

Aroclor 1260(Lab Data Transfer)		Sampling Point ID	Measurement Name	Criteria
01/27/2020 11:30	< 0.050 ug/L	6-3-SR	Aroclor 1260	
08/04/2020 11:40	< 0.050 ug/L	6-3-SR	Aroclor 1260	

samples: 2 **min:** < 0.050 ug/L
detects: 0 **max:** < 0.050 ug/L
non-detects: 2 **avg:** n/a (based on 0 numerical results)
of Exceedences: 0

Aroclor 1262(Lab Data Transfer)		Sampling Point ID	Measurement Name	Criteria
01/27/2020 11:30	< 0.050 ug/L	6-3-SR	Aroclor 1262	
08/04/2020 11:40	< 0.050 ug/L	6-3-SR	Aroclor 1262	

samples: 2 **min:** < 0.050 ug/L
detects: 0 **max:** < 0.050 ug/L
non-detects: 2 **avg:** n/a (based on 0 numerical results)
of Exceedences: 0

Aroclor 1268(Lab Data Transfer)		Sampling Point ID	Measurement Name	Criteria
01/27/2020 11:30	< 0.050 ug/L	6-3-SR	Aroclor 1268	
08/04/2020 11:40	< 0.050 ug/L	6-3-SR	Aroclor 1268	

samples: 2 **min:** < 0.050 ug/L
detects: 0 **max:** < 0.050 ug/L
non-detects: 2 **avg:** n/a (based on 0 numerical results)
of Exceedences: 0

Arsenic (total)(Lab Data Transfer)		Sampling Point ID	Measurement Name	Criteria
01/27/2020 11:30	< 0.00050 mg/L	6-3-SR	Arsenic (total)	<=0.010 MCL

samples: 1 **min:** < 0.00050 mg/L
detects: 0 **max:** < 0.00050 mg/L
non-detects: 1 **avg:** n/a (based on 0 numerical results)
of Exceedences: 0

Atrazine + N-dealkylated metabolites(Lab Data Transfer)		Sampling Point ID	Measurement Name	Criteria	
08/04/2020 11:40	< 0.000100 mg/L	6-3-SR	Atrazine + N-dealkylated metabolites	<=0.005	MAC
# samples:	1	min:	< 0.000100 mg/L		
# detects:	0	max:	< 0.000100 mg/L		
# non-detects:	1	avg:	n/a (based on 0 numerical results)		
# of Exceedences:	0				

Azinphos-methyl(Lab Data Transfer)		Sampling Point ID	Measurement Name	Criteria	
08/04/2020 11:40	< 0.000200 mg/L	6-3-SR	Azinphos-methyl	<=0.02	MAC
# samples:	1	min:	< 0.000200 mg/L		
# detects:	0	max:	< 0.000200 mg/L		
# non-detects:	1	avg:	n/a (based on 0 numerical results)		
# of Exceedences:	0				

Barium (total)(Lab Data Transfer)		Sampling Point ID	Measurement Name	Criteria	
01/27/2020 11:30	< 0.0050 mg/L	6-3-SR	Barium (total)	<=2	MCL
# samples:	1	min:	< 0.0050 mg/L		
# detects:	0	max:	< 0.0050 mg/L		
# non-detects:	1	avg:	n/a (based on 0 numerical results)		
# of Exceedences:	0				

Benzene(Lab Data Transfer)		Sampling Point ID	Measurement Name	Criteria	
01/27/2020 11:30	< 0.0005 mg/L	6-3-SR	Benzene	<=0.001	MCL
08/04/2020 11:40	< 0.0005 mg/L	6-3-SR	Benzene	<=0.001	MCL
# samples:	2	min:	< 0.0005 mg/L		
# detects:	0	max:	< 0.0005 mg/L		
# non-detects:	2	avg:	n/a (based on 0 numerical results)		
# of Exceedences:	0				

Benzo(a)anthracene(Lab Data Transfer)		Sampling Point ID	Measurement Name	Criteria	
01/27/2020 11:30	< 0.010 ug/L	6-3-SR	Benzo(a)anthracene		
08/04/2020 11:40	< 0.010 ug/L	6-3-SR	Benzo(a)anthracene		



# samples:	2	min:	< 0.010 ug/L
# detects:	0	max:	< 0.010 ug/L
# non-detects:	2	avg:	n/a (based on 0 numerical results)
# of Exceedences:	0		

Benzo(b)fluoranthene(Lab Data Transfer)		Sampling Point ID	Measurement Name Criteria
01/27/2020 11:30	< 0.010 ug/L	6-3-SR	Benzo(b)fluoranthene
08/04/2020 11:40	< 0.010 ug/L	6-3-SR	Benzo(b)fluoranthene

# samples:	2	min:	< 0.010 ug/L
# detects:	0	max:	< 0.010 ug/L
# non-detects:	2	avg:	n/a (based on 0 numerical results)
# of Exceedences:	0		

Benzo(b,j)fluoranthene(Lab Data Transfer)		Sampling Point ID	Measurement Name Criteria
01/27/2020 11:30	< 0.050 ug/L	6-3-SR	Benzo(b,j)fluoranthene
08/04/2020 11:40	< 0.050 ug/L	6-3-SR	Benzo(b,j)fluoranthene

# samples:	2	min:	< 0.050 ug/L
# detects:	0	max:	< 0.050 ug/L
# non-detects:	2	avg:	n/a (based on 0 numerical results)
# of Exceedences:	0		

Benzo(g,h,i)perylene(Lab Data Transfer)		Sampling Point ID	Measurement Name Criteria
01/27/2020 11:30	< 0.050 ug/L	6-3-SR	Benzo(g,h,i)perylene
08/04/2020 11:40	< 0.050 ug/L	6-3-SR	Benzo(g,h,i)perylene

# samples:	2	min:	< 0.050 ug/L
# detects:	0	max:	< 0.050 ug/L
# non-detects:	2	avg:	n/a (based on 0 numerical results)
# of Exceedences:	0		

Benzo(k)fluoranthene(Lab Data Transfer)		Sampling Point ID	Measurement Name	Criteria
01/27/2020 11:30	< 0.050 ug/L	6-3-SR	Benzo(k)fluoranthene	
08/04/2020 11:40	< 0.050 ug/L	6-3-SR	Benzo(k)fluoranthene	
# samples:	2	min:	< 0.050 ug/L	
# detects:	0	max:	< 0.050 ug/L	
# non-detects:	2	avg:	n/a (based on 0 numerical results)	
# of Exceedences:	0			

Beryllium (total)(Lab Data Transfer)		Sampling Point ID	Measurement Name	Criteria
01/27/2020 11:30	< 0.00010 mg/L	6-3-SR	Beryllium (total)	<=0.004 MCL
# samples:	1	min:	< 0.00010 mg/L	
# detects:	0	max:	< 0.00010 mg/L	
# non-detects:	1	avg:	n/a (based on 0 numerical results)	
# of Exceedences:	0			

beta-BHC(Lab Data Transfer)		Sampling Point ID	Measurement Name	Criteria
08/04/2020 11:40	< 0.050 ug/L	6-3-SR	beta-BHC	
# samples:	1	min:	< 0.050 ug/L	
# detects:	0	max:	< 0.050 ug/L	
# non-detects:	1	avg:	n/a (based on 0 numerical results)	
# of Exceedences:	0			

Bismuth (total)(Lab Data Transfer)		Sampling Point ID	Measurement Name	Criteria
01/27/2020 11:30	< 0.10 ug/L	6-3-SR	Bismuth (total)	
# samples:	1	min:	< 0.10 ug/L	
# detects:	0	max:	< 0.10 ug/L	
# non-detects:	1	avg:	n/a (based on 0 numerical results)	
# of Exceedences:	0			

Boron (total)(Lab Data Transfer)		Sampling Point ID	Measurement Name	Criteria
01/27/2020 11:30	0.0118 mg/L	6-3-SR	Boron (total)	<=5 MAC



# samples:	1	min:	0.0118 mg/L
# detects:	1	max:	0.0118 mg/L
# non-detects:	0	avg:	0.0118 mg/L (based on 1 numerical results)
# of Exceedences:	0		

Bromacil(Lab Data Transfer)		Sampling Point ID	Measurement Name	Criteria
08/04/2020 11:40	< 0.100 ug/L	6-3-SR	Bromacil	

# samples:	1	min:	< 0.100 ug/L
# detects:	0	max:	< 0.100 ug/L
# non-detects:	1	avg:	n/a (based on 0 numerical results)
# of Exceedences:	0		

Bromate(Lab Data Transfer)		Sampling Point ID	Measurement Name	Criteria
01/27/2020 11:30	< 0.01 mg/L	6-3-SR	Bromate	<=0.01 MAC

# samples:	1	min:	< 0.01 mg/L
# detects:	0	max:	< 0.01 mg/L
# non-detects:	1	avg:	n/a (based on 0 numerical results)
# of Exceedences:	0		

Bromodichloromethane (dichlorobromomethane)(Lab Data Transfer)		Sampling Point ID	Measurement Name	Criteria
--	--	-------------------	------------------	----------

01/27/2020 11:30	0.0018 mg/L	6-3-SR	Bromodichloromethane (dichlorobromomethane)	<=0.016 MAC
08/04/2020 11:40	0.0018 mg/L	6-3-SR	Bromodichloromethane (dichlorobromomethane)	<=0.016 MAC

# samples:	2	min:	0.0018 mg/L
# detects:	2	max:	0.0018 mg/L
# non-detects:	0	avg:	0.0018 mg/L (based on 2 numerical results)
# of Exceedences:	0		

Bromoform(Lab Data Transfer)		Sampling Point ID	Measurement Name	Criteria
------------------------------	--	-------------------	------------------	----------

01/27/2020 11:30	1.3 ug/L	6-3-SR	Bromoform
08/04/2020 11:40	2.6 ug/L	6-3-SR	Bromoform

# samples:	2	min:	1.3 ug/L
# detects:	2	max:	2.6 ug/L
# non-detects:	0	avg:	2.0 ug/L (based on 2 numerical results)
# of Exceedences:	0		

Bromoxynil(Lab Data Transfer)		Sampling Point ID	Measurement Name	Criteria	
08/04/2020 11:40	< 0.000200 mg/L	6-3-SR	Bromoxynil	<=0.005	MAC

# samples:	1	min:	< 0.000200 mg/L
# detects:	0	max:	< 0.000200 mg/L
# non-detects:	1	avg:	n/a (based on 0 numerical results)
# of Exceedences:	0		

Butachlor(Lab Data Transfer)		Sampling Point ID	Measurement Name	Criteria	
08/04/2020 11:40	< 0.020 ug/L	6-3-SR	Butachlor		

# samples:	1	min:	< 0.020 ug/L
# detects:	0	max:	< 0.020 ug/L
# non-detects:	1	avg:	n/a (based on 0 numerical results)
# of Exceedences:	0		

Cadmium (total)(Lab Data Transfer)		Sampling Point ID	Measurement Name	Criteria	
01/27/2020 11:30	< 0.000010 mg/L	6-3-SR	Cadmium (total)	<=0.005	MCL

# samples:	1	min:	< 0.000010 mg/L
# detects:	0	max:	< 0.000010 mg/L
# non-detects:	1	avg:	n/a (based on 0 numerical results)
# of Exceedences:	0		

Calcium (total)(Lab Data Transfer)		Sampling Point ID	Measurement Name	Criteria	
01/27/2020 11:30	8,960 ug/L	6-3-SR	Calcium (total)		

# samples:	1	min:	8,960 ug/L
# detects:	1	max:	8,960 ug/L
# non-detects:	0	avg:	8,960 ug/L (based on 1 numerical results)
# of Exceedences:	0		

Captan(Lab Data Transfer)		Sampling Point ID	Measurement Name	Criteria
08/04/2020 11:40	< 0.100 ug/L	6-3-SR	Captan	
# samples:	1	min:	< 0.100 ug/L	
# detects:	0	max:	< 0.100 ug/L	
# non-detects:	1	avg:	n/a (based on 0 numerical results)	
# of Exceedences:	0			

Carbon tetrachloride(Lab Data Transfer)		Sampling Point ID	Measurement Name	Criteria
01/27/2020 11:30	< 0.0005 mg/L	6-3-SR	Carbon tetrachloride	<=0.003 MCL
08/04/2020 11:40	< 0.0005 mg/L	6-3-SR	Carbon tetrachloride	<=0.003 MCL
# samples:	2	min:	< 0.0005 mg/L	
# detects:	0	max:	< 0.0005 mg/L	
# non-detects:	2	avg:	n/a (based on 0 numerical results)	
# of Exceedences:	0			

Chlorobenzene(Lab Data Transfer)		Sampling Point ID	Measurement Name	Criteria
01/27/2020 11:30	< 0.0010 mg/L	6-3-SR	Chlorobenzene	<=0.1 MCL
08/04/2020 11:40	< 0.0010 mg/L	6-3-SR	Chlorobenzene	<=0.1 MCL
# samples:	2	min:	< 0.0010 mg/L	
# detects:	0	max:	< 0.0010 mg/L	
# non-detects:	2	avg:	n/a (based on 0 numerical results)	
# of Exceedences:	0			

Chloroethane(Lab Data Transfer)		Sampling Point ID	Measurement Name	Criteria
01/27/2020 11:30	< 2.0 ug/L	6-3-SR	Chloroethane	
08/04/2020 11:40	< 2.0 ug/L	6-3-SR	Chloroethane	
# samples:	2	min:	< 2.0 ug/L	
# detects:	0	max:	< 2.0 ug/L	
# non-detects:	2	avg:	n/a (based on 0 numerical results)	
# of Exceedences:	0			

Chloroform(Lab Data Transfer)		Sampling Point ID	Measurement Name	Criteria
01/27/2020 11:30	2.9 ug/L	6-3-SR	Chloroform	



Chloroform(Lab Data Transfer)		Sampling Point ID	Measurement Name	Criteria
08/04/2020 11:40	2.0 ug/L	6-3-SR	Chloroform	
# samples:	2	min:	2.0 ug/L	
# detects:	2	max:	2.9 ug/L	
# non-detects:	0	avg:	2.5 ug/L (based on 2 numerical results)	
# of Exceedences:	0			

Chlorothalonil(Lab Data Transfer)		Sampling Point ID	Measurement Name	Criteria
08/04/2020 11:40	< 0.050 ug/L	6-3-SR	Chlorothalonil	
# samples:	1	min:	< 0.050 ug/L	
# detects:	0	max:	< 0.050 ug/L	
# non-detects:	1	avg:	n/a (based on 0 numerical results)	
# of Exceedences:	0			

Chlorpyrifos(Lab Data Transfer)		Sampling Point ID	Measurement Name	Criteria
08/04/2020 11:40	< 0.000010 mg/L	6-3-SR	Chlorpyrifos	<=0.09 MAC
# samples:	1	min:	< 0.000010 mg/L	
# detects:	0	max:	< 0.000010 mg/L	
# non-detects:	1	avg:	n/a (based on 0 numerical results)	
# of Exceedences:	0			

Chromium (total)(Lab Data Transfer)		Sampling Point ID	Measurement Name	Criteria
01/27/2020 11:30	< 0.00050 mg/L	6-3-SR	Chromium (total)	<=0.1 MCL
# samples:	1	min:	< 0.00050 mg/L	
# detects:	0	max:	< 0.00050 mg/L	
# non-detects:	1	avg:	n/a (based on 0 numerical results)	
# of Exceedences:	0			

Chrysene(Lab Data Transfer)		Sampling Point ID	Measurement Name	Criteria
01/27/2020 11:30	< 0.050 ug/L	6-3-SR	Chrysene	
08/04/2020 11:40	< 0.050 ug/L	6-3-SR	Chrysene	
# samples:	2	min:	< 0.050 ug/L	
# detects:	0	max:	< 0.050 ug/L	

non-detects: 2 **avg:** n/a (based on 0 numerical results)
of Exceedences: 0

cis-1,2-Dichloroethylene(Lab Data Transfer)		Sampling Point ID	Measurement Name	Criteria	
01/27/2020 11:30	< 0.0010 mg/L	6-3-SR	cis-1,2-Dichloroethylene	<=0.07	MCL
08/04/2020 11:40	< 0.0010 mg/L	6-3-SR	cis-1,2-Dichloroethylene	<=0.07	MCL

samples: 2 **min:** < 0.0010 mg/L
detects: 0 **max:** < 0.0010 mg/L
non-detects: 2 **avg:** n/a (based on 0 numerical results)
of Exceedences: 0

Cobalt (total)(Lab Data Transfer)		Sampling Point ID	Measurement Name	Criteria	
01/27/2020 11:30	< 0.10 ug/L	6-3-SR	Cobalt (total)		

samples: 1 **min:** < 0.10 ug/L
detects: 0 **max:** < 0.10 ug/L
non-detects: 1 **avg:** n/a (based on 0 numerical results)
of Exceedences: 0

Copper (total)(Lab Data Transfer)		Sampling Point ID	Measurement Name	Criteria	
01/27/2020 11:30	0.00131 mg/L	6-3-SR	Copper (total)	<=1	Secondary Standard

samples: 1 **min:** 0.00131 mg/L
detects: 1 **max:** 0.00131 mg/L
non-detects: 0 **avg:** 0.00131 mg/L (based on 1 numerical results)
of Exceedences: 0

Cyanazine(Lab Data Transfer)		Sampling Point ID	Measurement Name	Criteria	
08/04/2020 11:40	< 0.100 ug/L	6-3-SR	Cyanazine		

samples: 1 **min:** < 0.100 ug/L
detects: 0 **max:** < 0.100 ug/L
non-detects: 1 **avg:** n/a (based on 0 numerical results)
of Exceedences: 0

Cyanide (total)(Lab Data Transfer)		Sampling Point ID	Measurement Name	Criteria	
01/27/2020 11:30	< 0.0020 mg/L	6-3-SR	Cyanide (total)	<=0.2	MAC for Cyanide (free)
# samples:	1	min:	< 0.0020 mg/L		
# detects:	0	max:	< 0.0020 mg/L		
# non-detects:	1	avg:	n/a (based on 0 numerical results)		
# of Exceedences:	0				

DDT + metabolites(Lab Data Transfer)		Sampling Point ID	Measurement Name	Criteria	
08/04/2020 11:40	< 0.010 ug/L	6-3-SR	DDT + metabolites		
# samples:	1	min:	< 0.010 ug/L		
# detects:	0	max:	< 0.010 ug/L		
# non-detects:	1	avg:	n/a (based on 0 numerical results)		
# of Exceedences:	0				

delta-BHC(Lab Data Transfer)		Sampling Point ID	Measurement Name	Criteria	
08/04/2020 11:40	< 0.050 ug/L	6-3-SR	delta-BHC		
# samples:	1	min:	< 0.050 ug/L		
# detects:	0	max:	< 0.050 ug/L		
# non-detects:	1	avg:	n/a (based on 0 numerical results)		
# of Exceedences:	0				

Deltamethrin(Lab Data Transfer)		Sampling Point ID	Measurement Name	Criteria	
08/04/2020 11:40	< 0.100 ug/L	6-3-SR	Deltamethrin		
# samples:	1	min:	< 0.100 ug/L		
# detects:	0	max:	< 0.100 ug/L		
# non-detects:	1	avg:	n/a (based on 0 numerical results)		
# of Exceedences:	0				

Diazinon(Lab Data Transfer)		Sampling Point ID	Measurement Name	Criteria	
08/04/2020 11:40	< 0.000020 mg/L	6-3-SR	Diazinon	<=0.02	MAC
# samples:	1	min:	< 0.000020 mg/L		
# detects:	0	max:	< 0.000020 mg/L		



# non-detects:	1	avg:	n/a (based on 0 numerical results)
# of Exceedences:	0		

Dibenzo(a,h)anthracene(Lab Data Transfer)		Sampling Point ID	Measurement Name	Criteria
01/27/2020 11:30	< 0.010 ug/L	6-3-SR	Dibenzo(a,h)anthracene	
08/04/2020 11:40	< 0.010 ug/L	6-3-SR	Dibenzo(a,h)anthracene	

# samples:	2	min:	< 0.010 ug/L
# detects:	0	max:	< 0.010 ug/L
# non-detects:	2	avg:	n/a (based on 0 numerical results)
# of Exceedences:	0		

Dibromochloromethane (Chlorodibromomethane)(Lab Data Transfer)		Sampling Point ID	Measurement Name	Criteria
01/27/2020 11:30	1.1 ug/L	6-3-SR	Dibromochloromethane (Chlorodibromomethane)	
08/04/2020 11:40	1.4 ug/L	6-3-SR	Dibromochloromethane (Chlorodibromomethane)	

# samples:	2	min:	1.1 ug/L
# detects:	2	max:	1.4 ug/L
# non-detects:	0	avg:	1.3 ug/L (based on 2 numerical results)
# of Exceedences:	0		

Dibromomethane(Lab Data Transfer)		Sampling Point ID	Measurement Name	Criteria
01/27/2020 11:30	< 1.0 ug/L	6-3-SR	Dibromomethane	
08/04/2020 11:40	< 1.0 ug/L	6-3-SR	Dibromomethane	

# samples:	2	min:	< 1.0 ug/L
# detects:	0	max:	< 1.0 ug/L
# non-detects:	2	avg:	n/a (based on 0 numerical results)
# of Exceedences:	0		

Dicamba(Lab Data Transfer)		Sampling Point ID	Measurement Name	Criteria	
01/27/2020 11:30	< 0.00010 mg/L	6-3-SR	Dicamba	<=0.12	MAC
08/04/2020 11:40	< 0.00010 mg/L	6-3-SR	Dicamba	<=0.12	MAC
# samples:	2	min:	< 0.00010 mg/L		
# detects:	0	max:	< 0.00010 mg/L		
# non-detects:	2	avg:	n/a (based on 0 numerical results)		
# of Exceedences:	0				

Dichloromethane(Lab Data Transfer)		Sampling Point ID	Measurement Name	Criteria	
01/27/2020 11:30	< 0.0030 mg/L	6-3-SR	Dichloromethane	<=0.005	MCL
08/04/2020 11:40	< 0.0030 mg/L	6-3-SR	Dichloromethane	<=0.005	MCL
# samples:	2	min:	< 0.0030 mg/L		
# detects:	0	max:	< 0.0030 mg/L		
# non-detects:	2	avg:	n/a (based on 0 numerical results)		
# of Exceedences:	0				

Dichlorvos(Lab Data Transfer)		Sampling Point ID	Measurement Name	Criteria	
08/04/2020 11:40	< 0.100 ug/L	6-3-SR	Dichlorvos		
# samples:	1	min:	< 0.100 ug/L		
# detects:	0	max:	< 0.100 ug/L		
# non-detects:	1	avg:	n/a (based on 0 numerical results)		
# of Exceedences:	0				

Diclofop-methyl(Lab Data Transfer)		Sampling Point ID	Measurement Name	Criteria	
08/04/2020 11:40	< 0.000100 mg/L	6-3-SR	Diclofop-methyl	<=0.009	MAC
# samples:	1	min:	< 0.000100 mg/L		
# detects:	0	max:	< 0.000100 mg/L		
# non-detects:	1	avg:	n/a (based on 0 numerical results)		
# of Exceedences:	0				

Dieldrin(Lab Data Transfer)		Sampling Point ID	Measurement Name	Criteria	
08/04/2020 11:40	< 0.010 ug/L	6-3-SR	Dieldrin		
# samples:	1	min:	< 0.010 ug/L		



# detects:	0	max:	< 0.010 ug/L
# non-detects:	1	avg:	n/a (based on 0 numerical results)
# of Exceedences:	0		

Dimethoate(Lab Data Transfer)		Sampling Point ID	Measurement Name	Criteria	
08/04/2020 11:40	< 0.000200 mg/L	6-3-SR	Dimethoate	<=0.02	MAC

# samples:	1	min:	< 0.000200 mg/L
# detects:	0	max:	< 0.000200 mg/L
# non-detects:	1	avg:	n/a (based on 0 numerical results)
# of Exceedences:	0		

Dinoseb(Lab Data Transfer)		Sampling Point ID	Measurement Name	Criteria	
01/27/2020 11:30	< 0.00010 mg/L	6-3-SR	Dinoseb	<=0.007	MCL
08/04/2020 11:40	< 0.00010 mg/L	6-3-SR	Dinoseb	<=0.007	MCL

# samples:	2	min:	< 0.00010 mg/L
# detects:	0	max:	< 0.00010 mg/L
# non-detects:	2	avg:	n/a (based on 0 numerical results)
# of Exceedences:	0		

Diquat(Lab Data Transfer)		Sampling Point ID	Measurement Name	Criteria	
01/27/2020 11:30	< 0.0100 mg/L	6-3-SR	Diquat	<=0.02	MCL

# samples:	1	min:	< 0.0100 mg/L
# detects:	0	max:	< 0.0100 mg/L
# non-detects:	1	avg:	n/a (based on 0 numerical results)
# of Exceedences:	0		

Disulfoton(Lab Data Transfer)		Sampling Point ID	Measurement Name	Criteria	
08/04/2020 11:40	< 0.100 ug/L	6-3-SR	Disulfoton		

# samples:	1	min:	< 0.100 ug/L
# detects:	0	max:	< 0.100 ug/L
# non-detects:	1	avg:	n/a (based on 0 numerical results)
# of Exceedences:	0		

Diuron(Lab Data Transfer)		Sampling Point ID	Measurement Name	Criteria
08/04/2020 11:40	< 0.000200 mg/L	6-3-SR	Diuron	<=0.15 MAC
# samples:	1	min:	< 0.000200 mg/L	
# detects:	0	max:	< 0.000200 mg/L	
# non-detects:	1	avg:	n/a (based on 0 numerical results)	
# of Exceedences:	0			

Endosulfan (total)(Lab Data Transfer)		Sampling Point ID	Measurement Name	Criteria
08/04/2020 11:40	< 0.010 ug/L	6-3-SR	Endosulfan (total)	
# samples:	1	min:	< 0.010 ug/L	
# detects:	0	max:	< 0.010 ug/L	
# non-detects:	1	avg:	n/a (based on 0 numerical results)	
# of Exceedences:	0			

Endosulfan sulfate(Lab Data Transfer)		Sampling Point ID	Measurement Name	Criteria
08/04/2020 11:40	< 0.050 ug/L	6-3-SR	Endosulfan sulfate	
# samples:	1	min:	< 0.050 ug/L	
# detects:	0	max:	< 0.050 ug/L	
# non-detects:	1	avg:	n/a (based on 0 numerical results)	
# of Exceedences:	0			

Endrin aldehyde(Lab Data Transfer)		Sampling Point ID	Measurement Name	Criteria
08/04/2020 11:40	< 0.020 ug/L	6-3-SR	Endrin aldehyde	
# samples:	1	min:	< 0.020 ug/L	
# detects:	0	max:	< 0.020 ug/L	
# non-detects:	1	avg:	n/a (based on 0 numerical results)	
# of Exceedences:	0			

Endrin ketone(Lab Data Transfer)		Sampling Point ID	Measurement Name	Criteria
08/04/2020 11:40	< 0.020 ug/L	6-3-SR	Endrin ketone	
# samples:	1	min:	< 0.020 ug/L	
# detects:	0	max:	< 0.020 ug/L	
# non-detects:	1	avg:	n/a (based on 0 numerical results)	

of Exceedences: 0

Endrin(Lab Data Transfer)		Sampling Point ID	Measurement Name	Criteria	
08/04/2020 11:40	< 0.000020 mg/L	6-3-SR	Endrin	<=0.002	MCL

samples: 1 min: < 0.000020 mg/L
 # detects: 0 max: < 0.000020 mg/L
 # non-detects: 1 avg: n/a (based on 0 numerical results)
 # of Exceedences: 0

Ethylbenzene(Lab Data Transfer)		Sampling Point ID	Measurement Name	Criteria	
01/27/2020 11:30	< 0.0010 mg/L	6-3-SR	Ethylbenzene	<=0.7	MCL
08/04/2020 11:40	< 0.0010 mg/L	6-3-SR	Ethylbenzene	<=0.7	MCL

samples: 2 min: < 0.0010 mg/L
 # detects: 0 max: < 0.0010 mg/L
 # non-detects: 2 avg: n/a (based on 0 numerical results)
 # of Exceedences: 0

Ethylene dibromide / EDB(Lab Data Transfer)		Sampling Point ID	Measurement Name	Criteria	
01/27/2020 11:30	< 0.0003 mg/L	6-3-SR	Ethylene dibromide / EDB	<=0.00002	MCL
08/04/2020 11:40	< 0.0003 mg/L	6-3-SR	Ethylene dibromide / EDB	<=0.00002	MCL

samples: 2 min: < 0.0003 mg/L
 # detects: 0 max: < 0.0003 mg/L
 # non-detects: 2 avg: n/a (based on 0 numerical results)
 # of Exceedences: 0

Fenclorphos(Lab Data Transfer)		Sampling Point ID	Measurement Name	Criteria	
08/04/2020 11:40	< 0.100 ug/L	6-3-SR	Fenclorphos		

samples: 1 min: < 0.100 ug/L
 # detects: 0 max: < 0.100 ug/L
 # non-detects: 1 avg: n/a (based on 0 numerical results)
 # of Exceedences: 0



Fluoranthene(Lab Data Transfer)		Sampling Point ID	Measurement Name	Criteria
01/27/2020 11:30	< 0.030 ug/L	6-3-SR	Fluoranthene	
08/04/2020 11:40	< 0.030 ug/L	6-3-SR	Fluoranthene	
# samples:	2	min:	< 0.030 ug/L	
# detects:	0	max:	< 0.030 ug/L	
# non-detects:	2	avg:	n/a (based on 0 numerical results)	
# of Exceedences:	0			

Fluorene(Lab Data Transfer)		Sampling Point ID	Measurement Name	Criteria
01/27/2020 11:30	< 0.050 ug/L	6-3-SR	Fluorene	
08/04/2020 11:40	< 0.050 ug/L	6-3-SR	Fluorene	
# samples:	2	min:	< 0.050 ug/L	
# detects:	0	max:	< 0.050 ug/L	
# non-detects:	2	avg:	n/a (based on 0 numerical results)	
# of Exceedences:	0			

Fluoride(Lab Data Transfer)		Sampling Point ID	Measurement Name	Criteria
01/27/2020 11:30	< 0.1 mg/L	6-3-SR	Fluoride	<=4.0 MCL
# samples:	1	min:	< 0.1 mg/L	
# detects:	0	max:	< 0.1 mg/L	
# non-detects:	1	avg:	n/a (based on 0 numerical results)	
# of Exceedences:	0			

Glyphosate(Lab Data Transfer)		Sampling Point ID	Measurement Name	Criteria
01/27/2020 11:30	< 0.05 mg/L	6-3-SR	Glyphosate	<=0.7 MCL
# samples:	1	min:	< 0.05 mg/L	
# detects:	0	max:	< 0.05 mg/L	
# non-detects:	1	avg:	n/a (based on 0 numerical results)	
# of Exceedences:	0			

Hardness (total, as CaCO3)(Lab Data Transfer)		Sampling Point ID	Measurement Name	Criteria
01/27/2020 11:30	25.9 mg/L	6-3-SR	Hardness (total, as CaCO3)	



# samples:	1	min:	25.9 mg/L
# detects:	1	max:	25.9 mg/L
# non-detects:	0	avg:	25.9 mg/L (based on 1 numerical results)
# of Exceedences:	0		

Heptachlor epoxide(Lab Data Transfer)		Sampling Point ID	Measurement Name	Criteria
08/04/2020 11:40	< 0.000010 mg/L	6-3-SR	Heptachlor epoxide	<=0.0002 MCL

# samples:	1	min:	< 0.000010 mg/L
# detects:	0	max:	< 0.000010 mg/L
# non-detects:	1	avg:	n/a (based on 0 numerical results)
# of Exceedences:	0		

Heptachlor(Lab Data Transfer)		Sampling Point ID	Measurement Name	Criteria
08/04/2020 11:40	< 0.000010 mg/L	6-3-SR	Heptachlor	<=0.0004 MCL

# samples:	1	min:	< 0.000010 mg/L
# detects:	0	max:	< 0.000010 mg/L
# non-detects:	1	avg:	n/a (based on 0 numerical results)
# of Exceedences:	0		

Indeno(1,2,3-c,d)pyrene(Lab Data Transfer)		Sampling Point ID	Measurement Name	Criteria
01/27/2020 11:30	< 0.050 ug/L	6-3-SR	Indeno(1,2,3-c,d)pyrene	
08/04/2020 11:40	< 0.050 ug/L	6-3-SR	Indeno(1,2,3-c,d)pyrene	

# samples:	2	min:	< 0.050 ug/L
# detects:	0	max:	< 0.050 ug/L
# non-detects:	2	avg:	n/a (based on 0 numerical results)
# of Exceedences:	0		

Iron(Lab Data Transfer)		Sampling Point ID	Measurement Name	Criteria
01/27/2020 11:30	0.043 mg/L	6-3-SR	Iron	<=0.3 Secondary Standard

# samples:	1	min:	0.043 mg/L
# detects:	1	max:	0.043 mg/L
# non-detects:	0	avg:	0.043 mg/L (based on 1 numerical results)

of Exceedences: 0

Lead (total)(Lab Data Transfer)		Sampling Point ID	Measurement Name	Criteria
01/27/2020 11:30	< 0.00020 mg/L	6-3-SR	Lead (total)	<=0.015 MCL
# samples:	1	min:	< 0.00020 mg/L	
# detects:	0	max:	< 0.00020 mg/L	
# non-detects:	1	avg:	n/a (based on 0 numerical results)	
# of Exceedences:	0			

Lindane(Lab Data Transfer)		Sampling Point ID	Measurement Name	Criteria
08/04/2020 11:40	< 0.000050 mg/L	6-3-SR	Lindane	<=0.0002 MCL
# samples:	1	min:	< 0.000050 mg/L	
# detects:	0	max:	< 0.000050 mg/L	
# non-detects:	1	avg:	n/a (based on 0 numerical results)	
# of Exceedences:	0			

Linuron(Lab Data Transfer)		Sampling Point ID	Measurement Name	Criteria
08/04/2020 11:40	< 0.050 ug/L	6-3-SR	Linuron	
# samples:	1	min:	< 0.050 ug/L	
# detects:	0	max:	< 0.050 ug/L	
# non-detects:	1	avg:	n/a (based on 0 numerical results)	
# of Exceedences:	0			

Lithium (dissolved)(Lab Data Transfer)		Sampling Point ID	Measurement Name	Criteria
01/27/2020 11:30	0.20 ug/L	6-3-SR	Lithium (dissolved)	
# samples:	1	min:	0.20 ug/L	
# detects:	1	max:	0.20 ug/L	
# non-detects:	0	avg:	0.20 ug/L (based on 1 numerical results)	
# of Exceedences:	0			

Magnesium (dissolved)(Lab Data Transfer)		Sampling Point ID	Measurement Name	Criteria
01/27/2020 11:30	845 ug/L	6-3-SR	Magnesium (dissolved)	



# samples:	1	min:	845 ug/L
# detects:	1	max:	845 ug/L
# non-detects:	0	avg:	845 ug/L (based on 1 numerical results)
# of Exceedences:	0		

Malathion(Lab Data Transfer)		Sampling Point ID	Measurement Name	Criteria	
08/04/2020 11:40	< 0.000100 mg/L	6-3-SR	Malathion	<=0.19	MAC

# samples:	1	min:	< 0.000100 mg/L
# detects:	0	max:	< 0.000100 mg/L
# non-detects:	1	avg:	n/a (based on 0 numerical results)
# of Exceedences:	0		

Manganese (total)(Lab Data Transfer)		Sampling Point ID	Measurement Name	Criteria	
01/27/2020 11:30	0.00125 mg/L	6-3-SR	Manganese (total)	<=0.05	Secondary Standard

# samples:	1	min:	0.00125 mg/L
# detects:	1	max:	0.00125 mg/L
# non-detects:	0	avg:	0.00125 mg/L (based on 1 numerical results)
# of Exceedences:	0		

Mercury (total)(Lab Data Transfer)		Sampling Point ID	Measurement Name	Criteria	
01/27/2020 11:30	< 0.000010 mg/L	6-3-SR	Mercury (total)	<=0.002	MCL

# samples:	1	min:	< 0.000010 mg/L
# detects:	0	max:	< 0.000010 mg/L
# non-detects:	1	avg:	n/a (based on 0 numerical results)
# of Exceedences:	0		

Methoxychlor(Lab Data Transfer)		Sampling Point ID	Measurement Name	Criteria	
08/04/2020 11:40	< 0.000050 mg/L	6-3-SR	Methoxychlor	<=0.04	MCL

# samples:	1	min:	< 0.000050 mg/L
# detects:	0	max:	< 0.000050 mg/L
# non-detects:	1	avg:	n/a (based on 0 numerical results)
# of Exceedences:	0		

Methyl parathion(Lab Data Transfer)		Sampling Point ID	Measurement Name	Criteria
08/04/2020 11:40	< 0.100 ug/L	6-3-SR	Methyl parathion	
# samples:	1	min:	< 0.100 ug/L	
# detects:	0	max:	< 0.100 ug/L	
# non-detects:	1	avg:	n/a (based on 0 numerical results)	
# of Exceedences:	0			

Methyl tert-butyl ether / MTBE(Lab Data Transfer)		Sampling Point ID	Measurement Name	Criteria
01/27/2020 11:30	< 1.0 ug/L	6-3-SR	Methyl tert-butyl ether / MTBE	
08/04/2020 11:40	< 1.0 ug/L	6-3-SR	Methyl tert-butyl ether / MTBE	
# samples:	2	min:	< 1.0 ug/L	
# detects:	0	max:	< 1.0 ug/L	
# non-detects:	2	avg:	n/a (based on 0 numerical results)	
# of Exceedences:	0			

Metolachlor(Lab Data Transfer)		Sampling Point ID	Measurement Name	Criteria
08/04/2020 11:40	< 0.000100 mg/L	6-3-SR	Metolachlor	<=0.05 MAC
# samples:	1	min:	< 0.000100 mg/L	
# detects:	0	max:	< 0.000100 mg/L	
# non-detects:	1	avg:	n/a (based on 0 numerical results)	
# of Exceedences:	0			

Metribuzin(Lab Data Transfer)		Sampling Point ID	Measurement Name	Criteria
08/04/2020 11:40	< 0.000200 mg/L	6-3-SR	Metribuzin	<=0.08 MAC
# samples:	1	min:	< 0.000200 mg/L	
# detects:	0	max:	< 0.000200 mg/L	
# non-detects:	1	avg:	n/a (based on 0 numerical results)	
# of Exceedences:	0			

Molybdenum (total)(Lab Data Transfer)		Sampling Point ID	Measurement Name	Criteria
01/27/2020 11:30	< 0.10 ug/L	6-3-SR	Molybdenum (total)	

# samples:	1	min:	< 0.10 ug/L
# detects:	0	max:	< 0.10 ug/L
# non-detects:	1	avg:	n/a (based on 0 numerical results)
# of Exceedences:	0		

Naphthalene(Lab Data Transfer)		Sampling Point ID	Measurement Name	Criteria
01/27/2020 11:30	< 0.200 ug/L	6-3-SR	Naphthalene	
08/04/2020 11:40	< 0.200 ug/L	6-3-SR	Naphthalene	

# samples:	2	min:	< 0.200 ug/L
# detects:	0	max:	< 0.200 ug/L
# non-detects:	2	avg:	n/a (based on 0 numerical results)
# of Exceedences:	0		

Nickel (total)(Lab Data Transfer)		Sampling Point ID	Measurement Name	Criteria
01/27/2020 11:30	< 0.00040 mg/L	6-3-SR	Nickel (total)	<=0.1 MCL

# samples:	1	min:	< 0.00040 mg/L
# detects:	0	max:	< 0.00040 mg/L
# non-detects:	1	avg:	n/a (based on 0 numerical results)
# of Exceedences:	0		

Nitrate (as N)(Lab Data Transfer)		Sampling Point ID	Measurement Name	Criteria
01/27/2020 11:30	0.138 mg/L	6-3-SR	Nitrate (as N)	<=10 MCL

# samples:	1	min:	0.138 mg/L
# detects:	1	max:	0.138 mg/L
# non-detects:	0	avg:	0.138 mg/L (based on 1 numerical results)
# of Exceedences:	0		

Nitrilotriacetic acid / NTA(Lab Data Transfer)		Sampling Point ID	Measurement Name	Criteria
01/27/2020 11:30	< 0.2 mg/L	6-3-SR	Nitrilotriacetic acid / NTA	<=0.4 MAC

# samples:	1	min:	< 0.2 mg/L
# detects:	0	max:	< 0.2 mg/L
# non-detects:	1	avg:	n/a (based on 0 numerical results)
# of Exceedences:	0		

Paraquat(Lab Data Transfer)		Sampling Point ID	Measurement Name	Criteria	
01/27/2020 11:30	< 0.0050 mg/L	6-3-SR	Paraquat	<=0.007	MAC for Paraquat ion. Equivalent to 0.01 mg/L for paraquat as dichloride
# samples:	1	min:	< 0.0050 mg/L		
# detects:	0	max:	< 0.0050 mg/L		
# non-detects:	1	avg:	n/a (based on 0 numerical results)		
# of Exceedences:	0				

Parathion(Lab Data Transfer)		Sampling Point ID	Measurement Name	Criteria	
08/04/2020 11:40	< 0.100 ug/L	6-3-SR	Parathion		
# samples:	1	min:	< 0.100 ug/L		
# detects:	0	max:	< 0.100 ug/L		
# non-detects:	1	avg:	n/a (based on 0 numerical results)		
# of Exceedences:	0				

Pentachloronitrobenzene / PCNB(Lab Data Transfer)		Sampling Point ID	Measurement Name	Criteria	
08/04/2020 11:40	< 0.100 ug/L	6-3-SR	Pentachloronitrobenzene / PCNB		
# samples:	1	min:	< 0.100 ug/L		
# detects:	0	max:	< 0.100 ug/L		
# non-detects:	1	avg:	n/a (based on 0 numerical results)		
# of Exceedences:	0				

Pentachlorophenol / PCP(Lab Data Transfer)		Sampling Point ID	Measurement Name	Criteria	
01/27/2020 11:30	< 0.00050 mg/L	6-3-SR	Pentachlorophenol / PCP	<=0.001	MCL
08/04/2020 11:40	< 0.00050 mg/L	6-3-SR	Pentachlorophenol / PCP	<=0.001	MCL
# samples:	2	min:	< 0.00050 mg/L		
# detects:	0	max:	< 0.00050 mg/L		
# non-detects:	2	avg:	n/a (based on 0 numerical results)		
# of Exceedences:	0				



Permethrin(Lab Data Transfer)		Sampling Point ID	Measurement Name	Criteria
08/04/2020 11:40	< 0.010 ug/L	6-3-SR	Permethrin	
# samples:	1	min:	< 0.010 ug/L	
# detects:	0	max:	< 0.010 ug/L	
# non-detects:	1	avg:	n/a (based on 0 numerical results)	
# of Exceedences:	0			

Phenanthrene(Lab Data Transfer)		Sampling Point ID	Measurement Name	Criteria
01/27/2020 11:30	< 0.100 ug/L	6-3-SR	Phenanthrene	
08/04/2020 11:40	< 0.100 ug/L	6-3-SR	Phenanthrene	
# samples:	2	min:	< 0.100 ug/L	
# detects:	0	max:	< 0.100 ug/L	
# non-detects:	2	avg:	n/a (based on 0 numerical results)	
# of Exceedences:	0			

Phorate(Lab Data Transfer)		Sampling Point ID	Measurement Name	Criteria
08/04/2020 11:40	< 0.000100 mg/L	6-3-SR	Phorate	<=0.002 MAC
# samples:	1	min:	< 0.000100 mg/L	
# detects:	0	max:	< 0.000100 mg/L	
# non-detects:	1	avg:	n/a (based on 0 numerical results)	
# of Exceedences:	0			

Picloram(Lab Data Transfer)		Sampling Point ID	Measurement Name	Criteria
01/27/2020 11:30	< 0.00010 mg/L	6-3-SR	Picloram	<=0.5 MCL
08/04/2020 11:40	< 0.00010 mg/L	6-3-SR	Picloram	<=0.5 MCL
# samples:	2	min:	< 0.00010 mg/L	
# detects:	0	max:	< 0.00010 mg/L	
# non-detects:	2	avg:	n/a (based on 0 numerical results)	
# of Exceedences:	0			

Polychlorinated Biphenyls / PCBs (as arochlor total)(Lab Data Transfer)		Sampling Point ID	Measurement Name	Criteria
01/27/2020 11:30	< 0.050 ug/L	6-3-SR	Polychlorinated Biphenyls / PCBs (as arochlor total)	

Polychlorinated Biphenyls / PCBs (as arochlor total)(Lab Data Transfer) **Sampling Point ID** **Measurement Name Criteria**

08/04/2020 11:40	< 0.050 ug/L	6-3-SR	Polychlorinated Biphenyls / PCBs (as arochlor total)
# samples:	2	min:	< 0.050 ug/L
# detects:	0	max:	< 0.050 ug/L
# non-detects:	2	avg:	n/a (based on 0 numerical results)
# of Exceedences:	0		

Potassium (total)(Lab Data Transfer) **Sampling Point ID** **Measurement Name Criteria**

01/27/2020 11:30	310 ug/L	6-3-SR	Potassium (total)
# samples:	1	min:	310 ug/L
# detects:	1	max:	310 ug/L
# non-detects:	0	avg:	310 ug/L (based on 1 numerical results)
# of Exceedences:	0		

Prometon(Lab Data Transfer) **Sampling Point ID** **Measurement Name Criteria**

08/04/2020 11:40	< 0.300 ug/L	6-3-SR	Prometon
# samples:	1	min:	< 0.300 ug/L
# detects:	0	max:	< 0.300 ug/L
# non-detects:	1	avg:	n/a (based on 0 numerical results)
# of Exceedences:	0		

Prometryn(Lab Data Transfer) **Sampling Point ID** **Measurement Name Criteria**

08/04/2020 11:40	< 0.100 ug/L	6-3-SR	Prometryn
# samples:	1	min:	< 0.100 ug/L
# detects:	0	max:	< 0.100 ug/L
# non-detects:	1	avg:	n/a (based on 0 numerical results)
# of Exceedences:	0		

Pyrene(Lab Data Transfer) **Sampling Point ID** **Measurement Name Criteria**

01/27/2020 11:30	< 0.020 ug/L	6-3-SR	Pyrene
08/04/2020 11:40	< 0.020 ug/L	6-3-SR	Pyrene



# samples:	2	min:	< 0.020 ug/L
# detects:	0	max:	< 0.020 ug/L
# non-detects:	2	avg:	n/a (based on 0 numerical results)
# of Exceedences:	0		

Quinoline(Lab Data Transfer)		Sampling Point ID	Measurement Name	Criteria
01/27/2020 11:30	< 0.050 ug/L	6-3-SR	Quinoline	
08/04/2020 11:40	< 0.050 ug/L	6-3-SR	Quinoline	

# samples:	2	min:	< 0.050 ug/L
# detects:	0	max:	< 0.050 ug/L
# non-detects:	2	avg:	n/a (based on 0 numerical results)
# of Exceedences:	0		

Selenium (total)(Lab Data Transfer)		Sampling Point ID	Measurement Name	Criteria
01/27/2020 11:30	< 0.00050 mg/L	6-3-SR	Selenium (total)	<=0.05 MCL

# samples:	1	min:	< 0.00050 mg/L
# detects:	0	max:	< 0.00050 mg/L
# non-detects:	1	avg:	n/a (based on 0 numerical results)
# of Exceedences:	0		

Silicon (total, as Si)(Lab Data Transfer)		Sampling Point ID	Measurement Name	Criteria
01/27/2020 11:30	3,000 ug/L	6-3-SR	Silicon (total, as Si)	

# samples:	1	min:	3,000 ug/L
# detects:	1	max:	3,000 ug/L
# non-detects:	0	avg:	3,000 ug/L (based on 1 numerical results)
# of Exceedences:	0		

Silver (total)(Lab Data Transfer)		Sampling Point ID	Measurement Name	Criteria
01/27/2020 11:30	< 0.000050 mg/L	6-3-SR	Silver (total)	<=0.1 Secondary Standard

# samples:	1	min:	< 0.000050 mg/L
# detects:	0	max:	< 0.000050 mg/L
# non-detects:	1	avg:	n/a (based on 0 numerical results)
# of Exceedences:	0		

Simazine(Lab Data Transfer)		Sampling Point ID	Measurement Name	Criteria
08/04/2020 11:40	< 0.000200 mg/L	6-3-SR	Simazine	<=0.004 MCL
# samples:	1	min:	< 0.000200 mg/L	
# detects:	0	max:	< 0.000200 mg/L	
# non-detects:	1	avg:	n/a (based on 0 numerical results)	
# of Exceedences:	0			

Sodium (total)(Lab Data Transfer)		Sampling Point ID	Measurement Name	Criteria
01/27/2020 11:30	2.92 mg/L	6-3-SR	Sodium (total)	<=160 MCL
# samples:	1	min:	2.92 mg/L	
# detects:	1	max:	2.92 mg/L	
# non-detects:	0	avg:	2.92 mg/L (based on 1 numerical results)	
# of Exceedences:	0			

Strontium (total)(Lab Data Transfer)		Sampling Point ID	Measurement Name	Criteria
01/27/2020 11:30	28.1 ug/L	6-3-SR	Strontium (total)	
# samples:	1	min:	28.1 ug/L	
# detects:	1	max:	28.1 ug/L	
# non-detects:	0	avg:	28.1 ug/L (based on 1 numerical results)	
# of Exceedences:	0			

Styrene(Lab Data Transfer)		Sampling Point ID	Measurement Name	Criteria
01/27/2020 11:30	< 0.0010 mg/L	6-3-SR	Styrene	<=0.1 MCL
08/04/2020 11:40	< 0.0010 mg/L	6-3-SR	Styrene	<=0.1 MCL
# samples:	2	min:	< 0.0010 mg/L	
# detects:	0	max:	< 0.0010 mg/L	
# non-detects:	2	avg:	n/a (based on 0 numerical results)	
# of Exceedences:	0			

Sulfotep(Lab Data Transfer)		Sampling Point ID	Measurement Name	Criteria
08/04/2020 11:40	< 0.100 ug/L	6-3-SR	Sulfotep	
# samples:	1	min:	< 0.100 ug/L	
# detects:	0	max:	< 0.100 ug/L	

non-detects: 1 **avg:** n/a (based on 0 numerical results)
of Exceedences: 0

Sulfur (total)(Lab Data Transfer)		Sampling Point ID	Measurement Name	Criteria
01/27/2020 11:30	< 3,000 ug/L	6-3-SR	Sulfur (total)	

samples: 1 **min:** < 3,000 ug/L
detects: 0 **max:** < 3,000 ug/L
non-detects: 1 **avg:** n/a (based on 0 numerical results)
of Exceedences: 0

Sulphate(Lab Data Transfer)		Sampling Point ID	Measurement Name	Criteria
01/27/2020 11:30	1.7 mg/L	6-3-SR	Sulphate	<=250 Secondary Standard

samples: 1 **min:** 1.7 mg/L
detects: 1 **max:** 1.7 mg/L
non-detects: 0 **avg:** 1.7 mg/L (based on 1 numerical results)
of Exceedences: 0

Sulphide (total, as S)(Lab Data Transfer)		Sampling Point ID	Measurement Name	Criteria
01/27/2020 11:30	< 20 ug/L	6-3-SR	Sulphide (total, as S)	

samples: 1 **min:** < 20 ug/L
detects: 0 **max:** < 20 ug/L
non-detects: 1 **avg:** n/a (based on 0 numerical results)
of Exceedences: 0

Tebuthiuron(Lab Data Transfer)		Sampling Point ID	Measurement Name	Criteria
08/04/2020 11:40	< 0.200 ug/L	6-3-SR	Tebuthiuron	

samples: 1 **min:** < 0.200 ug/L
detects: 0 **max:** < 0.200 ug/L
non-detects: 1 **avg:** n/a (based on 0 numerical results)
of Exceedences: 0

Temephos(Lab Data Transfer)		Sampling Point ID	Measurement Name	Criteria
08/04/2020 11:40	< 0.500 ug/L	6-3-SR	Temephos	



# samples:	1	min:	< 0.500 ug/L
# detects:	0	max:	< 0.500 ug/L
# non-detects:	1	avg:	n/a (based on 0 numerical results)
# of Exceedences:	0		

Terbufos(Lab Data Transfer)		Sampling Point ID	Measurement Name	Criteria	
08/04/2020 11:40	< 0.000100 mg/L	6-3-SR	Terbufos	<=0.001	MAC

# samples:	1	min:	< 0.000100 mg/L
# detects:	0	max:	< 0.000100 mg/L
# non-detects:	1	avg:	n/a (based on 0 numerical results)
# of Exceedences:	0		

Tetrachloroethylene / PCE(Lab Data Transfer)		Sampling Point ID	Measurement Name	Criteria	
01/27/2020 11:30	< 0.0010 mg/L	6-3-SR	Tetrachloroethylene / PCE	<=0.003	MCL
08/04/2020 11:40	< 0.0010 mg/L	6-3-SR	Tetrachloroethylene / PCE	<=0.003	MCL

# samples:	2	min:	< 0.0010 mg/L
# detects:	0	max:	< 0.0010 mg/L
# non-detects:	2	avg:	n/a (based on 0 numerical results)
# of Exceedences:	0		

Thallium (total)(Lab Data Transfer)		Sampling Point ID	Measurement Name	Criteria	
01/27/2020 11:30	< 0.000020 mg/L	6-3-SR	Thallium (total)	<=0.002	MCL

# samples:	1	min:	< 0.000020 mg/L
# detects:	0	max:	< 0.000020 mg/L
# non-detects:	1	avg:	n/a (based on 0 numerical results)
# of Exceedences:	0		

Tin (total)(Lab Data Transfer)		Sampling Point ID	Measurement Name	Criteria	
01/27/2020 11:30	< 0.20 ug/L	6-3-SR	Tin (total)		

# samples:	1	min:	< 0.20 ug/L
# detects:	0	max:	< 0.20 ug/L
# non-detects:	1	avg:	n/a (based on 0 numerical results)

of Exceedences: 0

Titanium (total)(Lab Data Transfer)		Sampling Point ID	Measurement Name	Criteria
01/27/2020 11:30	< 5.0 ug/L	6-3-SR	Titanium (total)	
# samples:	1	min:	< 5.0 ug/L	
# detects:	0	max:	< 5.0 ug/L	
# non-detects:	1	avg:	n/a (based on 0 numerical results)	
# of Exceedences:	0			

Toluene(Lab Data Transfer)		Sampling Point ID	Measurement Name	Criteria
01/27/2020 11:30	< 0.0010 mg/L	6-3-SR	Toluene	<=1 MCL
08/04/2020 11:40	< 0.0010 mg/L	6-3-SR	Toluene	<=1 MCL
# samples:	2	min:	< 0.0010 mg/L	
# detects:	0	max:	< 0.0010 mg/L	
# non-detects:	2	avg:	n/a (based on 0 numerical results)	
# of Exceedences:	0			

Total Chloramines (as combined chlorine)(Lab Data Transfer)		Sampling Point ID	Measurement Name	Criteria
01/27/2020 11:30	< 0.0400 mg/L	6-3-SR	Total Chloramines (as combined chlorine)	<=3.0 MAC
# samples:	1	min:	< 0.0400 mg/L	
# detects:	0	max:	< 0.0400 mg/L	
# non-detects:	1	avg:	n/a (based on 0 numerical results)	
# of Exceedences:	0			

Total Chlordane(Lab Data Transfer)		Sampling Point ID	Measurement Name	Criteria
08/04/2020 11:40	< 0.000050 mg/L	6-3-SR	Total Chlordane	<=0.002 MCL
# samples:	1	min:	< 0.000050 mg/L	
# detects:	0	max:	< 0.000050 mg/L	
# non-detects:	1	avg:	n/a (based on 0 numerical results)	
# of Exceedences:	0			



Total Trihalomethanes / TTHM(Lab Data Transfer)		Sampling Point ID	Measurement Name	Criteria
01/27/2020 11:30	0.00613 mg/L	6-3-SR	Total Trihalomethanes / TTHM	<=0.100 MAC
# samples:	1	min:	0.00613 mg/L	
# detects:	1	max:	0.00613 mg/L	
# non-detects:	0	avg:	0.00613 mg/L (based on 1 numerical results)	
# of Exceedences:	0			

trans-1,2-Dichloroethylene(Lab Data Transfer)		Sampling Point ID	Measurement Name	Criteria
01/27/2020 11:30	< 0.0010 mg/L	6-3-SR	trans-1,2-Dichloroethylene	<=0.1 MCL
08/04/2020 11:40	< 0.0010 mg/L	6-3-SR	trans-1,2-Dichloroethylene	<=0.1 MCL
# samples:	2	min:	< 0.0010 mg/L	
# detects:	0	max:	< 0.0010 mg/L	
# non-detects:	2	avg:	n/a (based on 0 numerical results)	
# of Exceedences:	0			

Triallate(Lab Data Transfer)		Sampling Point ID	Measurement Name	Criteria
08/04/2020 11:40	< 0.100 ug/L	6-3-SR	Triallate	
# samples:	1	min:	< 0.100 ug/L	
# detects:	0	max:	< 0.100 ug/L	
# non-detects:	1	avg:	n/a (based on 0 numerical results)	
# of Exceedences:	0			

Trichloroethylene / TCE(Lab Data Transfer)		Sampling Point ID	Measurement Name	Criteria
01/27/2020 11:30	< 0.0010 mg/L	6-3-SR	Trichloroethylene / TCE	<=0.003 MCL
08/04/2020 11:40	< 0.0010 mg/L	6-3-SR	Trichloroethylene / TCE	<=0.003 MCL
# samples:	2	min:	< 0.0010 mg/L	
# detects:	0	max:	< 0.0010 mg/L	
# non-detects:	2	avg:	n/a (based on 0 numerical results)	
# of Exceedences:	0			



Trichlorofluoromethane(Lab Data Transfer)		Sampling Point ID	Measurement Name	Criteria
01/27/2020 11:30	< 1.0 ug/L	6-3-SR	Trichlorofluoromethane	
08/04/2020 11:40	< 1.0 ug/L	6-3-SR	Trichlorofluoromethane	
# samples:	2	min:	< 1.0 ug/L	
# detects:	0	max:	< 1.0 ug/L	
# non-detects:	2	avg:	n/a (based on 0 numerical results)	
# of Exceedences:	0			

Trifluralin(Lab Data Transfer)		Sampling Point ID	Measurement Name	Criteria
08/04/2020 11:40	< 0.000200 mg/L	6-3-SR	Trifluralin	<=0.045 MAC
# samples:	1	min:	< 0.000200 mg/L	
# detects:	0	max:	< 0.000200 mg/L	
# non-detects:	1	avg:	n/a (based on 0 numerical results)	
# of Exceedences:	0			

Uranium (total)(Lab Data Transfer)		Sampling Point ID	Measurement Name	Criteria
01/27/2020 11:30	< 0.000020 mg/L	6-3-SR	Uranium (total)	<=0.02 MAC
# samples:	1	min:	< 0.000020 mg/L	
# detects:	0	max:	< 0.000020 mg/L	
# non-detects:	1	avg:	n/a (based on 0 numerical results)	
# of Exceedences:	0			

Vanadium (total)(Lab Data Transfer)		Sampling Point ID	Measurement Name	Criteria
01/27/2020 11:30	1.3 ug/L	6-3-SR	Vanadium (total)	
# samples:	1	min:	1.3 ug/L	
# detects:	1	max:	1.3 ug/L	
# non-detects:	0	avg:	1.3 ug/L (based on 1 numerical results)	
# of Exceedences:	0			

Vinyl chloride(Lab Data Transfer)		Sampling Point ID	Measurement Name	Criteria
01/27/2020 11:30	< 0.0010 mg/L	6-3-SR	Vinyl chloride	<=0.001 MCL
08/04/2020 11:40	< 0.0010 mg/L	6-3-SR	Vinyl chloride	<=0.001 MCL



# samples:	2	min:	< 0.0010 mg/L
# detects:	0	max:	< 0.0010 mg/L
# non-detects:	2	avg:	n/a (based on 0 numerical results)
# of Exceedences:	0		

Xylenes (total)(Lab Data Transfer)		Sampling Point ID	Measurement Name	Criteria	
01/27/2020 11:30	< 0.0020 mg/L	6-3-SR	Xylenes (total)	<=10	MCL
08/04/2020 11:40	< 0.0020 mg/L	6-3-SR	Xylenes (total)	<=10	MCL

# samples:	2	min:	< 0.0020 mg/L
# detects:	0	max:	< 0.0020 mg/L
# non-detects:	2	avg:	n/a (based on 0 numerical results)
# of Exceedences:	0		

Zinc (total)(Lab Data Transfer)		Sampling Point ID	Measurement Name	Criteria	
01/27/2020 11:30	< 0.0040 mg/L	6-3-SR	Zinc (total)	<=5	Secondary Standard

# samples:	1	min:	< 0.0040 mg/L
# detects:	0	max:	< 0.0040 mg/L
# non-detects:	1	avg:	n/a (based on 0 numerical results)
# of Exceedences:	0		

Zirconium (total)(Lab Data Transfer)		Sampling Point ID	Measurement Name	Criteria
01/27/2020 11:30	< 0.10 ug/L	6-3-SR	Zirconium (total)	

# samples:	1	min:	< 0.10 ug/L
# detects:	0	max:	< 0.10 ug/L
# non-detects:	1	avg:	n/a (based on 0 numerical results)
# of Exceedences:	0		

Result Legend:

P=present, A=absent, PR=presumptive, ND=non-detect, OR=over-range, OG=overgrown, Y=yes, N=no,
 TNTC=too numerous to count, NR=no result, NT=not tested, IG=ignore, ER=external report, SC=see comment

< means less than lower detection limit shown
 > means greater than upper detection limit shown
 « means detected & less than number shown
 » means detected & greater than number shown

* Indicates Criteria is exceeded

